



2018 Tire Data Guide

Commercial Vehicle Tires

DELIVERING YOUR LOWEST OVERALL DRIVING COST. One of the largest automotive suppliers and tire manufacturers in the world, Continental develops pioneering technologies to make your fleet safer, more efficient, and more connected. With innovative tire technology and digital fleet solutions, Continental optimizes your tire lifecycle management. Count on Continental to recommend the best tires and solutions for your specific fleet needs.

2018 Tire Data Guide Commercial Vehicle Tires to fit your needs.

As an international partner to the transport and logistics industry, we know the markets as well as we know the roads around the world. And we also know that ultimately, cost effectiveness is what matters.

But no two roads are the same and no two operations are the same. That's why we developed Continental Truck Tires - the ideal solution to deliver your Lowest Overall Driving Cost.

IMPORTANT NOTE:
Product details are subject to change, please visit www.continental-truck.com or contact your local sales representative for the most up to date information.

Table of Contents

If the information you are looking for is not in this data guide, please contact your local sales representative.

Product Overview.....	4-9	Conti Hybrid HD3.....	40	ContiTread™ Retreads.....	68
Application Guide.....	10	Conti Hybrid HD3 - 19.5".....	41	Waste & Refuse Tires.....	70-73
Truck Tire Availability Chart.....	11	Conti Hybrid HT3 - 19.5".....	42	Conti CityService HA3*.....	72
Comparison Chart.....	12	ContiTread™ Retreads.....	43	ContiTread™ Retreads.....	73
EPA SmartWay Information.....	13	Regional Tires.....	44-57	Bus & Coach Tires.....	74-77
ContiTread™ Comparison Chart.....	14	Conti CrossTrac HA3*.....	46	Conti Coach HA3.....	76
ContiLifeCycle™ Process.....	15	HSR2*.....	47	Conti Urban HA3.....	76
Conti 3G Casing Information.....	16	HSR2 Eco Plus.....	48	HSR2 SA.....	77
Digital Tire Monitoring Solutions.....	17	HSR - 19.5".....	48	Winter Tires.....	78-81
TrukFix Road Service Program.....	18	LSR1- 17.5".....	49	HDW2*.....	80
Conti360° Fleet Services.....	19	HDR2*.....	50	Conti Scandinavia HD3.....	80
Long Haul Tires.....	20-35	HDR2 Eco Plus*.....	51	ContiTread™ Retreads.....	81
Conti EcoPlus HS3.....	22	HDR*.....	51	Light Truck Tires.....	82-85
HSL2 Eco Plus.....	23	HDR - 19.5".....	52	Conti LAR 3.....	84
HDL2.....	24	HTR2*.....	52	Medium Truck Load/ Inflation Tables.....	86-89
HDL2 Eco Plus*.....	25	HTR2 - 17.5".....	53	Load Limits at Various Speeds.....	90-91
HDL2 + Eco Plus.....	25	ContiTread™ Retreads.....	54-56	Definitions.....	92
HDL2 DL*.....	26	On/Off Road Tires.....	58-63	Low Aspect Ratio Tires.....	93
HDL2 DL Eco Plus*.....	27	HSC1*.....	60	Safety Warnings.....	94-96
HDL Eco Plus*.....	28	HDC1*.....	60	Service Descriptions.....	97
Conti EcoPlus HT3*.....	29	HDC1 HT*.....	61	International Load Index Numbers.....	98
HTL1*.....	30	HTC1*.....	61	Tread Depth Conversion Table.....	99
Conti Hybrid HT3*.....	31	HTC.....	62		
HTL2 Eco Plus.....	32	ContiTread™ Retreads.....	63		
ContiTread™ Retreads.....	33-35	Off-Road & Severe Service Tires.....	64-69		
Super Regional Tires.....	36-43	HCS*.....	66		
Conti Hybrid HS3.....	38	HDO.....	66		
Conti Hybrid HS3 - 19.5".....	39	Conti Terra HD3 - 19.5".....	67		

*Available in ContiTread™ retread

Steer/All-Position

Steer Position Tires



Conti EcoPlus HS3
Fuel Efficient Long Haul Steer
Fuel Saving | 3G Casing | SmartWay
Long Haul



HSL2 Eco Plus
Heavy Steer Long Haul
Fuel Saving | SmartWay
Long Haul



Conti Hybrid HS3
Hybrid Steer
Mileage | 3G Casing | SmartWay
Super Regional



Conti CrossTrac HA3
Regional All-Position
Mileage | 3G Casing | SmartWay
Regional



HSR2
Heavy Steer Regional
Mileage | SmartWay
Regional



HSR2 Eco Plus
Heavy Steer Regional
Fuel Saving | SmartWay
Regional



HSC1
Heavy Steer Construction
Durability | Stone Ejection System
On/Off Road



HCS
Heavy Construction Steer
Traction | Durability
Off Road - Severe Service



Conti CityService HA3
Waste Transport All-Position
Mileage | Retreadability
Waste & Refuse



Conti Coach HA3
Coach All-Position
Wet Handling | SmartWay
Bus & Coach



Conti Urban HA3
Metro Service All-Position
Durability | Extra Sidewall Protection
Bus & Coach



HSR2 SA
Heavy Steer Regional
Mileage | SmartWay
Bus & Coach



LSR1- 17.5"
Regional All-Position
Mileage
Regional



Conti LAR 3 - 16"
Steel Casing Regional
All-Position
Mileage | All Steel
Light Truck

Drive

Drive Position Tires



HDL2
Heavy Drive Long Haul
Fuel Saving | 3G Casing | SmartWay
Long Haul



HDL2 Eco Plus
Heavy Drive Long Haul
Mileage | SmartWay
Long Haul



HDL2+ Eco Plus
Heavy Drive Long Haul
Mileage | Heavy Loads
Long Haul



HDL2 DL
Heavy Drive Long Haul Deep Lug
Mileage | 3G Casing
Long Haul



HDL2 DL Eco Plus
Heavy Drive Long Haul Deep Lug
Fuel Saving | 3G Casing | SmartWay
Long Haul



HDL Eco Plus
Heavy Drive Long Haul
Fuel Saving | SmartWay
Long Haul



Conti Hybrid HD3
Hybrid Drive
Mileage | 3G Casing | SmartWay
Super Regional



HDR2
Heavy Drive Regional
Mileage | 3G Casing
Regional



HDR2 Eco Plus
Heavy Drive Regional
Fuel Saving | 3G Casing | SmartWay
Regional



HDR
Heavy Drive Regional
Mileage | SmartWay
Regional



HDC1
Heavy Drive Construction
Traction | Stone Ejection System
On/Off Road



HDC1 HT
Heavy Drive Construction High Traction
Traction | 3G Casing
On/Off Road



HDO
Heavy Drive Off-Road
Traction | Durability
Off Road - Severe Service



HDW2
Heavy Drive Winter
Winter Traction | 3G Casing
Winter

Trailer

Trailer Position Tires



Conti Eco Plus HT3
Fuel Efficient Long Haul Trailer
Fuel Saving | 3G Casing | SmartWay
Long Haul



HTL1
Heavy Trailer Long Haul
Mileage | SmartWay
Long Haul



Conti Hybrid HT3
Heavy Trailer Regional
Mileage | Durability | SmartWay
Long Haul



HTL2 Eco Plus
Heavy Trailer Long Haul
Fuel Saving | Mileage
Long Haul



HTR2
Heavy Trailer Regional
Mileage | Durability
Regional



HTC1
Heavy Trailer Construction
Mileage | Durability | Traction
On/Off Road



HTC
Heavy Trailer Construction
Mileage | Durability | Traction
On/Off Road



HTR2 - 17.5"
Heavy Trailer Regional
Mileage | Durability
Regional

19.5" Tires

19.5" Tire



Conti Hybrid HS3 - 19.5"
Hybrid Steer
Mileage | Pocket Sipes
Super Regional



HSR - 19.5"
Regional Steer
Mileage | On/Off Road
Regional



Conti Hybrid HD3 - 19.5"
Hybrid Drive
Mileage
Super Regional



HDR - 19.5"
Regional Drive
Mileage | On/Off Road
Regional



Conti Terra HD3 - 19.5"
Off-Road Drive
Traction | Durability
Off Road - Severe Service



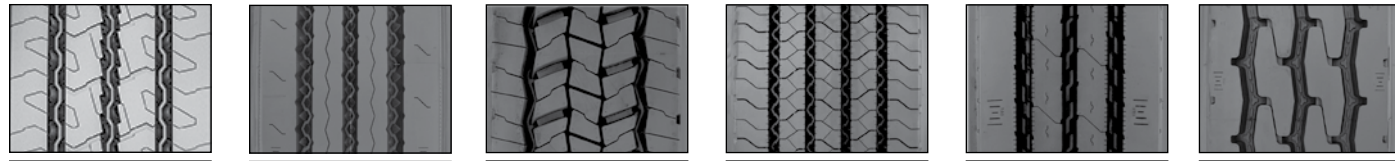
Conti Scandinavia HD3 - 19.5"
Severe Weather Drive
Winter Traction
Winter



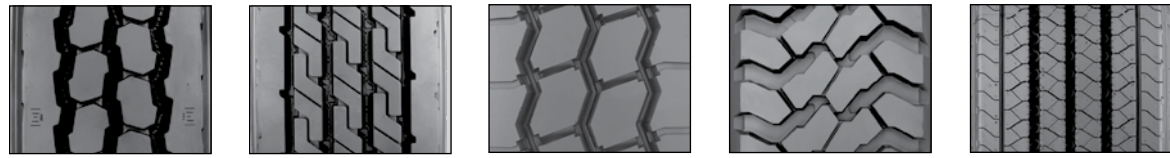
Conti Hybrid HT3 - 19.5"
Hybrid Trailer
Mileage
Super Regional

ContiTread™

All-Position Treads

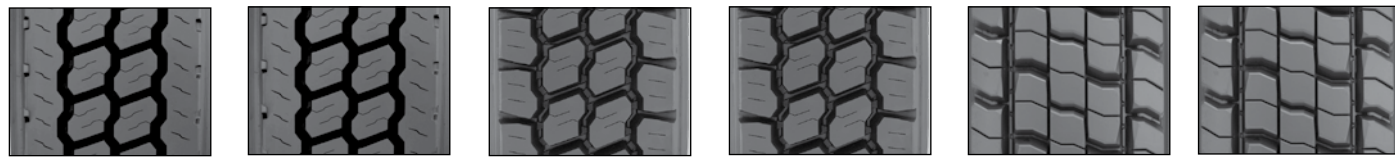


CrossTrac HA3		HSR		HSR 19.5		HSR1		HSR2		HSC	
TREAD DEPTH		TREAD DEPTH		TREAD DEPTH		TREAD DEPTH		TREAD DEPTH		TREAD DEPTH	
20/32"		23/32"	18/32"	16/32"		16/32"		20/32"	18/32"	23/32"	18/32"
TREAD WIDTH	190	215	185	TREAD WIDTH	180	TREAD WIDTH	205	TREAD WIDTH	215	TREAD WIDTH	215
	200	225	195		195		215		225		225
	210	235	215				225		235		235
	220	245	225				235		245		245
	230	260	235						245		255
	240		245								
			260								



HSC1		HSU2		Conti CityService HA3		HCS		LSR1	
TREAD DEPTH		TREAD DEPTH		TREAD DEPTH		TREAD DEPTH		TREAD DEPTH	
24/32"		26/32"		26/32"		32/32"		15/32"	
TREAD WIDTH	215	TREAD WIDTH	250	TREAD WIDTH	220	TREAD WIDTH	215	TREAD WIDTH	160
	225		260		230		225		180
	235		270		240		235		188
	245		280		250		245		195
	255				260		360		205
					270				
					280				

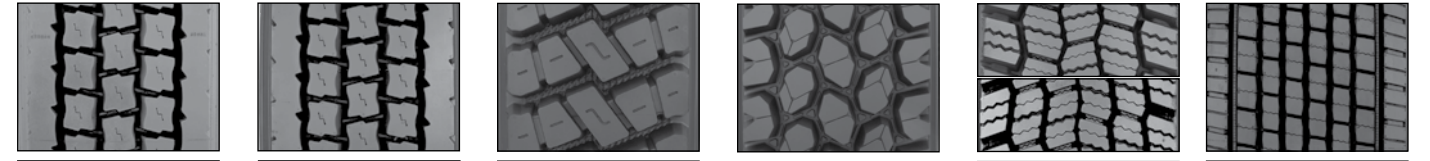
Drive Position Treads



HDL EP		HDL			HDR1				HDR1 EP		HDR2		HDR2 EP	
TREAD DEPTH		TREAD DEPTH			TREAD DEPTH				TREAD DEPTH		TREAD DEPTH		TREAD DEPTH	
26/32"		26/32"			26/32"				22/32"		26/32"		26/32"	
20/32"		215	215	200	215	215	190	160	215	205	185	215	215	
TREAD WIDTH	225	225	225	215	225	225	200	170	225	215	195	225	225	
	235	235	235	225	235	235	225	180	235	225	225	235	235	
	245	245	245	245	245	245	190	200	245	245	245	245	245	
							215							

ContiTread™

Drive Position Treads



HDL2 DL		HDL2 DL EP		HDC1		HDC1 HT		HDW2		HDL2 EP	
TREAD DEPTH		TREAD DEPTH		TREAD DEPTH		TREAD DEPTH		TREAD DEPTH		TREAD DEPTH	
28/32"		28/32"		26/32"		32/32"		27/32"		24/32"	
TREAD WIDTH	215	TREAD WIDTH	215	TREAD WIDTH	200	TREAD WIDTH	225	TREAD WIDTH	215	TREAD WIDTH	390
	225		225		215		235		225		400
	235		235		225		245		235		
	245		245		235				245*		
	260				245				260*		
					260						
					280						

* Directional

Trailer Position Treads



Conti Scandinavia HD3		Conti CityService HD3		Hybrid HT3		Eco Plus HT3		HTL EP	
TREAD DEPTH		TREAD DEPTH		TREAD DEPTH		TREAD DEPTH		TREAD DEPTH	
25/32"		32/32"		16/32"		13/32"		13/32"	
TREAD WIDTH	210	TREAD WIDTH	220	TREAD WIDTH	210	TREAD WIDTH	215	TREAD WIDTH	200
	220		230		220		225		210
	230		240		230		235		220
	240		250				245		230
			260						240
			270						
			280						

Comparison Chart

CONTINENTAL	MICHELIN	GOODYEAR	BRIDGESTONE
Conti EcoPlus HS3	X Line Energy Z	Endurance LHS	R283A Ecopia
Conti EcoPlus HS3 295/60R22.5	X Line Energy Z	-	-
HSL2 Eco Plus	XZE2	G399A LHS Fuel Max	-
Conti Hybrid HS3	X Multi Energy Z	Fuel Max RSA	R283S Ecopia
Conti Coach HA3	X Line Energy Z Coach	G670 RV MRT	-
Conti CrossTrac HA3	XZE2	Endurance RSA	R250 ED
HSR2	XZE2	Endurance RSA	R250 F
HSR2 Eco Plus	-	G662 RSA Fuel Max	R268 Ecopia
HSR2 SA	XZE2+, X Multiway XZE	G670 RV MRT	R250 ED
Conti Urban HA3	X InCity Z	-	-
Conti CityService HA3	XZUS2	Endurance WHA	M870
HSC1	X Works Z	G751 MSA	M853
HCS	XZL, XZL+	G278 MSD	L315
LSR1 - 17.5"	XZA	G114 LHT	-
Conti LAR 3	XPS RIB	G949 RSA Armor Max	Duravis R250
HDL2	X Line Energy D	Endurance LHD	M710 Ecopia
HDL2 Eco Plus	X-One Line Energy D	Fuel Max SSD	Greatec M835 Ecopia
HDL2+ Eco Plus	X Multi D	-	M749
HDL2 DL	XDA5+	G572A 1AD Fuel Max	M726 EL
HDL2 DL Eco Plus	X Multi Energy D	G572A LHD Fuel Max	M726 ELA
HDL Eco Plus	XDA Energy	Fuel Max LHD G505D	-
Conti Hybrid HD3	XDN2	Marathon LHD	M760 Ecopia
HDR2	X Multi D	G182 RSD	M770
HDR2 Eco Plus	-	G182 RSD GHG	-
HDR	XD2	G622 RSD	M726
HDC1	X Works XDY	G282 MSD	M799
HDC1 HT	XDE M/S	Workhorse MSD	M775
HDO	XDY-EX2	G741 MSD	L317, L320
HDW2	XDS2	-	M729F
Conti EcoPlus HT3	X Line Energy T	Fuel Max LHT	R197 Ecopia
HDL2 Eco Plus	XTA2 Energy	G114 LHT	R184
HDL1	X One Line Energy T	Fuel Max SST	Greatec R197 Ecopia
Conti Hybrid HT3	XTE	G619 RST	R196, R250F
HTR2	XFE	-	R244
HTR2 - 17.5"	X Multi T	G114 LHT	R184
HTC1	XZY3	G296 MSA	M854
HTC	-	G731 MSA	M840
Conti Hybrid HS3 - 19.5"	XZE	Endurance RSA	R238, R250F, R227F
Conti Hybrid HD3 - 19.5"	X Multi D	-	M724F, M895
Conti Hybrid HT3 - 19.5"	X Line Energy T	G159A	-
HSR - 19.5"	XZE	G647 RSS	R250F
HDR - 19.5"	XDS 2	G622 RSD ULT	-
Conti Scandinavia HD3 - 19.5"	XDS 2	-	M729F
Conti Terra HD3 - 19.5"	-	-	-

EPA SmartWay®

Launched in 2004, SmartWay® is an EPA program that reduces transportation-related emissions by creating incentives to improve supply chain fuel efficiency

Verified Low Rolling Resistance Tires

EPA has determined that certain tire models can reduce NOx emissions and fuel use by 3 percent or more, relative to the best selling new tires for line haul class 8 tractor trailers. These improvements are achieved under the following conditions:

1. Tires are used on the axle positions stated on the list below.
2. Verified low rolling resistance tires are installed on all of the axle positions of the tractor and trailer.
3. All tires must be properly inflated according to the manufacturer's specifications.

The following Continental low rolling resistance tires are SmartWay verified when used on class 8, line-haul tractor trailers:

Continental Tires

Steer	Conti EcoPlus HS3, HSL2 Eco Plus, Conti Hybrid HS3, Conti CrossTrac HA3, HSR2, HSR2 Eco Plus, Conti Coach HA3, HSR2 SA
Drive	HDL2, HDL2 Eco Plus, HDL2 DL Eco Plus, HDL Eco Plus, Conti Hybrid HD3, HDR2 Eco Plus, HDR
Trailer	Conti EcoPlus HT3, HTL1, Conti Hybrid HT3



Verified Low Rolling Resistance Retread Technologies

EPA has determined that certain retread technologies can reduce NOx emissions and fuel use by 3 percent or more, relative to the best selling retread technologies. These improvements are achieved under the following conditions:

1. Verified retread technologies are used on both the drive and trailer axles.
2. The retread technologies are used on the axle positions shown in the table below.
3. Verified low rolling resistance steer tires are used.
4. All tires must be properly inflated according to the manufacturers specifications.

The following low rolling resistance precure technologies are SmartWay verified when used on class 8, line-haul tractor trailers:

ContiTread™ Precure Treads

Steer	N/A
Drive	HDL Eco Plus, HDR1 EP, HDR2 Eco Plus, HDL2 Eco Plus, HDL2DL Eco Plus
Trailer	HTL Eco Plus, HTL1, EcoPlus HT3

For more information on SmartWay or to review the list of SmartWay verified low rolling resistance tires and retread technologies, visit www.epa.gov/smartway.

More tires and retreads may currently be verified by SmartWay, always review the SmartWay website for current information.

ContiTread™ Comparison Chart

CONTINENTAL	BANDAG	MICHELIN	GOODYEAR
CityService HA3	BRM2, BRM3	XZUS	G686
CityService HD3	BDM2, BDM	XDUS	-
CrossTrac HA3	Ultra All Position	XZE	G661 HSA
EcoPlus HT3	FuelTech Trailer	XT-1AT	G316 AT Fuel Max
HCS	BDY2	XZL, XZH	G177 Modified
HDC1	BDX	XDE M/S	G677 MSD
HDC1 HT	BDY2	XDY-EX	G741 MSD
HDL - 13	BTT2	XDC LL	G362
HDL - 20	FCR Drive	XDHT	G362
HDL - 26	Ultra Drive	XDA-HT	G362
HDL Eco Plus - 20	FCR Drive	XDA2	Fuel Max LHD G505D
HDL Eco Plus - 26	B710 Fuel Tech	XDA2	G572 LHD Fuel Max
HDL2 DL	MegaTrek	XD4	G328
HDL2 DL Eco Plus	FuelTech Drive	XDA2	G572 LHD Fuel Max
HDL2 Eco Plus	B835 FuelTech	X One Line Energy D	G392 SSD Fuel Max
HDR1 - 16	BDL	XDC	G622 LT
HDR1 - 20	BDL	XDC	G622
HDR1 - 22	BDR-AS	XDC	G622
HDR1 - 26	Ultra Drive	XDC	G338
HDR1 Eco Plus - 22	BDR-AS	XDC	G622
HDR2 - 22	BDR-AS	XDN2	G167
HDR2 - 26	BDR-HT3	XDN2	G282 MSD
HDR2 Eco Plus - 26	-	-	G682 RSD Fuel Max
HDW2	BDR-W	XDS2	G622 RSD
HSC - 18	BRX	XZY	G287 MSA
HSC - 23	RTP	XZY3	G287 MSA
HSC1	BRM2	XZY3	G287 MSA
HSR - 16	FCR Rib	XZE	G661 HSA
HSR - 18	Ultra All Position	XZE	G661 HSA
HSR - 23	BVD	XZE	G661 HSA
HSR1 - 16	FCR Rib	XZA	G647 RSA
HSR2 - 18	Ultra All Position	XZE	G661 HSA
HSR2 - 20	-	XZE2	G661 HSA
HSU2	BRM2	XZUS	G289 WHA
HTC1	BRM-WB	XZY Wide Base	G296 MSA
HTL	FCR	XTA-1	G314
HTL Eco Plus	FuelTech Trailer	XT-1AT	G316 AT Fuel Max
HTL1	B135 FuelTech	X One Line Energy T	G394 SST Fuel Max
HTR2	ECL ST-M	XZA Wide Base	G296 MSA
HTR2 SA	BTL-SA	XZE-SA	G619 RST
Hybrid HT3	BTL-SA	XZE-SA	G619 RST
LSR1- 17.5"	FCR Rib	XZA	G159
Scandinavia HD3	-	XDS2	-

ContiLifeCycle™ Process

Technology driven for high quality retread product



1 INSPECTION
Thorough initial casing inspection, using state-of-the-art technology.



2 BUFFING
Precise buff contours and consistent under tread thickness by computer controlled buffing.



4 TREAD BUILDING
Optimum casing fitting, ensured by laser guided tread application.



3 SKIVING & REPAIRS
Professional casing skiving and repair, conducted by Continental trained operators.



5 DOUBLE ENVELOPING
Optimum curing generated by modern enveloping technology.



6 CURING
Ideal retread curing with precisely controlled time, temperature, vacuum and pressure.



8 PROCESS CONTROL
Constant process and quality optimization by our globally connected retread specialists.



7 FINAL INSPECTION
Detailed final inspection, ending with high pressure testing.

3G Casing

A next-generation solution for easier casing management and maximum retreadability.

Increased belt cord angles for increased stiffness and improved penetration resistance

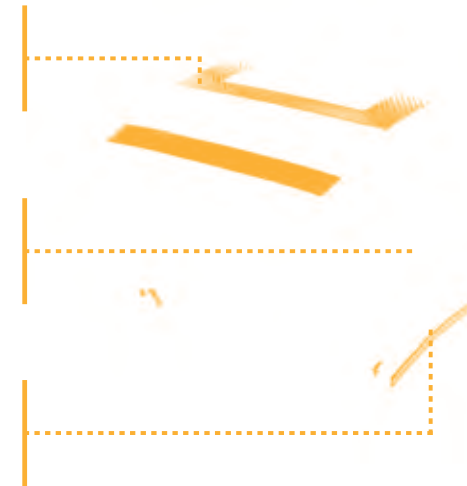
- Innovative belt package designed to reduce heat and increase durability

Increased tread volumes

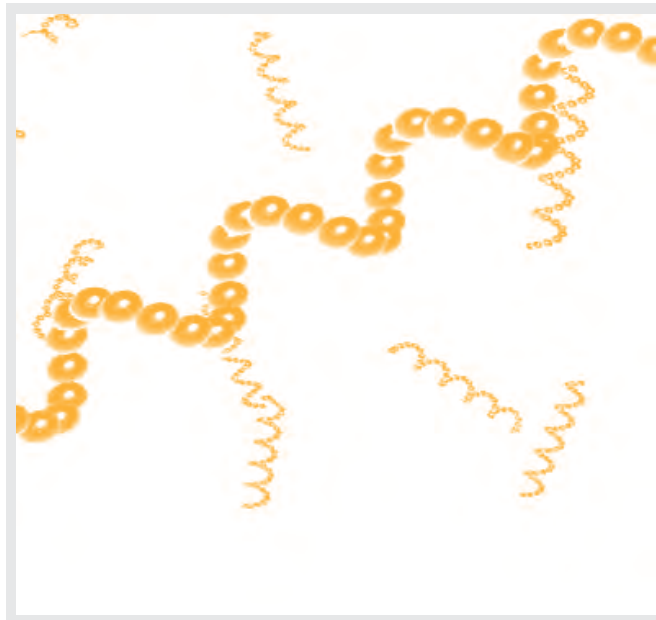
- The larger volume allows the casing to better support the tire's given load range
- Wide cavity, with a standard retread width to provide a single platform for greater ease of retreading

Technologically advanced bead core design for structural durability and extended product life

- Tear-resistant compound at steel cord edges
- Increased chafer cord density by 18%
- Optimized chafer angle for improved stiffness across body ply



Cutting-edge heat dissipating polymers to maintain casing durability.



Fuel savings:

- Improved casing design and compounding improves rolling resistance by reducing deflection and heat buildup

Mileage:

- Wider platform allows for wider and deeper treads
- Increased stability in the all new belt package promotes even wear throughout the tires life

Retreadability:

- Tighter belt cord angles help reduce heat buildup and penetrations to protect the casing
- Improved bead design for increased durability

Casing management:

- Standardized casing across steer, drive, and trailer makes casing management easier for fleet operations

The following Continental tires are built on the innovative 3G casing:

Steer Conti EcoPlus HS3, Conti Hybrid HS3, Conti CrossTrac HA3

Drive HDL2, HDL2 DL, HDL2 DL Eco Plus, Conti Hybrid HD3, HDR2, HDR2 Eco Plus, HDC1 HT, HDW2

Trailer Conti EcoPlus HT3

Digital Tire Monitoring Solutions

Delivering Your Lowest Overall Driving Cost

Digital tire monitoring technology can reduce tire-related breakdowns, eliminate manual tire pressure checks, improve fuel efficiency, and extend the life of tires and casings.

The Tire Sensor



- Forms the basis for both of Continental's digital tire monitoring solutions
- Battery-powered sensor lasts 6 years or 400,000 miles
- Transmits data via radio frequency to receiver devices
- One sensor per tire, mounted on inner liner for accurate temperature and pressure data

The Solutions

ContiPressureCheck™

- Single vehicle monitoring
- Driver accesses data via in-cab display
- Data is collected whenever the vehicle is turned on, allowing the driver to immediately correct any issues
- Real-time data helps prevent dangerous tire blow-outs and roadside incidents
- Can also integrate with telematics systems such as Zonar and PeopleNet so data can be viewed remotely



ContiConnect™

- Multiple vehicle monitoring
- Fleet manager accesses data via a web portal
- Data is collected whenever vehicles are within range of the yard reader station, allowing fleet yard personnel to immediately correct any issues
- Issues can be corrected before the vehicles leave the fleet yard
- Historical data and reports available to track tires over time



One of the largest automotive suppliers and tire manufacturers in the world, Continental develops pioneering technologies to make fleets safer, more efficient, and more connected. With innovative tire technology and digital fleet solutions, Continental optimizes tire lifecycle management.



Road Service Program

For tires, light mechanical & towing services.

A SINGLE NUMBER TO CALL One call to our emergency hotline, 877-TRUKFIX, triggers our North American network of service providers who stock Continental and General truck tire products.

ANYTIME AVAILABILITY Service for tires, light mechanical, towing and related emergency repairs is available 24 hours, 7 days a week in the U.S. and Canada. No question. Just call the hotline with your current or desired location of service and we take it from there. You can either request full service or simply get help locating your nearest dealer. Or use our mobile application to reach us with just a tap of your screen.



scan to download our dealer locator app

QUICK, PROFESSIONAL HELP WITH UNPARALLELED SERVICE TRUKFIX partners with one of the leading call centers in the industry. We verify each point of service to ensure they have our tire products stocked and can provide the repairs you need on an emergency basis. Our professionally-trained dispatchers stay in constant contact until the vehicle is back on the road. We provide better updating and better communication throughout the process than ever before! Every call is monitored, and a final follow-up call is made the next day to ensure the repairs are satisfactory.

AUTOMATIC ENROLLMENT, NO MEMBERSHIP FEES TRUKFIX is a free service for qualified national accounts of Continental Tire the Americas Commercial Vehicle Tires. No sign ups, no membership cards, and no waiting period once you become a national account customer.

REGULATED, PREDICTABLE PRICING WITH SIMPLE, CONVENIENT BILLING Drivers shouldn't have to worry about carrying cash on the road. Nor should fleet managers have to worry about paying too much for emergency repairs, especially when downtime is so costly. You'll receive fast, expert services and tire products whenever you need them, with guaranteed, published pricing. TRUKFIX offers processing through our National Account billing system with invoices sent to your designated billing location.

TRUKFIX by Continental is simply the better choice for emergency truck tires and related services.



BETTER CUSTOMER SERVICE

- One number to call: 877-TRUKFIX
- Trained dispatchers
- 24/7 availability
- North American network with thousands of dealers
- Mobile access through our smartphone app
- No cash or credit cards to carry



BETTER COMMUNICATION

- Either reach a dealer or ask for full emergency service help
- We stay in contact until the truck is back in service
- Servicing dealers are verified regularly and quickly located
- Coordinated and documented support for drivers
- Follow-up calls the next day to ensure you're satisfied



BETTER PRICING

- Service for Continental Tire the Americas, LLC National Accounts
- No membership fees
- Pay only when you need it
- Regulated, published tire and service pricing program
- Convenient billing through national account invoicing system



TRAINING

ENGAGE360 is a user-friendly program that's based around a virtual training center, with separate "rooms" for each brand. In turn, each brand includes individual modules that cover specific products, tire basics, and an overview of Continental.



ORDERING

ContiPressureCheck™ advanced tire pressure monitoring system is specifically designed for commercial vehicles. The system constantly monitors the pressure and temperature of each tire on the vehicle in order to provide real-time, on-demand tire status information and to warn the driver of tire-related problems before they become a critical concern.



REPORTING

If your fleet participates in Continental's TrukFix program, you will be able to generate a detailed report of breakdowns during a certain time period. ContiTrack2 is an inspection of your fleet performed by a Continental Truck Tire sales representative. A copy of the reports given to you by your sales representative will be available for review and printing.



ACCOUNTING

You can easily print or save your Continental Tire invoices and credits, in PDF format. You also have the ability to download an Excel version of the list of all invoices and credits in a date range. Financial Statements are accessible for printing or saving, and you have the option of viewing your last month's statement or a real time statement.



Long Haul

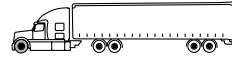
For Long-Distance Highway Driving

Engineered for your application. Tires for Long Haul use are designed for straight line, on-highway driving, distributing freight from state to state across great distances. Tires are optimized for high removal miles and fuel efficiency.

IMPORTANT NOTE:
Product details are subject to change, please visit our website or contact your local sales representative for the most up to date information.



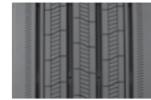
Conti EcoPlus HS3



- Enhanced footprint shape delivers significant wear improvements over original product variant while increasing removal mileage.
- New tread profile reduces sensitivity to road surface, fleet, and vehicle variations allowing for improved performance throughout tire life.
- Advanced compounding balances cut and tear resistance with optimized rolling resistance satisfying EPA SmartWay and CARB requirements.
- Superior casing construction allows high air dispersion for improved durability and retreadability.

Applications: Long haul.

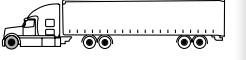
Tread B:



Tire Size	Load Range	Article Number	Tread Depth (32nds)	Max Speed (MPH)#	Static Loaded Radius IN (MM)	Overall Inflated Diameter IN (MM)	Overall Inflated Width IN (MM)	Loaded Section Width IN (MM)	Approved Rim(s)	Minimum Dual Spacing IN (MM)	Revs Per Mile (KM)	Tire Weight LB (KG)	MAX. LOAD@INFLATION		
													LBS PSI (KG KPa)	LBS PSI (KG KPa)	
TUBELESS TIRES ON 15 DEGREE DROP CENTER RIMS															
11R22.5	G	05110530000	19	75	19.5 (495)	41.8 (1062)	11.7 (296)	13.1 (331)	8.25, 7.50	12.5 (318)	495 (308)	123 (56)	6175 (2800)	105 (720)	5840 (2650)
11R22.5	H	05110520000	19	75	19.5 (495)	41.8 (1062)	11.7 (296)	13.1 (331)	8.25, 7.50	12.5 (318)	495 (308)	127 (58)	6610 (3000)	120 (830)	6005 (2725)
295/60R22.5* (Tread B)	J	05110840000	15	75	17.1 (434)	37.0 (940)	11.5 (292)	12.0 (304)	9.00, 9.75	12.9 (329)	574 (356)	110 (50)	7390 (3350)	130 (900)	6780 (3075)
295/75R22.5	G	05110510000	19	75	18.7 (475)	39.9 (1013)	11.4 (290)	12.3 (312)	8.25, 9.00	12.5 (318)	519 (322)	114 (52)	6175 (2800)	110 (760)	5675 (2575)
295/75R22.5	H	05110580000	19	75	18.7 (475)	39.9 (1013)	11.4 (290)	12.3 (312)	8.25, 9.00	12.5 (318)	519 (322)	120 (54)	7160 (3250)	120 (830)	6610 (3000)
11R24.5	G	05110570000	19	75	20.4 (518)	43.8 (1113)	11.7 (297)	13.1 (333)	8.25, 7.50	12.5 (318)	472 (293)	131 (59)	6610 (3000)	105 (720)	6005 (2725)
11R24.5	H	05110560000	19	75	20.4 (518)	43.8 (1113)	11.7 (297)	13.1 (333)	8.25, 7.50	12.5 (318)	472 (293)	138 (63)	7160 (3250)	120 (830)	6610 (3000)
285/75R24.5	G	05110550000	19	75	19.3 (490)	41.5 (1054)	11.4 (289)	12.9 (328)	8.25	12.5 (318)	499 (310)	120 (54)	6175 (2800)	110 (760)	5675 (2575)
285/75R24.5	H	05110540000	19	75	19.3 (490)	41.5 (1054)	11.4 (289)	12.9 (328)	8.25	12.5 (318)	499 (310)	123 (56)	6780 (3075)	120 (830)	6175 (2800)

Note - Note - Rim listed first is the measuring rim. Minimum Dual Spacing calculated without chains. * - ECE Certified. 295/60R22.5 size designated for car carrier application. # - Exceeding the lawful speed limit is neither recommended nor endorsed. Overall widths will change 0.1 inch (2.5 mm) for each 1/4 inch change in rim width. Minimum dual spacing should be adjusted accordingly. Continental Tire the Americas, LLC reserves the right to change product specifications at any time without notice or obligations. Please consult rim manufacturers load and inflation limits. Never exceed rim manufacturers limits without permission of component manufacturer.

HSL2 Eco Plus



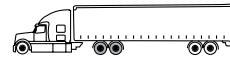
- Technologically advanced tread compound contributes to low rolling resistance for optimum fuel efficiency and significant removal mileage.
- Enhanced bead to belt package delivers optimal performance and maximum retreadability.
- Engineered for low noise and optimal weight distribution across the footprint.

Applications: Long haul, over the highway steering use.

Tire Size	Load Range	Article Number	Tread Depth (32nds)	Max Speed (MPH)#	Static Loaded Radius IN (MM)	Overall Inflated Diameter IN (MM)	Overall Inflated Width IN (MM)	Loaded Section Width IN (MM)	Approved Rim(s)	Minimum Dual Spacing IN (MM)	Revs Per Mile (KM)	Tire Weight LB (KG)	MAX. LOAD@INFLATION		
													LBS PSI (KG KPa)	LBS PSI (KG KPa)	
TUBELESS TIRES ON 15 DEGREE DROP CENTER RIMS															
11R22.5*	H	05110660000	19	75	19.3 (489)	41.4 (1052)	11.1 (282)	12.2 (310)	8.25, 7.50	12.5 (318)	500 (311)	119 (54)	6610 (3000)	120 (830)	6005 (2725)
275/80R22.5*	G	05110630000	19	75	18.6 (472)	40.1 (1019)	11.3 (287)	12.2 (310)	8.25, 7.50	12.5 (318)	516 (321)	112 (51)	6175 (2800)	110 (760)	5675 (2575)
275/80R22.5*	H	05110620000	19	75	18.6 (472)	40.1 (1019)	11.3 (287)	12.2 (310)	8.25, 7.50	12.5 (318)	516 (321)	113 (51)	7160 (3250)	120 (830)	6610 (3000)
11R24.5*	H	05110640000	19	75	20.3 (516)	43.4 (1102)	11.1 (282)	12.2 (310)	8.25, 7.50	12.5 (318)	477 (296)	127 (58)	7160 (3250)	120 (830)	6610 (3000)

Note - Rim listed first is the measuring rim. Minimum Dual Spacing calculated without chains. # - Exceeding the lawful speed limit is neither recommended nor endorsed. Overall widths will change 0.1 inch (2.5 mm) for each 1/4 inch change in rim width. Minimum dual spacing should be adjusted accordingly. Continental Tire the Americas, LLC reserves the right to change product specifications at any time without notice or obligations. Please consult rim manufacturers load and inflation limits. Never exceed rim manufacturers limits without permission of component manufacturer.

HDL2



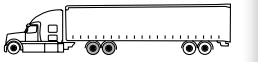
- Advanced tread compounding for maximum fuel efficiency.
- Innovative groove geometry minimizes stone retention.
- Proven pattern delivers excellent wear and long removal mileage.
- Built on the Conti 3G Casing for maximum retreadability.

Applications: Long haul over the road drive positions.

Tire Size	Load Range	Article Number	Tread Depth (32nds)	Max Speed (MPH)#	Static Loaded Radius IN (MM)	Overall Inflated Diameter IN (MM)	Overall Inflated Width IN (MM)	Loaded Section Width IN (MM)	Approved Rim(s)	Minimum Dual Spacing IN (MM)	Revs Per Mile (KM)	Tire Weight LB (KG)	MAX. LOAD@INFLATION		
													Single LBS PSI (KG KPa)	Dual LBS PSI (KG KPa)	
TUBELESS TIRES ON 15 DEGREE DROP CENTER RIMS															
11R22.5	G	05211220000	26	75	19.6 (499)	42.0 (1066)	11.7 (296)	13.1 (331)	8.25, 7.50	12.5 (318)	493 (306)	130 (59)	6175 (2800)	105 (720)	5840 (2650)
11R22.5	H	05211230000	26	75	19.6 (499)	42.0 (1066)	11.7 (296)	13.1 (331)	8.25, 7.50	12.5 (318)	493 (306)	130 (59)	6610 (3000)	120 (830)	6005 (2725)
295/75R22.5	G	05211180000	26	75	18.9 (481)	40.5 (1029)	11.5 (292)	12.9 (328)	8.25, 9.00	12.5 (318)	511 (318)	122 (55)	6175 (2800)	110 (760)	5675 (2575)
295/75R22.5	H	05211210000	26	75	18.9 (481)	40.5 (1029)	11.5 (292)	12.9 (328)	8.25, 9.00	12.5 (318)	511 (318)	122 (55)	6940 (3150)	120 (830)	6395 (2900)
11R24.5	G	05211240000	26	75	20.5 (521)	44.0 (1118)	11.7 (296)	13.1 (331)	8.25, 7.50	12.5 (318)	470 (292)	141 (63)	6610 (3000)	105 (720)	6005 (2725)
11R24.5	H	05211250000	26	75	20.5 (521)	44.0 (1118)	11.7 (296)	13.1 (331)	8.25, 7.50	12.5 (318)	470 (292)	141 (63)	7160 (3250)	120 (830)	6610 (3000)
285/75R24.5	G	05211260000	26	75	19.5 (495)	41.9 (1063)	11.5 (292)	12.9 (328)	8.25	12.5 (318)	494 (307)	128 (58)	6175 (2800)	110 (760)	5675 (2575)
285/75R24.5	H	05211310000	26	75	19.5 (495)	41.9 (1063)	11.5 (292)	12.9 (328)	8.25	12.5 (318)	494 (307)	128 (58)	6780 (3075)	120 (830)	6175 (2800)

Note - Rim listed first is the measuring rim. Minimum Dual Spacing calculated without chains. * - ECE Certified. # - Exceeding the lawful speed limit is neither recommended nor endorsed. Overall widths will change 0.1 inch (2.5 mm) for each 1/4 inch change in rim width. Minimum dual spacing should be adjusted accordingly. Continental Tire the Americas, LLC. reserves the right to change product specifications at any time without notice or obligations. Please consult rim manufacturers load and inflation limits. Never exceed rim manufacturers limits without permission of component manufacturer.

HDL2 Eco Plus



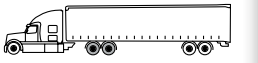
- Advanced tread compound with super single weight reduction provides lower rolling resistance.
- Features 27/32" tread depth, an evolving sipe tread design and closed shoulder.
- Three-dimensional center sipes increase groove strength for longevity, while allowing more tread block flexibility.
- Groove geometry designed with stress reduction elements to separate forces and reduce premature wear.

Applications: Long haul, over the highway drive position.

Tire Size	Load Range	Article Number	Tread Depth (32nds)	Max Speed (MPH)#	Static Loaded Radius IN (MM)	Overall Inflated Diameter IN (MM)	Overall Inflated Width IN (MM)	Loaded Section Width IN (MM)	Approved Rim(s)	Minimum Dual Spacing IN (MM)	Revs Per Mile (KM)	Tire Weight LB (KG)	MAX. LOAD@INFLATION		
													Single LBS PSI (KG KPa)	Dual LBS PSI (KG KPa)	
TUBELESS TIRES ON 15 DEGREE DROP CENTER RIMS															
445/50R22.5*	L	05210130000	27	75	18.8 (478)	40.4 (1027)	17.5 (445)	19.2 (488)	14.00	NA	512 (318)	200 (91)	10200 (4625)	120 (830)	NA

Note - Rim listed first is the measuring rim. Minimum Dual Spacing calculated without chains. * - ECE Certified # - Exceeding the lawful speed limit is neither recommended nor endorsed. Overall widths will change 0.1 inch (2.5 mm) for each 1/4 inch change in rim width. Minimum dual spacing should be adjusted accordingly. Continental Tire the Americas, LLC. reserves the right to change product specifications at any time without notice or obligations. Please consult rim manufacturers load and inflation limits. Never exceed rim manufacturers limits without permission of component manufacturer.

HDL2+ Eco Plus



- Advanced tread compound provides extended original mileage and improved rolling resistance.
- Closed shoulder tread design provides even tread wear while still providing excellent traction.
- Patented innovative groove technology leads to minimal stone retention, extending casing life.
- 24/32" tread depth for optimized mileage and rolling resistance
- Offers large capacity and car carrier trucks the ability to carry more weight without sacrificing vehicle height.

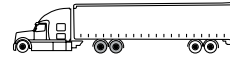
Applications: Long haul, over the highway drive, for large capacity trucks or car carriers.

Tire Size	Load Range	Article Number	Tread Depth (32nds)	Max Speed (MPH)#	Static Loaded Radius IN (MM)	Overall Inflated Diameter IN (MM)	Overall Inflated Width IN (MM)	Loaded Section Width IN (MM)	Approved Rim(s)	Minimum Dual Spacing IN (MM)	Revs Per Mile (KM)	Tire Weight LB (KG)	MAX. LOAD@INFLATION		
													Single LBS PSI (KG KPa)	Dual LBS PSI (KG KPa)	
TUBELESS TIRES ON 15 DEGREE DROP CENTER RIMS															
295/60R22.5*	J	05211410000	24	75	17.1 (434)	37.0 (940)	11.5 (292)	12.0 (304)	9.00, 9.75	12.9 (329)	574 (356)	116 (53)	7390 (3350)	130 (900)	6780 (3075)

Note - Rim listed first is the measuring rim. Minimum Dual Spacing calculated without chains. * - ECE Certified # - Exceeding the lawful speed limit is neither recommended nor endorsed. Overall widths will change 0.1 inch (2.5 mm) for each 1/4 inch change in rim width. Minimum dual spacing should be adjusted accordingly. Continental Tire the Americas, LLC. reserves the right to change product specifications at any time without notice or obligations. Please consult rim manufacturers load and inflation limits. Never exceed rim manufacturers limits without permission of component manufacturer.

HDL2 DL

3G Casing



- 32/32" tread depth provides high mileage and low cost per mile.
- Patented innovative groove technology leads to minimal stone retention, extending casing life.
- Minimized wear and excellent traction over the life of the tire, through a wide, closed shoulder tread and numerous.
- Superior casing construction allows high air dispersion for improved durability and enhanced retreadability.
- Built on the Conti 3G Casing for maximum retreadability.

Applications: Long haul, over the highway drive position.

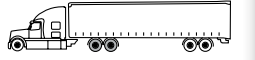
Tire Size	Load Range	Article Number	Tread Depth (32nds)	Max Speed (MPH)#	Static Loaded Radius IN (MM)	Overall Inflated Diameter IN (MM)	Overall Inflated Width IN (MM)	Loaded Section Width IN (MM)	Approved Rim(s)	Minimum Dual Spacing IN (MM)	Revs Per Mile (KM)	Tire Weight LB (KG)	MAX. LOAD@INFLATION			
													LBS PSI (KG KPa)	LBS PSI (KG KPa)		
TUBELESS TIRES ON 15 DEGREE DROP CENTER RIMS																
11R22.5*	G	05686240000	32	75	19.7 (501)	42.2 (1071)	11.6 (294)	13.0 (329)	8.25, 7.50	12.5 (318)	491 (305)	138 (63)	6175 (2800)	105 (720)	5840 (2650)	105 (720)
11R22.5*	H	05687030000	32	75	19.7 (501)	42.2 (1071)	11.6 (294)	13.0 (329)	8.25, 7.50	12.5 (318)	491 (305)	139 (63)	6610 (3000)	120 (830)	6005 (2725)	120 (830)
275/80R22.5*	G	05686270000	32	75	19.1 (485)	40.8 (1036)	11.4 (289)	12.7 (323)	8.25, 7.50	12.5 (318)	507 (315)	133 (60)	6175 (2800)	110 (760)	5675 (2575)	110 (760)
11R24.5*	G	05686250000	32	75	20.7 (526)	44.2 (1122)	11.6 (295)	13.0 (330)	8.25, 7.50	12.5 (318)	468 (291)	148 (67)	6610 (3000)	105 (720)	6005 (2725)	105 (720)
11R24.5*	H	05686260000	32	75	20.7 (526)	44.2 (1122)	11.6 (295)	13.0 (330)	8.25, 7.50	12.5 (318)	468 (291)	149 (68)	7160 (3250)	120 (830)	6610 (3000)	120 (830)
285/75R24.5*	G	05686280000	32	75	19.7 (501)	42.2 (1073)	11.4 (290)	12.6 (321)	8.25	12.5 (318)	490 (305)	136 (62)	6175 (2800)	110 (760)	5675 (2575)	110 (760)

Note - Rim listed first is the measuring rim. * - ECE Certified Minimum Dual Spacing calculated without chains. # - Exceeding the lawful speed limit is neither recommended nor endorsed. Overall widths will change 0.1 inch (2.5 mm) for each 1/4 inch change in rim width. Minimum dual spacing should be adjusted accordingly. Continental Tire the Americas, LLC reserves the right to change product specifications at any time without notice or obligations. Please consult rim manufacturers load and inflation limits. Never exceed rim manufacturers limits without permission of component manufacturer.

HDL2 DL Eco Plus



3G Casing



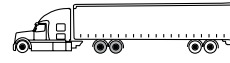
- Advanced tread compounding provides this Eco Plus version with 33% less rolling resistance than the original HDL2 DL.
- 32/32" tread depth provides high mileage and low cost per mile.
- Patented innovative groove technology leads to minimal stone retention, extending casing life.
- Minimized wear and excellent traction over the life of the tire, through a wide, closed shoulder tread and numerous tread blocks with multiple grip edges.
- Built on the Conti 3G casing for maximum retreadability.

Applications: Long haul, over the highway drive position.

Tire Size	Load Range	Article Number	Tread Depth (32nds)	Max Speed (MPH)#	Static Loaded Radius IN (MM)	Overall Inflated Diameter IN (MM)	Overall Inflated Width IN (MM)	Loaded Section Width IN (MM)	Approved Rim(s)	Minimum Dual Spacing IN (MM)	Revs Per Mile (KM)	Tire Weight LB (KG)	MAX. LOAD@INFLATION			
													LBS PSI (KG KPa)	LBS PSI (KG KPa)		
TUBELESS TIRES ON 15 DEGREE DROP CENTER RIMS																
11R22.5*	G	05211100000	32	75	19.7 (501)	42.2 (1071)	11.6 (294)	13.0 (329)	8.25, 7.50	12.5 (318)	491 (305)	138 (63)	6175 (2800)	105 (720)	5840 (2650)	105 (720)
275/80R22.5*	G	05210120000	32	75	19.1 (485)	40.8 (1036)	11.4 (289)	12.7 (323)	8.25, 7.50	12.5 (318)	507 (315)	133 (60)	6175 (2800)	110 (760)	5675 (2575)	110 (760)

Note - Rim listed first is the measuring rim. Minimum Dual Spacing calculated without chains. * - ECE Certified # - Exceeding the lawful speed limit is neither recommended nor endorsed. Overall widths will change 0.1 inch (2.5 mm) for each 1/4 inch change in rim width. Minimum dual spacing should be adjusted accordingly. Continental Tire the Americas, LLC reserves the right to change product specifications at any time without notice or obligations. Please consult rim manufacturers load and inflation limits. Never exceed rim manufacturers limits without permission of component manufacturer.

HDL Eco Plus



- Advanced tread compound provides long original mileage and low rolling resistance.
- Closed shoulder tread design provides even tread wear while still providing excellent traction.
- Stone ejection system reduces stone retention and casing penetrations.
- 28/32" tread depth for optimized mileage and rolling resistance.

Applications: Long haul, over the highway, drive position.

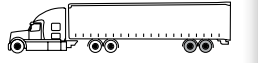
Tire Size	Load Range	Article Number	Tread Depth (32nds)	Max Speed (MPH)#	Static Loaded Radius IN (MM)	Overall Inflated Diameter IN (MM)	Overall Inflated Width IN (MM)	Loaded Section Width IN (MM)	Approved Rim(s)	Minimum Dual Spacing IN (MM)	Revs Per Mile (KM)	Tire Weight LB (KG)	MAX. LOAD@INFLATION			
													LBS PSI (KG KPa)	LBS PSI (KG KPa)		
TUBELESS TIRES ON 15 DEGREE DROP CENTER RIMS																
11R22.5*	G	05682990000	28	75	19.6 (498)	42.0 (1066)	11.1 (282)	12.1 (307)	8.25, 7.50	12.5 (318)	493 (306)	127 (58)	6175 (2800)	105 (720)	5840 (2650)	105 (720)
275/80R22.5*	G	05683980000	28	75	18.9 (480)	40.8 (1036)	11.0 (279)	12.1 (307)	8.25, 7.50	12.5 (318)	509 (315)	119 (54)	6175 (2800)	110 (760)	5675 (2575)	110 (760)
275/80R22.5*	H	05683770000	28	75	18.9 (480)	40.8 (1036)	11.0 (279)	12.1 (307)	8.25, 7.50	12.5 (318)	509 (315)	119 (54)	6940 (3150)	120 (830)	6175 (2800)	120 (830)
11R24.5	H	05683760000	28	75	20.6 (523)	44.0 (1117)	11.1 (282)	12.1 (307)	8.25, 7.50	12.5 (318)	470 (292)	136 (62)	7160 (3250)	120 (830)	6610 (3000)	120 (830)
285/75R24.5	H	05683780000	28	75	19.6 (498)	42.0 (1066)	10.7 (272)	12.1 (307)	8.25, 7.50	12.5 (318)	493 (306)	128 (58)	6780 (3075)	120 (830)	6175 (2800)	120 (830)

Note - Rim listed first is the measuring rim. Minimum Dual Spacing calculated without chains. * - ECE Certified. # - Exceeding the lawful speed limit is neither recommended nor endorsed. Overall widths will change 0.1 inch (2.5 mm) for each 1/4 inch change in rim width. Minimum dual spacing should be adjusted accordingly. Continental Tire the Americas, LLC. reserves the right to change product specifications at any time without notice or obligations. Please consult rim manufacturers load and inflation limits. Never exceed rim manufacturers limits without permission of component manufacturer.

Conti EcoPlus HT3



3G Casing



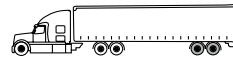
- Ultra low rolling resistant trailer tire delivers outstanding fuel efficiency in long haul applications.
- Advanced tread compound and optimized tread design provide exceptional mileage.
- Built on the Conti 3G Casing for maximum retreadability.
- Improved sidewall construction for defense against curbing, cuts and abrasions.

Applications: Trailers and free rolling positions.

Tire Size	Load Range	Article Number	Tread Depth (32nds)	Max Speed (MPH)#	Static Loaded Radius IN (MM)	Overall Inflated Diameter IN (MM)	Overall Inflated Width IN (MM)	Loaded Section Width IN (MM)	Approved Rim(s)	Minimum Dual Spacing IN (MM)	Revs Per Mile (KM)	Tire Weight LB (KG)	MAX. LOAD@INFLATION			
													LBS PSI (KG KPa)	LBS PSI (KG KPa)		
TUBELESS TIRES ON 15 DEGREE DROP CENTER RIMS																
11R22.5	G	05310280000	13	75	19.2 (488)	41.2 (1046)	11.7 (297)	13.1 (331)	8.25, 7.50	12.5 (318)	502 (312)	116 (53)	6175 (2800)	105 (720)	5840 (2650)	105 (720)
11R22.5	H	05310310000	13	75	19.2 (488)	41.2 (1046)	11.7 (297)	13.1 (331)	8.25, 7.50	12.5 (318)	502 (312)	117 (53)	6610 (3000)	120 (830)	6005 (2725)	120 (830)
255/70R22.5	H	05310340000	18	75	17.1 (434)	36.6 (929)	9.9 (251)	10.8 (274)	7.50, 8.25	11.3 (287)	566 (352)	95 (43)	5510 (2500)	120 (830)	5070 (2300)	120 (830)
295/75R22.5	G	05310270000	13	75	18.5 (470)	39.7 (1008)	11.5 (292)	12.9 (328)	8.25, 9.00	12.5 (318)	522 (324)	108 (49)	6175 (2800)	110 (760)	5675 (2575)	110 (760)
11R24.5	G	05310260000	13	75	20.1 (511)	43.2 (1097)	11.7 (296)	13.1 (331)	8.25, 7.50	12.5 (318)	479 (298)	121 (54)	6610 (3000)	105 (720)	6005 (2725)	105 (720)
11R24.5	H	05310350000	13	75	20.1 (511)	43.2 (1097)	11.7 (296)	13.1 (331)	8.25, 7.50	12.5 (318)	479 (298)	122 (55)	7160 (3250)	120 (830)	6610 (3000)	120 (830)
285/75R24.5	G	05310250000	13	75	19.1 (485)	41.1 (1044)	11.5 (292)	12.9 (329)	8.25	12.5 (318)	504 (313)	112 (51)	6175 (2800)	110 (760)	5675 (2575)	110 (760)

Note - Rim listed first is the measuring rim. Minimum Dual Spacing calculated without chains. # - Exceeding the lawful speed limit is neither recommended nor endorsed. Overall widths will change 0.1 inch (2.5 mm) for each 1/4 inch change in rim width. Minimum dual spacing should be adjusted accordingly. Continental Tire the Americas, LLC. reserves the right to change product specifications at any time without notice or obligations. Please consult rim manufacturers load and inflation limits. Never exceed rim manufacturers limits without permission of component manufacturer.

HTL1



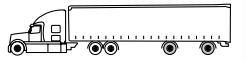
- 13/32" tread depth minimizes irregular wear.
- Shoulder defense groove provides protection against rapid shoulder wear.
- Patented innovative groove technology leads to minimum stone retention, extending casing life.

Applications: Super single fitment for long haul, trailer position in highway service.

Tire Size	Load Range	Article Number	Tread Depth (32nds)	Max Speed (MPH)#	Static Loaded Radius IN (MM)	Overall Inflated Diameter IN (MM)	Overall Inflated Width IN (MM)	Loaded Section Width IN (MM)	Approved Rim(s)	Minimum Dual Spacing IN (MM)	Revs Per Mile (KM)	Tire Weight LB (KG)	MAX. LOAD@INFLATION		
													LBS PSI (KG KPa)	LBS PSI (KG KPa)	
TUBELESS TIRES ON 15 DEGREE DROP CENTER RIMS															
445/50R22.5*	L	05310000000	13	75	18.1 (460)	39.2 (996)	17.3 (439)	19.0 (483)	14.00	NA	528 (328)	174 (79)	10200 (4625)	120 (830)	NA

* - ECE Certified # - Exceeding the lawful speed limit is neither recommended nor endorsed. Overall widths will change 0.1 inch (2.5 mm) for each 1/4 inch change in rim width. Minimum dual spacing should be adjusted accordingly. Continental Tire the Americas, LLC reserves the right to change product specifications at any time without notice or obligations. Please consult rim manufacturers load and inflation limits. Never exceed rim manufacturers limits without permission of component manufacturer.

Conti Hybrid HT3



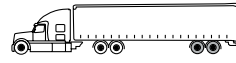
- Advanced tread compound to achieve performance in high scrub application and still maintain low rolling resistance.
- Patented groove technology for minimal stone retention, extending casing life.
- Pyramidal stone ejection system integrated into the center groove for added casing protection.

Applications: Spread-axle trailer. Long haul and regional use.

Tire Size	Load Range	Article Number	Tread Depth (32nds)	Max Speed (MPH)#	Static Loaded Radius IN (MM)	Overall Inflated Diameter IN (MM)	Overall Inflated Width IN (MM)	Loaded Section Width IN (MM)	Approved Rim(s)	Minimum Dual Spacing IN (MM)	Revs Per Mile (KM)	Tire Weight LB (KG)	MAX. LOAD@INFLATION		
													LBS PSI (KG KPa)	LBS PSI (KG KPa)	
TUBELESS TIRES ON 15 DEGREE DROP CENTER RIMS															
11R22.5	G	05321060000	16	75	19.2 (488)	41.2 (1046)	11.1 (282)	12.0 (305)	8.25	12.5 (318)	502 (312)	112 (51)	6175 (2800)	105 (720)	5840 (2650)
11R22.5	H	05321250000	16	75	19.2 (488)	41.2 (1046)	11.1 (282)	12.0 (305)	8.25	12.5 (318)	502 (312)	112 (51)	6610 (3000)	120 (830)	6005 (2725)
295/75R22.5	G	05321040000	16	75	18.5 (470)	39.6 (1006)	11.1 (282)	12.6 (320)	8.25	12.5 (318)	523 (325)	107 (49)	6175 (2800)	110 (760)	5675 (2575)
295/75R22.5	H	05321270000	16	75	18.5 (470)	39.6 (1006)	11.1 (282)	12.6 (320)	8.25	12.5 (318)	523 (325)	113 (51)	7160 (3250)	120 (830)	6610 (3000)
11R24.5	G	05321070000	16	75	20.2 (513)	43.1 (1095)	11.1 (282)	12.0 (305)	8.25	12.5 (318)	480 (298)	120 (54)	6610 (3000)	105 (720)	6005 (2725)
11R24.5	H	05321260000	16	75	20.2 (513)	43.1 (1095)	11.1 (282)	12.0 (305)	8.25	12.5 (318)	480 (298)	120 (54)	7160 (3250)	125 (830)	6610 (3000)
285/75R24.5	G	05321050000	16	75	19.2 (488)	40.9 (1039)	10.7 (272)	12.1 (307)	8.25	12.5 (318)	506 (314)	112 (51)	6175 (2800)	110 (760)	5675 (2575)
285/75R24.5	H	05321280000	16	75	19.2 (488)	40.9 (1039)	10.7 (272)	12.1 (307)	8.25	12.5 (318)	506 (314)	113 (51)	6780 (3075)	120 (830)	6175 (2800)

Note - Rim listed first is the measuring rim. Minimum Dual Spacing calculated without chains. * - ECE Certified # - Exceeding the lawful speed limit is neither recommended nor endorsed. Overall widths will change 0.1 inch (2.5 mm) for each 1/4 inch change in rim width. Minimum dual spacing should be adjusted accordingly. Continental Tire the Americas, LLC reserves the right to change product specifications at any time without notice or obligations. Please consult rim manufacturers load and inflation limits. Never exceed rim manufacturers limits without permission of component manufacturer.

HTL2 Eco Plus



- Low rolling resistance compound provides excellent fuel economy at cool operating temperatures.
- Advanced tread design provides long original mileage and low cost per mile.
- Innovative groove geometry promotes efficient water evacuation, traction and wet braking capabilities throughout tire life.
- Heavy ply construction for structural durability in large capacity applications.
- Patented groove technology leads to minimum stone retention, extending casing life.

Applications: Heavy haul and long haul trailer positions.

Tire Size	Load Range	Article Number	Tread Depth (32nds)	Max Speed (MPH)#	Static Loaded Radius IN (MM)	Overall Inflated Diameter IN (MM)	Overall Inflated Width IN (MM)	Loaded Section Width IN (MM)	Approved Rim(s)	Minimum Dual Spacing IN (MM)	Revs Per Mile (KM)	Tire Weight LB (KG)	MAX. LOAD@INFLATION Single Dual	
TUBELESS TIRES ON 15 DEGREE DROP CENTER RIMS														
215/75R17.5	J	05310170000	15	75	14.1 (359)	30.4 (772)	8.5 (215)	9.1 (231)	6.00, 6.75	9.5 (242)	681 (423)	61 (28)	4805 125 (2180 860)	4540 125 (2060 860)
235/75R17.5	J	05310180000	13	75	14.5 (369)	31.6 (802)	9.2 (234)	10.0 (254)	6.75, 7.50	10.6 (269)	656 (407)	65 (29)	6005 125 (2725 860)	5675 125 (2575 860)
245/70R17.5	J	05310190000	13	75	14.5 (369)	31.6 (802)	9.2 (234)	10.0 (254)	6.75, 7.50	10.6 (269)	656 (407)	65 (29)	6005 125 (2725 860)	5675 125 (2575 860)

Note - Rim listed first is the measuring rim. Minimum Dual Spacing calculated without chains. # - Exceeding the lawful speed limit is neither recommended nor endorsed. Overall widths will change 0.1 inch (2.5 mm) for each 1/4 inch change in rim width. Minimum dual spacing should be adjusted accordingly. Continental Tire the Americas, LLC reserves the right to change product specifications at any time without notice or obligations. Please consult rim manufacturers load and inflation limits. Never exceed rim manufacturers limits without permission of component manufacturer.

ContiTread™

Drive Position

HDL2 DL 28/32"

Application: Long Haul, Over the Highway, Drive Position



- Optimized compound for regional/long hauling with ultra deep tread delivers high mileage.
- Minimized wear and excellent traction over the life of the tire through a wide, closed shoulder tread and numerous tread blocks with multiple grip edges.
- Patented innovative groove technology leads to minimum stone retention, extending casing life.

ARTICLE #	WIDTH	DEPTH
18207130000	215	28/32"
18207140000	225	28/32"
18207150000	235	28/32"
18208190000	245	28/32"
18209420000	260	28/32"

HDL2 DLEP 28/32"

Application: Long Haul, over the highway, drive position



- Advanced, fuel efficient compound provides long original mileage and rolling resistance.
- Minimized wear and excellent traction over the life of the tire through a wide, closed shoulder tread and numerous tread blocks with multiple grip edges.
- Patented innovative groove technology leads to minimum stone retention, extending casing life.

ARTICLE #	WIDTH	DEPTH
18208070000	215	28/32"
18208080000	225	28/32"
18208090000	235	28/32"
18208100000	245	28/32"

HDL

Application: Long Haul, Over the Highway, Drive Position



- Cut and tear resistant tread compound for excellent wear in regional and light On/Off drive applications.
- Closed shoulder tread design provides even tread wear while still providing excellent traction.
- Patented innovative groove technology leads to minimum stone retention, extending casing life.

ARTICLE #	WIDTH	DEPTH
18208240000	215	26/32"
18208250000	225	26/32"
18208260000	235	26/32"
18208310000	245	26/32"
18208270000	215	20/32"
18208280000	225	20/32"
18208290000	235	20/32"
18208300000	245	20/32"
18207920000	200	13/32"
18207930000	215	13/32"
18313000000	225	13/32"
18206260000	235	13/32"

HDL EP

Application: Long Haul, Over the Highway, Drive Position



- Cut and tear resistant tread compound for excellent wear in regional and light On/Off drive applications.
- Closed shoulder tread design provides even tread wear while still providing excellent traction.
- Patented innovative groove technology leads to minimum stone retention, extending casing life.

ARTICLE #	WIDTH	DEPTH
18204820000	215	26/32"
18204830000	225	26/32"
18204840000	235	26/32"
18204850000	245	26/32"
18204860000	215	20/32"
18204870000	225	20/32"
18204880000	235	20/32"
18204890000	245	20/32"

Conti Tread™

Drive Position (continued)

HDL2 EP 24/32" Application: Long Haul, over the highway, drive position



- Super single drive tire with advanced compounding for low rolling resistance and long mileage.

ARTICLE #	WIDTH	DEPTH
18209240000	390	24/32"
18206780000	400	24/32"

Trailer Position

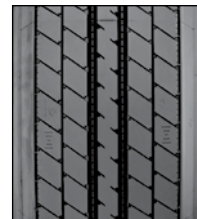
Eco Plus HT3 Application: Long Haul, Over the Highway, Trailer Position



- Ultra low rolling resistant compounding
- Optimized tread pattern resists irregular wear.
- 13/32nd tread depth for long removal mileage.
- Fuel Saving Edge technology available in 245mm tread width for maximum fuel efficiency.

ARTICLE #	WIDTH	DEPTH
18208620000	215	13
18208630000	225	13
18208640000	235	13
18208650000	245*	13

HTL 13/32" Application: Long Haul, Over the Highway, Trailer Position



- 13/32" tread depth minimizes tread squirm and irregular wear.
- Patented innovative groove technology leads to minimum stone retention, extending casing life.

ARTICLE #	WIDTH	DEPTH
18208720000	200	13/32"
18205420000	210	13/32"
18205440000	220	13/32"
18205460000	230	13/32"
18206800000	240	13/32"

HTL EP 13/32" Application: Long Haul, Over the Highway, Trailer Position

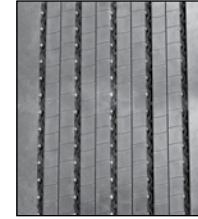


- Advanced, fuel efficient compound provides long original mileage and low rolling resistance.
- 13/32" tread depth minimizes tread squirm and irregular wear.
- Patented innovative groove technology leads to minimum stone retention, extending casing life.

ARTICLE #	WIDTH	DEPTH
18208600000	200	13/32"
18204900000	210	13/32"
18204910000	220	13/32"
18204920000	230	13/32"
18206830000	240	13/32"

Conti Tread™

HTL1 13/32" Application: Regional/Long Haul, SS Trailer Position



- Optimized compound for regional and long haul deliveries.
- Proven 13/32" tread design.
- New solid shoulder design, for durability.
- Patented innovative groove technology leads to minimum stone retention, extending casing life

ARTICLE #	WIDTH	DEPTH
18214670000	390	13/32"
18214680000	400	13/32"
18214690000	410	13/32"

Hybrid HT3 16/32" Application: Long Haul to Regional, Trailer Position



- Winged tread for use in high scrub applications, particularly spread-axle and multi-axle.
- Durable high mileage compounding.
- Pyramidal stone ejection system integrated into the center groove for added casing protection.

ARTICLE #	WIDTH	DEPTH
18214630000	210	16/32"
18214640000	220	16/32"
18214650000	230	16/32"

Super Regional

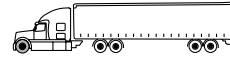
For Hub-and-Spoke Freight Distribution

Engineered for your application. Tires for Super Regional use are designed to support new distribution models where freight is moved from one point to another in a more localized area to ensure fulfillment in a narrow window of time. Tires are optimized for high removal mileage, as well as fuel efficiency.

IMPORTANT NOTE:
Product details are subject to change, please visit our website or contact your local sales representative for the most up to date information.



Conti Hybrid HS3



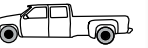
- Increased stiffness in the belt package promotes smooth, even tread wear.
- Hybrid tread compounding delivers long removal mileage and low rolling resistance.
- Fuel Saving Edge technology designed to increase fuel efficiency and application flexibility.
- Built on the Conti3G casing for maximum retreadability.

Applications: Over the road Hybrid steer and all position use.

Tire Size	Load Range	Article Number	Tread Depth (32nds)	Max Speed (MPH)#	Static Loaded Radius IN (MM)	Overall Inflated Diameter IN (MM)	Overall Inflated Width IN (MM)	Loaded Section Width IN (MM)	Approved Rim(s)	Minimum Dual Spacing IN (MM)	Revs Per Mile (KM)	Tire Weight LB (KG)	MAX. LOAD@INFLATION	
													LBS PSI (KG KPa)	LBS PSI (KG KPa)
TUBELESS TIRES ON 15 DEGREE DROP CENTER RIMS														
11R22.5	G	05110780000	20	75	19.5 (495)	41.6 (1056)	11.7 (296)	13.1 (331)	8.25, 7.50	12.5 (318)	495 (308)	118 (54)	6175 105 (2800 720)	5840 105 (2650 720)
11R22.5	H	05110790000	20	75	19.5 (495)	41.6 (1056)	11.7 (296)	13.1 (331)	8.25, 7.50	12.5 (318)	495 (308)	119 (54)	6610 120 (3000 830)	6005 120 (2725 830)
295/75R22.5	G	05110950000	20	75	18.7 (474)	40.0 (1017)	11.5 (292)	12.3 (313)	8.25, 9.00	12.5 (318)	518 (322)	114 (52)	6175 110 (2800 760)	5675 110 (2575 760)
295/75R22.5	H	05110960000	20	75	18.7 (474)	40.0 (1017)	11.5 (292)	12.3 (313)	8.25, 9.00	12.5 (318)	518 (322)	115 (52)	7160 120 (3250 830)	6610 120 (3000 830)

Note - Rim listed first is the measuring rim. Minimum Dual Spacing calculated without chains. # - Exceeding the lawful speed limit is neither recommended nor endorsed. Overall widths will change 0.1 inch (2.5 mm) for each 1/4 inch change in rim width. Minimum dual spacing should be adjusted accordingly. Continental Tire the Americas, LLC reserves the right to change product specifications at any time without notice or obligations. Please consult rim manufacturers load and inflation limits. Never exceed rim manufacturers limits without permission of component manufacturer.

Conti Hybrid HS3 - 19.5"



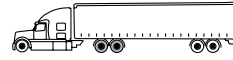
- Two-layer tread construction combines high mileage performance in the cap compound with significant rolling resistance improvements in the base compound.
- Narrowed groove widths result in increased pattern volume which improves wear resistance to guarantee high mileage performance.
- Pocket sipe technology with full-depth sipes to enhance water displacement and improve wet performance over the life of the tire.

Applications: Long haul/Regional over the highway all-position use.

Tire Size	Load Range	Article Number	Tread Depth (32nds)	Max Speed (MPH)#	Static Loaded Radius IN (MM)	Overall Inflated Diameter IN (MM)	Overall Inflated Width IN (MM)	Loaded Section Width IN (MM)	Approved Rim(s)	Minimum Dual Spacing IN (MM)	Revs Per Mile (KM)	Tire Weight LB (KG)	MAX. LOAD@INFLATION	
													LBS PSI (KG KPa)	LBS PSI (KG KPa)
TUBELESS TIRES ON 15 DEGREE DROP CENTER RIMS														
225/70R19.5	G	05111140000	16	87	14.9 (378)	31.9 (810)	8.6 (218)	9.4 (239)	6.00, 6.75	10.0 (254)	649 (403)	62 (28)	3970 110 (1800 760)	3750 110 (1700 760)
245/70R19.5	G	05122970000	16	81	15.2 (386)	32.8 (833)	9.5 (241)	10.3 (262)	6.75, 7.50	11.0 (279)	631 (392)	75 (34)	4540 110 (2060 760)	4410 110 (2000 760)
245/70R19.5	H	05111130000	16	81	15.2 (386)	32.8 (833)	9.5 (241)	10.3 (262)	6.75, 7.50	11.0 (279)	631 (392)	75 (34)	4940 120 (2240 830)	4675 120 (2120 830)
265/70R19.5	H	05121160000	17	81	15.8 (401)	34.7 (881)	10.3 (262)	10.7 (272)	7.50, 6.75, 8.25	11.2 (286)	613 (380)	82 (37)	5510 115 (2500 790)	5205 115 (2360 790)
285/70R19.5	H	05121130000	18	81	16.2 (412)	35.9 (911)	11.1 (283)	11.6 (294)	8.25, 7.50, 9.00	12.5 (318)	590 (366)	93 (42)	6610 125 (3000 860)	6175 125 (2800 860)

Note - Rim listed first is the measuring rim. Minimum Dual Spacing calculated without chains. # - Exceeding the lawful speed limit is neither recommended nor endorsed. Overall widths will change 0.1 inch (2.5 mm) for each 1/4 inch change in rim width. Minimum dual spacing should be adjusted accordingly. Continental Tire the Americas, LLC reserves the right to change product specifications at any time without notice or obligations. Please consult rim manufacturers load and inflation limits. Never exceed rim manufacturers limits without permission of component manufacturer.

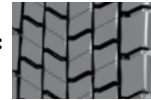
Conti Hybrid HD3



- Fuel efficient tread compound delivers exceptional rolling resistance balanced with mileage.
- Directional tread design with regenerating sipe technologies deliver outstanding traction in tandem axle fitment.
- Optimized contour and balanced footprint distribution provide extended tread life and premium wear performance.
- Built on the Conti 3G Casing for maximum retreadability

Applications: Combined long haul highway and regional tandem drive position.

Tread B:



Tire Size	Load Range	Article Number	Tread Depth (32nds)	Max Speed (MPH)#	Static Loaded Radius IN (MM)	Overall Inflated Diameter IN (MM)	Overall Inflated Width IN (MM)	Loaded Section Width IN (MM)	Approved Rim(s)	Minimum Dual Spacing IN (MM)	Revs Per Mile (KM)	Tire Weight LB (KG)	MAX. LOAD@INFLATION	
													Single	Dual
TUBELESS TIRES ON 15 DEGREE DROP CENTER RIMS														
11R22.5	G	05210150000	27	75	19.7 (500)	42.0 (1067)	11.7 (296)	13.1 (331)	8.25, 7.50	12.5 (318)	493 (306)	130 (59)	6175 105 (2800 720)	5840 105 (2650 720)
11R22.5	H	05210160000	27	75	19.7 (500)	42.0 (1067)	11.7 (296)	13.1 (331)	8.25, 7.50	12.5 (318)	493 (306)	131 (60)	6610 120 (3000 830)	6005 120 (2725 830)
295/75R22.5	G	05210170000	27	75	19.1 (484)	40.6 (1031)	11.7 (298)	12.7 (323)	8.25, 9.00	12.5 (318)	510 (317)	125 (57)	6175 110 (2800 760)	5675 110 (2575 760)
11R24.5	H	05210560000	27	75	20.6 (522)	43.9 (1114)	11.6 (294)	13.0 (330)	8.25, 7.50	12.5 (318)	472 (293)	146 (67)	7160 120 (3250 830)	6610 120 (3000 830)
275/70R22.5* (Tread B)	H	05210920000	22	81	17.6 (447)	38.3 (974)	10.9 (276)	11.3 (287)	8.25, 7.50	12.1 (307)	551 (342)	115 (52)	6940 130 (3150 900)	6395 130 (2900 900)
315/80R22.3 (Tread B)	L	05210860000	25	75	19.7 (500)	43.1 (1096)	12.3 (312)	12.5 (318)	9.00, 9.75	13.8 (351)	490 (305)	155 (71)	9090 130 (4125 900)	8270 130 (3750 900)

Note - Rim listed first is the measuring rim. Minimum Dual Spacing calculated without chains. * - ECE Certified # - Exceeding the lawful speed limit is neither recommended nor endorsed. Overall widths will change 0.1 inch (2.5 mm) for each 1/4 inch change in rim width. Minimum dual spacing should be adjusted accordingly. Continental Tire the Americas, LLC reserves the right to change product specifications at any time without notice or obligations. Please consult rim manufacturers load and inflation limits. Never exceed rim manufacturers limits without permission of component manufacturer.

Conti Hybrid HD3 - 19.5"



- Advanced application-optimized Hybrid tread compound adds up to significant improvements in rolling resistance and mileage.
- Narrowed groove widths result in increased pattern volume which improves wear resistance to guarantee high mileage performance.
- Chamfered Edge reduces deformation amplitude in sidewall and bead area which results in improved rolling resistance and helps lower fuel consumption.

Applications: Long haul/Regional over the highway drive use.

Tread B:



Tire Size	Load Range	Article Number	Tread Depth (32nds)	Max Speed (MPH)#	Static Loaded Radius IN (MM)	Overall Inflated Diameter IN (MM)	Overall Inflated Width IN (MM)	Loaded Section Width IN (MM)	Approved Rim(s)	Minimum Dual Spacing IN (MM)	Revs Per Mile (KM)	Tire Weight LB (KG)	MAX. LOAD@INFLATION	
													Single	Dual
TUBELESS TIRES ON 15 DEGREE DROP CENTER RIMS														
225/70R19.5	G	05990520000	18	87	15.0 (381)	32.0 (813)	8.6 (218)	9.3 (237)	6.00, 6.75	10.0 (254)	647 (402)	66 (30)	3970 110 (1800 760)	3750 110 (1700 760)
245/70R19.5	G	05222240000	20	81	15.4 (391)	33.3 (846)	9.5 (241)	10.4 (264)	7.50, 6.75	11.0 (279)	622 (386)	82 (37)	4540 110 (2060 760)	4410 110 (2000 760)
245/70R19.5	H	05210830000	20	81	15.4 (391)	33.3 (846)	9.5 (241)	10.4 (264)	7.50, 6.75	11.0 (279)	622 (386)	82 (37)	4940 120 (2240 830)	4675 120 (2120 830)
265/70R19.5 (Tread B)	H	05220890000	21	81	15.8 (401)	34.7 (881)	10.3 (262)	10.7 (272)	7.50, 6.75, 8.25	11.2 (286)	613 (381)	86 (39)	5510 115 (2500 790)	5205 115 (2360 790)
285/70R19.5 (Tread B)	H	05220880000	21	81	16.2 (412)	35.9 (911)	11.1 (283)	11.6 (294)	8.25, 7.50, 9.00	12.5 (318)	590 (366)	97 (44)	6610 125 (3000 860)	6175 125 (2800 860)

Note - Rim listed first is the measuring rim. Minimum Dual Spacing calculated without chains. * - ECE Certified. # - Exceeding the lawful speed limit is neither recommended nor endorsed. Overall widths will change 0.1 inch (2.5 mm) for each 1/4 inch change in rim width. Minimum dual spacing should be adjusted accordingly. Continental Tire the Americas, LLC reserves the right to change product specifications at any time without notice or obligations. Please consult rim manufacturers load and inflation limits. Never exceed rim manufacturers limits without permission of component manufacturer.

Conti Hybrid HT3 - 19.5"



- Advanced application-optimized Hybrid tread compound adds up to significant improvements in rolling resistance and mileage.
- Narrowed groove widths result in increased pattern volume which improves wear resistance to provide high mileage performance.
- Low rolling resistance sidewall compound used to reduce heat through friction elimination.

Applications: Long haul/Regional over the highway trailer use.

Tire Size	Load Range	Article Number	Tread Depth (32nds)	Max Speed (MPH)#	Static Loaded Radius IN (MM)	Overall Inflated Diameter IN (MM)	Overall Inflated Width IN (MM)	Loaded Section Width IN (MM)	Approved Rim(s)	Minimum Dual Spacing IN (MM)	Revs Per Mile (KM)	Tire Weight LB (KG)	MAX. LOAD@INFLATION Single Dual	
TUBELESS TIRES ON 15 DEGREE DROP CENTER RIMS														
265/70R19.5	H	05320960000	17	68	15.8 (401)	34.7 (881)	10.3 (262)	10.7 (272)	7.50,6.75,8.25	11.6 (295)	609 (378)	80 (36)	6005 125 (2725 860)	5675 125 (2575 860)
285/70R19.5	J	05320420000	18	68	16.2 (412)	35.9 (911)	11.1 (283)	11.6 (294)	8.25,7.50,9.00	12.5 (318)	590 (366)	93 (42)	7390 130 (3350 900)	6940 130 (3150 900)

Note - Rim listed first is the measuring rim. Minimum Dual Spacing calculated without chains. * - ECE Certified # - Exceeding the lawful speed limit is neither recommended nor endorsed. Overall widths will change 0.1 inch (2.5 mm) for each 1/4 inch change in rim width. Minimum dual spacing should be adjusted accordingly. Continental Tire the Americas, LLC reserves the right to change product specifications at any time without notice or obligations. Please consult rim manufacturers load and inflation limits. Never exceed rim manufacturers limits without permission of component manufacturer.

ContiTread™

Drive Position

HDR2 EP 26/32"

Application: Regional Hauling & Light On/Off, Drive Position



- Advanced, fuel efficient compound provides long original mileage and rolling resistance.
- Optimal power transmission on various road conditions, through an innovative tread compound.
- Unidirectional, arrow shaped tread pattern minimizes typical drive tire wear effects.

ARTICLE #	WIDTH	DEPTH
18208110000	215	26/32"
18208120000	225	26/32"
18208130000	235	26/32"
18208140000	245	26/32"

HDR1 EP 22/32"

Application: Regional hauling & light On/Off, Drive position



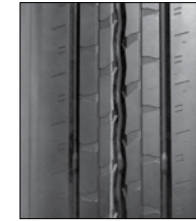
- Advanced, fuel efficient compound provides long original mileage and rolling resistance.
- Open shoulder tread design provides excellent wet/dry traction, resists irregular wear and reduces stone retention.
- Innovative lug angle provides outstanding traction throughout the life of the original tire.

ARTICLE #	WIDTH	DEPTH
18207700000	215	22/32"
18207710000	225	22/32"
18207720000	235	22/32"
18207730000	245	22/32"

Trailer Position

Hybrid HT3 16/32"

Application: Long Haul to Regional, Trailer Position



- Winged tread for use in high scrub applications, particularly spread-axle and multi-axle.
- Durable high mileage compounding.
- Pyramidal stone ejection system integrated into the center groove for added casing protection.

ARTICLE #	WIDTH	DEPTH
18214630000	210	16/32"
18214640000	220	16/32"
18214650000	230	16/32"

HTR2 SA 16/32"

Application: Local and Long haul, all-position service

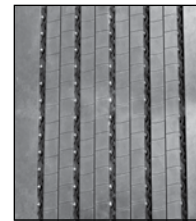


- High mileage achieved through precise balance of tread compound and geometry.
- Winged tread for use in high scrub applications.

ARTICLE #	WIDTH	DEPTH
18213680000	200/230	16/32"
18207530000	210/240	16/32"
18207540000	220/250	16/32"
18207550000	230/260	16/32"
18207560000	240/270	16/32"
18207570000	250/280	16/32"
18207580000	260/290	16/32"
18207590000	270/300	16/32"
18207600000	290/320	16/32"

HTL1 13/32"

Application: Regional/Long Haul, SS Trailer Position



- Optimized compound for regional and long haul deliveries.
- Proven 13/32" tread design.
- New solid shoulder design, for durability.
- Patented innovative groove technology leads to minimum stone retention, extending casing life.

ARTICLE #	WIDTH	DEPTH
18214670000	390	13/32"
18214680000	400	13/32"
18214690000	410	13/32"

Regional For Highway and Gravel

Engineered for your application. Tires for Regional use are designed for applications where vehicles spend the majority of their time on pavement, and the rest in on/off road conditions such as gravel. Tires are optimized for high removal mileage and cut-and-chip resistance.

IMPORTANT NOTE:

Product details are subject to change, please visit our website or contact your local sales representative for the most up to date information.



Conti CrossTrac HA3



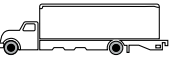
- Rigid belt package with full width top belt and extra sidewall protection for increased durability.
- Zigzag center groove geometry increases the number of biting edges for increased traction.
- Pyramidal stone ejection system for maximum casing protection.
- Built on the innovative Conti 3G Casing for maximum retreadability

Applications: Regional hauling and on/off road, all-position.

Tire Size	Load Range	Article Number	Tread Depth (32nds)	Max Speed (MPH)#	Static Loaded Radius IN (MM)	Overall Inflated Diameter IN (MM)	Overall Inflated Width IN (MM)	Loaded Section Width IN (MM)	Approved Rim(s)	Minimum Dual Spacing IN (MM)	Revs Per Mile (KM)	Tire Weight LB (KG)	MAX. LOAD@INFLATION			
													LBS PSI (KG KPa)	LBS PSI (KG KPa)		
TUBELESS TIRES ON 15 DEGREE DROP CENTER RIMS																
11R22.5	G	05153120000	23	75	19.5 (495)	41.9 (1064)	11.6 (295)	13.0 (330)	8.25, 7.50	12.5 (318)	494 (307)	131 (59)	6175 (2800)	105 (720)	5840 (2650)	105 (720)
11R22.5	H	05153150000	23	75	19.5 (495)	41.9 (1064)	11.6 (295)	13.0 (330)	8.25, 7.50	12.5 (318)	494 (307)	133 (61)	6610 (3000)	120 (830)	6005 (2725)	120 (830)
12R22.5	H	05153190000	23	75	20.2 (513)	42.8 (1086)	11.9 (302)	13.1 (333)	9.00, 8.25	13.7 (348)	484 (301)	144 (65)	7390 (3350)	120 (830)	6780 (3075)	120 (830)
295/75R22.5	G	05153220000	23	75	18.9 (480)	40.2 (1022)	11.8 (299)	12.9 (328)	8.25, 7.50	13.4 (340)	514 (320)	121 (55)	6175 (2800)	110 (760)	5675 (2575)	110 (760)
295/75R22.5	H	05153230000	23	75	18.9 (480)	40.2 (1022)	11.8 (299)	12.9 (328)	8.25, 7.50	13.4 (340)	514 (320)	126 (57)	7160 (3250)	120 (830)	6610 (3000)	120 (830)
11R24.5	G	05153170000	23	75	20.5 (521)	43.8 (1113)	11.6 (295)	13.0 (330)	8.25, 7.50	12.5 (318)	473 (294)	140 (63)	6610 (3000)	105 (720)	6005 (2725)	105 (720)
11R24.5	H	05153180000	23	75	20.5 (521)	43.8 (1113)	11.6 (295)	13.0 (330)	8.25, 7.50	12.5 (318)	473 (294)	143 (65)	7160 (3250)	120 (830)	6610 (3000)	120 (830)

Note - Note - Rim listed first is the measuring rim. Minimum Dual Spacing calculated without chains. # - Exceeding the lawful speed limit is neither recommended nor endorsed. Overall widths will change 0.1 inch (2.5 mm) for each 1/4 inch change in rim width. Minimum dual spacing should be adjusted accordingly. Continental Tire the Americas, LLC reserves the right to change product specifications at any time without notice or obligations. Please consult rim manufacturers load and inflation limits. Never exceed rim manufacturers limits without permission of component manufacturer.

HSR2



- 23/32" deep improved cut and chip resistant tread compound for optimal performance.
- Patented groove geometry for better resistance to cracking and tearing.
- Protective curb rib for high scrub applications.
- Patented innovative groove technology leads to minimum stone retention, extending casing life.

Applications: Regional hauling and on/off road, all-position.

Tire Size	Load Range	Article Number	Tread Depth (32nds)	Max Speed (MPH)#	Static Loaded Radius IN (MM)	Overall Inflated Diameter IN (MM)	Overall Inflated Width IN (MM)	Loaded Section Width IN (MM)	Approved Rim(s)	Minimum Dual Spacing IN (MM)	Revs Per Mile (KM)	Tire Weight LB (KG)	MAX. LOAD@INFLATION			
													LBS PSI (KG KPa)	LBS PSI (KG KPa)		
TUBELESS TIRES ON 15 DEGREE DROP CENTER RIMS																
10R22.5	G	05686570000	20	75	18.8 (478)	40.0 (1016)	10.0 (254)	10.8 (274)	7.50, 6.75, 8.25	11.4 (290)	518 (322)	105 (48)	5675 (2575)	115 (790)	5355 (2430)	115 (790)
11R22.5*	G	05686300000	23	75	19.4 (493)	41.6 (1057)	11.1 (282)	12.0 (305)	8.25	12.5 (318)	498 (309)	121 (55)	6175 (2800)	105 (720)	5840 (2650)	105 (720)
11R22.5*	H	05686310000	23	75	19.4 (493)	41.6 (1057)	11.1 (282)	12.0 (305)	8.25	12.5 (318)	498 (309)	122 (55)	6610 (3000)	120 (830)	6005 (2725)	120 (830)
12R22.5	H	05120880000	23	75	20.1 (511)	42.9 (1090)	11.4 (290)	12.1 (306)	9.00, 8.25	13.5 (343)	482 (300)	133 (60)	7390 (3350)	120 (830)	6780 (3075)	120 (830)
275/80R22.5*	H	05686350000	23	75	18.6 (472)	40.0 (1016)	11.1 (282)	12.6 (320)	8.25	12.5 (318)	518 (322)	117 (53)	7160 (3250)	120 (830)	6610 (3000)	120 (830)
11R24.5*	H	05686330000	23	75	20.4 (518)	43.5 (1105)	11.1 (282)	12.0 (305)	8.25	12.5 (318)	476 (296)	130 (59)	7160 (3250)	120 (830)	6610 (3000)	120 (830)
285/75R24.5*	H	05687020000	23	75	19.4 (493)	41.3 (1049)	10.7 (272)	12.1 (307)	8.25	12.5 (318)	501 (311)	121 (55)	6780 (3075)	120 (830)	6175 (2800)	120 (830)

Note - Rim listed first is the measuring rim. Minimum Dual Spacing calculated without chains. * - ECE Certified. # - Exceeding the lawful speed limit is neither recommended nor endorsed. Overall widths will change 0.1 inch (2.5 mm) for each 1/4 inch change in rim width. Minimum dual spacing should be adjusted accordingly. Continental Tire the Americas, LLC reserves the right to change product specifications at any time without notice or obligations. Please consult rim manufacturers load and inflation limits. Never exceed rim manufacturers limits without permission of component manufacturer.

HSR2 Eco Plus



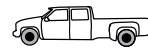
- Advanced tread compounding provides this Eco Plus version with 20% less rolling resistance than the original HSR2.
- 23/32" deep rolling resistant tread compound for long tread life on highway and regional road combined applications.
- Large radial grooves for improved resistance to groove cracking.
- Sidewall with curb rib reduces damage from curbing, cuts and abrasions.
- Patented innovative groove technology leads to minimum stone retention, extending casing life.

Applications: On highway and regional hauling, all-position

Tire Size	Load Range	Article Number	Tread Depth (32nds)	Max Speed (MPH)#	Static Loaded Radius IN (MM)	Overall Inflated Diameter IN (MM)	Overall Inflated Width IN (MM)	Loaded Section Width IN (MM)	Approved Rim(s)	Minimum Dual Spacing IN (MM)	Revs Per Mile (KM)	Tire Weight LB (KG)	MAX. LOAD@INFLATION			
													LBS PSI (KG KPa)	LBS PSI (KG KPa)		
TUBELESS TIRES ON 15 DEGREE DROP CENTER RIMS																
275/80R22.5*	H	05120850000	23	75	18.7 (475)	40.0 (1016)	11.1 (282)	12.6 (320)	8.25, 7.50	12.5 (318)	518 (322)	117 (53)	7160 (3250)	120 (830)	6610 (3000)	120 (830)

Note - Rim listed first is the measuring rim. Minimum Dual Spacing calculated without chains. * - ECE Certified # - Exceeding the lawful speed limit is neither recommended nor endorsed. Overall widths will change 0.1 inch (2.5 mm) for each 1/4 inch change in rim width. Minimum dual spacing should be adjusted accordingly. 315/80R22.5 tires used on 8.25" rims are restricted to a maximum of 7610 lbs at 120 psi. Continental Tire the Americas, LLC reserves the right to change product specifications at any time without notice or obligations. Please consult rim manufacturers load and inflation limits. Never exceed rim manufacturers limits without permission of component manufacturer.

HSR - 19.5"



- Advanced tread compound delivers improved fuel efficiency, increased removal miles and improved resistance to cuts and tears.
- 16/32" all-position tread pattern provides long mileage in regional and local service.
- Aggressive tread design provides excellent lateral stability to minimize squirm, and improve wet handling performance.
- Closed shoulder tread pattern provides even wear and reduced noise.
- Scuff rib to protect against curbing, cuts and abrasions.

Applications: Regional hauling and on/off road, all-position.

Tire Size	Load Range	Article Number	Tread Depth (32nds)	Max Speed (MPH)#	Static Loaded Radius IN (MM)	Overall Inflated Diameter IN (MM)	Overall Inflated Width IN (MM)	Loaded Section Width IN (MM)	Approved Rim(s)	Minimum Dual Spacing IN (MM)	Revs Per Mile (KM)	Tire Weight LB (KG)	MAX. LOAD@INFLATION			
													LBS PSI (KG KPa)	LBS PSI (KG KPa)		
TUBELESS TIRES ON 15 DEGREE DROP CENTER RIMS																
225/70R19.5 *	G	05122180000	16	87	14.9 (378)	31.9 (810)	8.6 (218)	9.5 (241)	6.00, 6.75	10.0 (254)	649 (403)	62 (28)	3970 (1800)	110 (760)	3750 (1700)	110 (760)

Note - Rim listed first is the measuring rim. Minimum Dual Spacing calculated without chains. * - ECE Certified # - Exceeding the lawful speed limit is neither recommended nor endorsed. Overall widths will change 0.1 inch (2.5 mm) for each 1/4 inch change in rim width. Minimum dual spacing should be adjusted accordingly. Continental Tire the Americas, LLC reserves the right to change product specifications at any time without notice or obligations. Please consult rim manufacturers load and inflation limits. Never exceed rim manufacturers limits without permission of component manufacturer.

LSR1- 17.5"



- Multi-rib tread design features excellent wet traction, lateral stability and reduced noise.
- Patented innovative groove technology leads to minimum stone retention, extending casing life.
- Advanced tread compound provides long original mileage in regional applications.

Applications: Regional and urban all-position use.

Tire Size	Load Range	Article Number	Tread Depth (32nds)	Max Speed (MPH)#	Static Loaded Radius IN (MM)	Overall Inflated Diameter IN (MM)	Overall Inflated Width IN (MM)	Loaded Section Width IN (MM)	Approved Rim(s)	Minimum Dual Spacing IN (MM)	Revs Per Mile (KM)	Tire Weight LB (KG)	MAX. LOAD@INFLATION			
													LBS PSI (KG KPa)	LBS PSI (KG KPa)		
TUBELESS TIRES ON 15 DEGREE DROP CENTER RIMS																
10R17.5 *	H	04120910000	17	75	15.7 (398)	33.8 (858)	10.0 (254)	10.3 (262)	7.50, 6.75	11.3 (286)	613 (381)	70 (32)	4675 (2120)	115 (790)	4410 (2000)	115 (790)

Note - Rim listed first is the measuring rim. Minimum Dual Spacing calculated without chains. * - ECE Certified. # - Exceeding the lawful speed limit is neither recommended nor endorsed. Overall widths will change 0.1 inch (2.5 mm) for each 1/4 inch change in rim width. Minimum dual spacing should be adjusted accordingly. Continental Tire the Americas, LLC reserves the right to change product specifications at any time without notice or obligations. Please consult rim manufacturers load and inflation limits. Never exceed rim manufacturers limits without permission of component manufacturer.

HDR2

3G Casing



- Exceptional removal mileage and all-weather traction provided by wide, open shoulder tread design.
- Chamfered tread block geometry to withstand higher drive axle torque with reduced drive tire wear conditions such as tearing and cracking.
- Optimized contour and balanced footprint distribution for extended tread life and product performance.
- Patented groove technology leads to minimal stone retention, extending casing life.

Applications: Regional and long haul drive positions. On/Off highway service.

Tread B:



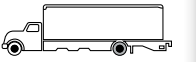
Tire Size	Load Range	Article Number	Tread Depth (32nds)	Max Speed (MPH)#	Static Loaded Radius IN (MM)	Overall Inflated Diameter IN (MM)	Overall Inflated Width IN (MM)	Loaded Section Width IN (MM)	Approved Rim(s)	Minimum Dual Spacing IN (MM)	Revs Per Mile (KM)	Tire Weight LB (KG)	MAX. LOAD@INFLATION	
													LBS PSI (KG KPa)	LBS PSI (KG KPa)
TUBELESS TIRES ON 15 DEGREE DROP CENTER RIMS														
10R22.5	G	05221450000	24	75	19.8 (483)	40.4 (1026)	10.0 (254)	11.0 (278)	7.50, 6.75, 8.25	11.4 (290)	513 (318)	109 (49)	5675 (2575)	115 (790)
11R22.5	G	05220410000	30	75	19.8 (502)	42.2 (1071)	11.6 (295)	13.0 (330)	8.25, 7.50	12.5 (318)	491 (305)	136 (61)	6175 (2800)	105 (720)
11R22.5	H	05220420000	30	75	19.8 (502)	42.2 (1071)	11.6 (295)	13.0 (330)	8.25, 7.50	12.5 (318)	491 (305)	137 (62)	6610 (3000)	120 (830)
12R22.5	H	05221270000	30	75	20.3 (515)	43.2 (1098)	11.9 (301)	13.2 (335)	9.00, 8.25	13.5 (343)	497 (298)	148 (67)	7390 (3350)	120 (830)
295/75R22.5	G	05220440000	30	75	19.0 (483)	40.7 (1034)	11.5 (292)	12.9 (328)	8.25, 9.00	12.5 (318)	509 (316)	128 (58)	6175 (2800)	110 (760)
295/75R22.5	H	05220450000	30	75	19.0 (483)	40.7 (1034)	11.5 (292)	12.9 (328)	8.25, 9.00	12.5 (318)	509 (316)	129 (58)	7160 (3250)	120 (830)
11R24.5	H	05220430000	30	75	20.6 (524)	44.2 (1123)	11.6 (295)	13.0 (330)	8.25, 7.50	12.5 (318)	468 (291)	147 (66)	7160 (3250)	120 (830)
285/75R24.5	H	05220470000	30	75	19.6 (498)	42.1 (1069)	11.5 (292)	12.9 (328)	8.25	12.5 (318)	492 (306)	135 (61)	6780 (3075)	120 (830)
315/80R22.5 * (Tread B)	L	05223660000	28	75	19.7 (500)	43.1 (1096)	12.3 (312)	12.5 (318)	9.00, 9.75	13.8 (351)	491 (305)	152 (69)	9090 (4125)	130 (900)

Note - Rim listed first is the measuring rim. Minimum Dual Spacing calculated without chains. * - ECE Certified # - Exceeding the lawful speed limit is neither recommended nor endorsed. Overall widths will change 0.1 inch (2.5 mm) for each 1/4 inch change in rim width. Minimum dual spacing should be adjusted accordingly. 315/80R22.5 tires used on 8.25" rims are restricted to a maximum of 7610 lbs at 120 psi. Continental Tire the Americas, LLC reserves the right to change product specifications at any time without notice or obligations. Please consult rim manufacturers load and inflation limits. Never exceed rim manufacturers limits without permission of component manufacturer.

HDR2 Eco Plus



3G Casing



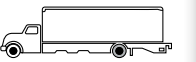
- Advanced tread compounding provides this Eco Plus version with 20% less rolling resistance than the HDR2.
- 30/32" tread is compounded for low rolling resistance with long tread life used on highway and regional roads.
- Open shoulder tread design provides excellent wet/dry traction while resisting irregular wear.
- Innovative lug angles minimize stone retention and casing penetrations, improving retreadability.
- Built on the Conti3G casing for maximum retreadability

Applications: Drive position, regional hauling on highway service.

Tire Size	Load Range	Article Number	Tread Depth (32nds)	Max Speed (MPH)#	Static Loaded Radius IN (MM)	Overall Inflated Diameter IN (MM)	Overall Inflated Width IN (MM)	Loaded Section Width IN (MM)	Approved Rim(s)	Minimum Dual Spacing IN (MM)	Revs Per Mile (KM)	Tire Weight LB (KG)	MAX. LOAD@INFLATION	
													LBS PSI (KG KPa)	LBS PSI (KG KPa)
TUBELESS TIRES ON 15 DEGREE DROP CENTER RIMS														
11R22.5	G	05221540000	30	75	19.8 (502)	42.2 (1071)	11.6 (295)	13.0 (330)	8.25, 7.50	12.5 (318)	491 (305)	136 (61)	6175 (2800)	105 (720)
295/75R22.5	G	05220650000	30	75	19.0 (483)	40.7 (1034)	11.5 (292)	12.9 (328)	8.25, 9.00	12.5 (318)	509 (316)	128 (58)	6175 (2800)	110 (760)

Note - Rim listed first is the measuring rim. Minimum Dual Spacing calculated without chains. * - ECE Certified # - Exceeding the lawful speed limit is neither recommended nor endorsed. Overall widths will change 0.1 inch (2.5 mm) for each 1/4 inch change in rim width. Minimum dual spacing should be adjusted accordingly. 315/80R22.5 tires used on 8.25" rims are restricted to a maximum of 7610 lbs at 120 psi. Continental Tire the Americas, LLC reserves the right to change product specifications at any time without notice or obligations. Please consult rim manufacturers load and inflation limits. Never exceed rim manufacturers limits without permission of component manufacturer.

HDR



- Multi-service tread compound for local and long haul service.
- Offset center tread blocks provide excellent all weather traction.
- Tapered tread grooves reduce stone retention for long casing life and multiple retreats.

Applications: Drive position, short and long haul. On/off highway service (depending on conditions).

Tire Size	Load Range	Article Number	Tread Depth (32nds)	Max Speed (MPH)#	Static Loaded Radius IN (MM)	Overall Inflated Diameter IN (MM)	Overall Inflated Width IN (MM)	Loaded Section Width IN (MM)	Approved Rim(s)	Minimum Dual Spacing IN (MM)	Revs Per Mile (KM)	Tire Weight LB (KG)	MAX. LOAD@INFLATION	
													LBS PSI (KG KPa)	LBS PSI (KG KPa)
TUBELESS TIRES ON 15 DEGREE DROP CENTER RIMS														
255/70R22.5 *	H	05223330000	26	81	17.3 (439)	37.0 (940)	10.0 (255)	10.8 (274)	8.25, 7.50	11.3 (287)	559 (347)	97 (44)	5510 (2500)	120 (830)

Note - Rim listed first is the measuring rim. Minimum Dual Spacing calculated without chains. * - ECE Certified # - Exceeding the lawful speed limit is neither recommended nor endorsed. Overall widths will change 0.1 inch (2.5 mm) for each 1/4 inch change in rim width. Minimum dual spacing should be adjusted accordingly. Continental Tire the Americas, LLC reserves the right to change product specifications at any time without notice or obligations. Please consult rim manufacturers load and inflation limits. Never exceed rim manufacturers limits without permission of component manufacturer.

HDR - 19.5"



- Advanced tread compound delivers improved fuel efficiency, increased removal miles and improved resistance to cuts and tears.
- 18/32" tread pattern provides excellent traction and long mileage in regional and local service.
- Aggressive tread design provides excellent lateral stability to minimize squirm and improve wet handling performance.
- Open shoulder tread pattern with tie-bar provides even tread wear along with reduced noise and improved traction.

Applications: Regional hauling and on/off road, drive position use.

Tire Size	Load Range	Article Number	Tread Depth (32nds)	Max Speed (MPH)#	Static Loaded Radius IN (MM)	Overall Inflated Diameter IN (MM)	Overall Inflated Width IN (MM)	Loaded Section Width IN (MM)	Approved Rim(s)	Minimum Dual Spacing IN (MM)	Revs Per Mile (KM)	Tire Weight LB (KG)	MAX. LOAD@INFLATION	
													LBS PSI (KG KPa)	LBS PSI (KG KPa)
TUBELESS TIRES ON 15 DEGREE DROP CENTER RIMS														
225/70R19.5 *	G	05221460000	18	87	15.0 (381)	32.0 (813)	8.6 (218)	9.4 (239)	6.00, 6.75	10.0 (254)	647 (402)	62 (28)	3970 110 (1800 760)	3750 110 (1700 760)

Note - Rim listed first is the measuring rim. Minimum Dual Spacing calculated without chains. * - ECE Certified # - Exceeding the lawful speed limit is neither recommended nor endorsed. Overall widths will change 0.1 inch (2.5 mm) for each 1/4 inch change in rim width. Minimum dual spacing should be adjusted accordingly. Continental Tire the Americas, LLC reserves the right to change product specifications at any time without notice or obligations. Please consult rim manufacturers load and inflation limits. Never exceed rim manufacturers limits without permission of component manufacturer.

HTR2



- High mileage achieved through precise balance of compound and tread geometry.
- Increased fuel efficiency due to optimized tread pattern and reduced tire weight.
- Tread pattern designed for increased stability and reduced noise.
- Patented innovative groove technology leads to minimum stone retention, extending casing life

Applications: Local and long haul, all-position service.

Tire Size	Load Range	Article Number	Tread Depth (32nds)	Max Speed (MPH)#	Static Loaded Radius IN (MM)	Overall Inflated Diameter IN (MM)	Overall Inflated Width IN (MM)	Loaded Section Width IN (MM)	Approved Rim(s)	Minimum Dual Spacing IN (MM)	Revs Per Mile (KM)	Tire Weight LB (KG)	MAX. LOAD@INFLATION	
													LBS PSI (KG KPa)	LBS PSI (KG KPa)
TUBELESS TIRES ON 15 DEGREE DROP CENTER RIMS														
385/65R22.5	L	05320080000	21	68	19.5 (495)	42.0 (1067)	14.8 (376)	16.3 (414)	11.75, 12.25	NA	493 (306)	165 (75)	9920 130 (4500 900)	NA
425/65R22.5	L	05320260000	22	68	20.3 (515)	44.3 (1126)	16.6 (422)	18.0 (457)	13.00, 14.00, 12.25	NA	467 (290)	181 (82)	11,400 120 (5150 830)	NA

Note - Rim listed first is the measuring rim. Minimum Dual Spacing calculated without chains. These specifications subject to change without notice. * - ECE Certified. # - Exceeding the lawful speed limit is neither recommended nor endorsed. Overall widths will change 0.1 inch (2.5 mm) for each 1/4 inch change in rim width. Minimum dual spacing should be adjusted accordingly. Continental Tire the Americas, LLC reserves the right to change product specifications at any time without notice or obligations. Please consult rim manufacturers load and inflation limits. Never exceed rim manufacturers limits without permission of component manufacturer.

HTR2 - 17.5"



- Robust tread compound engineered to protect against cutting and chipping.
- Innovative groove geometry designed to prevent stone retention and drilling.
- Wide tread and shoulder ribs for improved wear and increased scuff resistance.

Applications: Trailer and pusher positions.

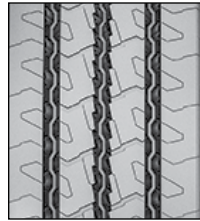
Tire Size	Load Range	Article Number	Tread Depth (32nds)	Max Speed (MPH)#	Static Loaded Radius IN (MM)	Overall Inflated Diameter IN (MM)	Overall Inflated Width IN (MM)	Loaded Section Width IN (MM)	Approved Rim(s)	Minimum Dual Spacing IN (MM)	Revs Per Mile (KM)	Tire Weight LB (KG)	MAX. LOAD@INFLATION	
													LBS PSI (KG KPa)	LBS PSI (KG KPa)
TUBELESS TIRES ON 15 DEGREE DROP CENTER RIMS														
215/75R17.5 *	H	04920140000	16	68	14.1 (359)	30.2 (767)	8.3 (211)	8.6 (220)	6.00, 6.75	9.4 (239)	688 (427)	60 (27)	4805 125 (2180 860)	4540 125 (2060 860)
235/75R17.5 *	H	04920110000	16	68	14.7 (373)	31.4 (797)	9.2 (233)	9.5 (242)	6.75, 7.50	10.3 (262)	662 (412)	72 (33)	6005 125 (2725 860)	5675 125 (2575 860)

Note - Rim listed first is the measuring rim. Minimum Dual Spacing calculated without chains. * - ECE Certified # - Exceeding the lawful speed limit is neither recommended nor endorsed. Overall widths will change 0.1 inch (2.5 mm) for each 1/4 inch change in rim width. Minimum dual spacing should be adjusted accordingly. Continental Tire the Americas, LLC reserves the right to change product specifications at any time without notice or obligations. Please consult rim manufacturers load and inflation limits. Never exceed rim manufacturers limits without permission of component manufacturer.

Conti Tread™

All Position

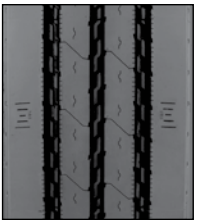
CrossTracHA3 20/32" Application: Regional Hauling & On/Off, All Position



- Zigzag center groove geometry increases the number of biting edges for increased traction.
- Pyramidal stone ejectors in all tread grooves to stop stone retention for long casing life.
- Durable compounding for mileage.

ARTICLE #	WIDTH	DEPTH
18214990000	190	20/32"
18215000000	200	20/32"
18215010000	210	20/32"
18215020000	220	20/32"
18215030000	230	20/32"
18215040000	240	20/32"

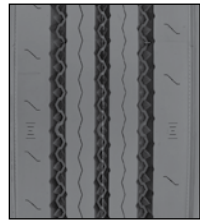
HSR2 Application: Regional Hauling & On/Off, All Position



- Optimized cut and chip resistant tread compound.
- Patented groove geometry for better resistance to cracking and tearing and minimum stone retention.

ARTICLE #	WIDTH	DEPTH
18310500000	200	18/32"
18310510000	215	20/32"
18310520000	225	20/32"
18310530000	235	20/32"

HSR Application: Regional Hauling & On/Off, All Position



- Shallower cut and chip resistant tread for long tread life.
- Pyramidal stone ejectors in all tread grooves to stop stone retention for long casing life.
- Robust shoulder rib for long tread life.

ARTICLE #	WIDTH	DEPTH
18208610000	185	18/32"
18207940000	195	18/32"
18204780000	215	18/32"
18204790000	225	18/32"
18204800000	235	18/32"
18204810000	245	18/32"
18310610000	260	18/32"
18204730000	215	23/32"
18204740000	225	23/32"
18204750000	235	23/32"
18204760000	245	23/32"
18310600000	260	23/32"

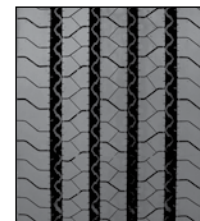
HSR 16/32" Application: Regional Hauling & On/Off, All Position



- 16/32" cut and chip resistant tread for long tread life.
- Aggressive tread design provides excellent lateral stability to minimize squirm, and improve wet handling performance.
- Closed shoulder to protect against curbing, cuts and abrasions.

ARTICLE #	WIDTH	DEPTH
18310030000	180	16/32"
18310460000	195	16/32"

HSR1 16/32" Application: All Position, Short and Long Haul, On/Off Highway Service (depending on conditions)



- Tread compound design to provide long life in regional applications.
- Patented innovative groove technology leads to minimum stone retention, extending casing life.
- Tread pattern designed for excellent wet traction and reduced noise.

ARTICLE #	WIDTH	DEPTH
18211270000	205	16/32"
18310020000	215	16/32"
18207900000	225	16/32"
18207910000	235	16/32"

Conti Tread™

Drive Position

HDR2 Application: Regional Hauling & Light On/Off, Drive Position



- Cut and tear resistant tread compound for excellent wear in regional and light On/Off applications.
- Optimal power transmission on various road conditions, through an innovative tread compound.
- Unidirectional, arrow shaped tread pattern minimizes typical drive tire wear effects.

ARTICLE #	WIDTH	DEPTH
18208690000	185	22/32"
18215770000	195	22/32"
18208710000	205	26/32"
18215790000	215	26/32"
18315120000	225	26/32"
18215810000	235	26/32"
18215820000	245	26/32"

HDR2 EP 26/32" Application: Regional Hauling & Light On/Off, Drive Position



- Advanced, fuel efficient compound provides long original mileage and rolling resistance.
- Optimal power transmission on various road conditions, through an innovative tread compound.
- Unidirectional, arrow shaped tread pattern minimizes typical drive tire wear effects.

ARTICLE #	WIDTH	DEPTH
18208110000	215	26/32"
18208120000	225	26/32"
18208130000	235	26/32"
18208140000	245	26/32"

HDR1 Application: Regional Hauling & Light On/Off, Drive Position



- Cut and tear resistant tread compound for excellent wear in regional and light on/off applications.
- Open shoulder tread design provides excellent wet/dry traction, resists irregular wear and reduces stone retention.
- Innovative lug angle provides outstanding traction throughout the life of the original tire.

ARTICLE #	WIDTH	DEPTH
18209340000	160	16/32"
18209350000	170	16/32"
18215620000	180	16/32"
18215630000	190	16/32"
18215640000	200	16/32"
18207860000	215	16/32"
18215660000	190	20/32"
18215670000	200	20/32"
18215680000	215	22/32"
18215690000	225	22/32"
18215700000	235	22/32"
18207820000	245	22/32"
18215720000	215	26/32"
18215730000	225	26/32"
18215740000	235	26/32"
18208870000	245	26/32"

HDR1 EP 22/32" Application: Regional hauling & light On/Off, Drive position



- Advanced, fuel efficient compound provides long original mileage and rolling resistance.
- Open shoulder tread design provides excellent wet/dry traction, resists irregular wear and reduces stone retention.
- Innovative lug angle provides outstanding traction throughout the life of the original tire.

ARTICLE #	WIDTH	DEPTH
18207700000	215	22/32"
18207710000	225	22/32"
18207720000	235	22/32"
18207730000	245	22/32"

On/Off Road For Additional Durability

Engineered for your application. Tires for On/Off Road use are designed for vocational applications such as utility trucks, concrete mixers, and dump trucks, where they spend some time on the pavement but are also likely to encounter curbs, stones, debris, and tight turns. Tires are optimized for durability and traction, as well as minimal stone retention and cut-and-tear resistance.

IMPORTANT NOTE:

Product details are subject to change, please visit our website or contact your local sales representative for the most up to date information.



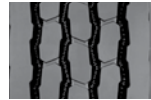
HSC1



- Wide tread and shoulder ribs for improved wear and increased performance.
- Tread pattern and compound integrated for optimal original mileage.
- Optimized contour ensures higher load reserves and less deformation.
- Improved bead construction for structural durability and extended product life.
- Patented tread pattern and contour provide stable casing value through reduced stone retention and improved impact resistance.

Applications: Coal haulers, logging, construction and other all-position service.

Tread B:



Tire Size	Load Range	Article Number	Tread Depth (32nds)	Max Speed (MPH)#	Static Loaded Radius IN (MM)	Overall Inflated Diameter IN (MM)	Overall Inflated Width IN (MM)	Loaded Section Width IN (MM)	Approved Rim(s)	Minimum Dual Spacing IN (MM)	Revs Per Mile (KM)	Tire Weight LB (KG)	MAX. LOAD@INFLATION			
													Single LBS PSI (KG KPa)	Dual LBS PSI (KG KPa)		
TUBELESS TIRES ON 15 DEGREE DROP CENTER RIMS																
11R22.5*	H	05686530000	24	68	19.6 (499)	41.7 (1059)	11.2 (284)	12.2 (310)	8.25, 7.50	12.5 (318)	496 (308)	131 (59)	6610 (3000)	120 (830)	6005 (2725)	120 (830)
12R22.5	H	05686550000	24	68	20.2 (512)	43.0 (1092)	11.4 (290)	12.1 (306)	9.00, 8.25	13.5 (343)	482 (299)	138 (63)	7390 (3350)	120 (830)	6780 (3075)	120 (830)
315/80R22.5 (Tread B)	L	05152990000	23	68	19.8 (502)	42.7 (1086)	12.5 (318)	13.8 (351)	9.00, 8.25	13.8 (351)	484 (301)	162 (73)	10,000 (4540)	130 (900)	9090 (4125)	130 (900)
11R24.5	H	05686540000	24	68	20.6 (524)	43.9 (1115)	11.2 (284)	12.2 (310)	8.25, 7.50	12.5 (318)	472 (293)	135 (61)	7160 (3250)	120 (830)	6610 (3000)	120 (830)
12R24.5	H	05686560000	24	68	21.1 (535)	45.0 (1142)	11.4 (290)	12.6 (319)	9.00, 8.25	13.5 (343)	460 (286)	149 (67)	7830 (3550)	120 (830)	7160 (3250)	120 (830)

Note - Rim listed first is the measuring rim. Minimum Dual Spacing calculated without chains. * - ECE Certified # - Exceeding the lawful speed limit is neither recommended nor endorsed. Overall widths will change 0.1 inch (2.5 mm) for each 1/4 inch change in rim width. Minimum dual spacing should be adjusted accordingly. Continental Tire the Americas, LLC reserves the right to change product specifications at any time without notice or obligations. Please consult rim manufacturers load and inflation limits. Never exceed rim manufacturers limits without permission of component manufacturer.

HDC1



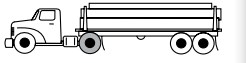
- 32/32" tread pattern and compound integrated for superior original mileage and traction.
- Optimized contour ensures higher load reserves and less deformation.
- Patented tread pattern and contour provide stable casing value through reduced stone retention and improved impact resistance.

Applications: Construction, coal haulers, logging, waste haulers and other on/off highway service.

Tire Size	Load Range	Article Number	Tread Depth (32nds)	Max Speed (MPH)#	Static Loaded Radius IN (MM)	Overall Inflated Diameter IN (MM)	Overall Inflated Width IN (MM)	Loaded Section Width IN (MM)	Approved Rim(s)	Minimum Dual Spacing IN (MM)	Revs Per Mile (KM)	Tire Weight LB (KG)	MAX. LOAD@INFLATION			
													Single LBS PSI (KG KPa)	Dual LBS PSI (KG KPa)		
TUBELESS TIRES ON 15 DEGREE DROP CENTER RIMS																
11R22.5	H	05687040000	32	68	19.7 (500)	42.4 (1077)	11.1 (282)	12.2 (310)	8.25, 7.50	12.5 (318)	488 (303)	130 (59)	6610 (3000)	120 (830)	6005 (2725)	120 (830)
11R24.5	H	05687050000	32	68	20.7 (526)	44.4 (1128)	11.1 (282)	12.2 (310)	8.25, 7.50	12.5 (318)	466 (290)	139 (63)	7160 (3250)	120 (830)	6610 (3000)	120 (830)

Note - Rim listed first is the measuring rim. Minimum Dual Spacing calculated without chains. * - ECE Certified # - Exceeding the lawful speed limit is neither recommended nor endorsed. Overall widths will change 0.1 inch (2.5 mm) for each 1/4 inch change in rim width. Minimum dual spacing should be adjusted accordingly. Continental Tire the Americas, LLC reserves the right to change product specifications at any time without notice or obligations. Please consult rim manufacturers load and inflation limits. Never exceed rim manufacturers limits without permission of component manufacturer.

HDC1 HT



3G Casing

- Rigid belt package with full width top belt and extra sidewall protection for increased durability.
- Diamond shaped tread lug design and shoulder notches are optimal for chaining.
- Alternating groove geometry and stone bumper system for maximum stone ejection.
- Built on the innovative Conti 3G Casing for maximum retreadability.

Applications: Severe service on/off road drive position.

Tire Size	Load Range	Article Number	Tread Depth (32nds)	Max Speed (MPH)#	Static Loaded Radius IN (MM)	Overall Inflated Diameter IN (MM)	Overall Inflated Width IN (MM)	Loaded Section Width IN (MM)	Approved Rim(s)	Minimum Dual Spacing IN (MM)	Revs Per Mile (KM)	Tire Weight LB (KG)	MAX. LOAD@INFLATION			
													Single LBS PSI (KG KPa)	Dual LBS PSI (KG KPa)		
TUBELESS TIRES ON 15 DEGREE DROP CENTER RIMS																
11R22.5	H	05250950000	32	68	19.9 (505)	42.2 (1072)	11.6 (295)	13.0 (330)	8.25	12.5 (318)	491 (305)	138 (63)	6610 (3000)	120 (830)	6005 (2725)	120 (830)
11R24.5	H	05250810000	32	68	20.7 (526)	44.2 (1123)	11.6 (295)	12.5 (318)	8.25	12.5 (318)	468 (291)	150 (68)	7160 (3250)	120 (830)	6610 (3000)	120 (830)

Note - Rim listed first is the measuring rim. Minimum Dual Spacing calculated without chains. * - ECE Certified # - Exceeding the lawful speed limit is neither recommended nor endorsed. Overall widths will change 0.1 inch (2.5 mm) for each 1/4 inch change in rim width. Minimum dual spacing should be adjusted accordingly. Continental Tire the Americas, LLC reserves the right to change product specifications at any time without notice or obligations. Please consult rim manufacturers load and inflation limits. Never exceed rim manufacturers limits without permission of component manufacturer.

HTC1



- Aggressive multi-service, all-position tread pattern provides excellent traction.
- Cut and tear resistant tread compound for long tread life in on/off road conditions.
- Rugged casing design resists casing penetrations and damage, allowing multiple retreads.
- Outstanding self-cleaning properties ensure a long service life.

Applications: Wide base, all-position fitment for on/off, mixed service applications.

Tire Size	Load Range	Article Number	Tread Depth (32nds)	Max Speed (MPH)#	Static Loaded Radius IN (MM)	Overall Inflated Diameter IN (MM)	Overall Inflated Width IN (MM)	Loaded Section Width IN (MM)	Approved Rim(s)	Minimum Dual Spacing IN (MM)	Revs Per Mile (KM)	Tire Weight LB (KG)	MAX. LOAD@INFLATION		
													Single LBS PSI (KG KPa)	Dual LBS PSI (KG KPa)	
TUBELESS TIRES ON 15 DEGREE DROP CENTER RIMS															
385/65R22.5 *	L	05350090000	22	68	19.5 (495)	42.0 (1067)	14.7 (373)	16.2 (411)	12.25, 11.75	NA	493 (306)	167 (76)	9920 (4500)	130 (900)	NA
425/65R22.5	L	05350100000	24	68	20.4 (517)	44.5 (1130)	16.6 (422)	18.0 (457)	12.25, 13.00, 14.00	NA	465 (289)	183 (83)	11,400 (5150)	120 (830)	NA
445/65R22.5 *	L	05350190000	22	68	20.9 (530)	45.2 (1148)	17.4 (441)	18.6 (472)	13.00, 14.00	NA	462 (287)	210 (95)	12,800 (5800)	120 (830)	NA

Note - Rim listed first is the measuring rim. * - ECE Certified # - Exceeding the lawful speed limit is neither recommended nor endorsed. Overall widths will change 0.1 inch (2.5 mm) for each 1/4 inch change in rim width. Minimum dual spacing should be adjusted accordingly. Continental Tire the Americas, LLC reserves the right to change product specifications at any time without notice or obligations. Please consult rim manufacturers load and inflation limits. Never exceed rim manufacturers limits without permission of component manufacturer.

HTC



- Aggressive multi-service, all-position tread pattern provides excellent traction in on/off road service.
- Cut and tear resistant tread compound for long tread life in on/off road conditions.
- Thick undertread resists casing penetration and damage for multiple retreads.

Applications: All-position fitment in on/off highway service.

Tire Size	Load Range	Article Number	Tread Depth (32nds)	Max Speed (MPH)#	Static Loaded Radius IN (MM)	Overall Inflated Diameter IN (MM)	Overall Inflated Width IN (MM)	Loaded Section Width IN (MM)	Approved Rim(s)	Minimum Dual Spacing IN (MM)	Revs Per Mile (KM)	Tire Weight LB (KG)	MAX. LOAD@INFLATION			
													Single	Dual		
													LBS PSI (KG KPa)	LBS PSI (KG KPa)		
TUBELESS TIRES ON 15 DEGREE DROP CENTER RIMS																
275/70R22.5 *	J	05350390000	21	62	17.6 (447)	38.3 (974)	10.8 (275)	11.3 (287)	8.25, 7.50	12.2 (311)	551 (342)	108 (49)	6940 (3150)	125 (860)	6395 (2900)	125 (860)

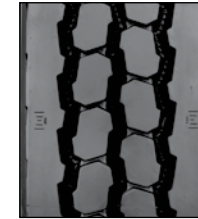
Note - Rim listed first is the measuring rim. * - ECE Certified # - Exceeding the lawful speed limit is neither recommended nor endorsed. Overall widths will change 0.1 inch (2.5 mm) for each 1/4 inch change in rim width. Minimum dual spacing should be adjusted accordingly. Continental Tire the Americas, LLC reserves the right to change product specifications at any time without notice or obligations. Please consult rim manufacturers load and inflation limits. Never exceed rim manufacturers limits without permission of component manufacturer.

ContiTread™

All Position

HSC1 24/32"

Application: Coal haulers, logging, construction, waste haulers and other All Position service



- Tread pattern and compound integrated to deliver optimal mileage.
- Wide tread and shoulder ribs improve wear and increase performance.

ARTICLE #	WIDTH	DEPTH
18207080000	215	24/32"
18207090000	225	24/32"
18207100000	235	24/32"
18207110000	245	24/32"
18207120000	255	24/32"

HSC

Application: On/Off Road, All Position



- On/Off-road compound increases resistance to cuts, chips and chunks, reduces the number, and most importantly the depth of any cuts and tears.
- Patented groove technology leads to minimum stone retention, extending casing life.

ARTICLE #	WIDTH	DEPTH
18205480000	215	18/32"
18205490000	225	18/32"
18205500000	235	18/32"
18205820000	245	18/32"
18205830000	255	18/32"
18205510000	215	23/32"
18205520000	225	23/32"
18205530000	235	23/32"
18207640000	245	23/32"

Drive Position

HDC1 26/32"

Application: On/Off & Off the Road, Drive



- On/Off-road compound increases resistance to cuts, chips and chunks, reduces the number, and most importantly the depth of any cuts and tears.
- Aggressive, open shoulder tread design ensures reliable grip and good handling both on and off the road.

ARTICLE #	WIDTH	DEPTH
18207520000	200	26/32"
18206960000	215	26/32"
18206970000	225	26/32"
18206980000	235	26/32"
18206990000	245	26/32"
18207000000	260	26/32"
18207010000	280	26/32"

Trailer Position

HTC1 24/32"

Application: Super Single Fitment for Steer and Trailer Positions



- Aggressive multi-surface, all-position tread pattern provides excellent traction.
- Outstanding self-cleaning properties ensure a long service life.

ARTICLE #	WIDTH	DEPTH
18206760000	320	24/32"
18206770000	350	24/32"

Off-Road & Severe Service For Maximum Durability

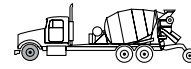
Engineered for your application. Tires for Off-Road and Severe Service use are designed to support construction, mining, logging, and other applications where vehicles travel across challenging surfaces strewn with rocks, nails, and debris. Tires are optimized for durability and high removal mileage, as well as cut-and-tear resistance and traction.

IMPORTANT NOTE:

Product details are subject to change, please visit our website or contact your local sales representative for the most up to date information.



HCS



- High operational safety, long lasting service and outstanding resistance to damage through compounds with extreme resistance to cuts and tears.
- Outstanding traction, even in harshest terrain, thanks to tread pattern structure and geometry.
- Most durable casing design for maximum service life in demanding off-road use, also involving heavy-duty vehicles.

Applications: All-Position service for on/off road, mining and heavy mix axles.

Tire Size	Load Range	Article Number	Tread Depth (32nds)	Max Speed (MPH)#	Static Loaded Radius IN (MM)	Overall Inflated Diameter IN (MM)	Overall Inflated Width IN (MM)	Loaded Section Width IN (MM)	Approved Rim(s)	Minimum Dual Spacing IN (MM)	Revs Per Mile (KM)	Tire Weight LB (KG)	MAX. LOAD@INFLATION		
													LBS PSI (KG KPa)	LBS PSI (KG KPa)	
TUBELESS TIRES ON 15 DEGREE DROP CENTER RIMS															
445/65R22.5*	L	05350330000	27	68	20.9 (532)	45.5 (1156)	17.7 (449)	19.0 (482)	13.00, 14.00	NA	462 (287)	207 (94)	12,800 (5,800)	130 (900)	NA
325/95R24	J	05160330000	40	50	22.4 (568)	49.3 (1252)	12.8 (325)	13.1 (332)	8.50, 9.00	14.2 (360)	430 (267)	204 (92)	9,370 (4,250)	120 (830)	8,540 (3,875)
325/95R24 (NHS)	J	05160340000	40	50	22.4 (568)	49.3 (1252)	12.8 (325)	13.1 (332)	8.50, 9.00	14.2 (360)	430 (267)	204 (92)	9,370 (4,250)	120 (830)	8,540 (3,875)

Note - Rim listed first is the measuring rim. Minimum Dual Spacing calculated without chains. * - ECE Certified # - Exceeding the lawful speed limit is neither recommended nor endorsed. NHS - Not for Highway Use Overall widths will change 0.1 inch (2.5 mm) for each 1/4 inch change in rim width. Minimum dual spacing should be adjusted accordingly. Continental Tire the Americas, LLC reserves the right to change product specifications at any time without notice or obligations. Please consult rim manufacturers load and inflation limits. Never exceed rim manufacturers limits without permission of component manufacturer.

HDO



- Deep 32/32" tread with cut/chip resistant tread provides excellent traction in off-road conditions.
- Patented innovative groove technology leads to minimum stone retention, extending casing life.
- Sidewall profile with curb rib reduces damage from curbing, cuts and abrasions.

Applications: Logging, mining, construction and other aggressive, off-road traction needs.

Tire Size	Load Range	Article Number	Tread Depth (32nds)	Max Speed (MPH)#	Static Loaded Radius IN (MM)	Overall Inflated Diameter IN (MM)	Overall Inflated Width IN (MM)	Loaded Section Width IN (MM)	Approved Rim(s)	Minimum Dual Spacing IN (MM)	Revs Per Mile (KM)	Tire Weight LB (KG)	MAX. LOAD@INFLATION		
													LBS PSI (KG KPa)	LBS PSI (KG KPa)	
TUBELESS TIRES ON 15 DEGREE DROP CENTER RIMS															
11R22.5*	H	05391190000	32	68	19.7 (500)	42.2 (1072)	11.0 (280)	12.0 (306)	8.25, 7.50	12.5 (318)	490 (305)	124 (56)	6,610 (3,000)	120 (830)	6,005 (2,725)

Note - Rim listed first is the measuring rim. Minimum Dual Spacing calculated without chains. * - ECE Certified # - Exceeding the lawful speed limit is neither recommended nor endorsed. Overall widths will change 0.1 inch (2.5 mm) for each 1/4 inch change in rim width. Minimum dual spacing should be adjusted accordingly. Continental Tire the Americas, LLC reserves the right to change product specifications at any time without notice or obligations. Please consult rim manufacturers load and inflation limits. Never exceed rim manufacturers limits without permission of component manufacturer.

Conti Terra HD3 - 19.5"



- Aggressive 19/32" open shoulder tread design provides outstanding traction in off road conditions.
- Technologically advanced cut/tear resistant tread compound to provide long removal miles.
- Circumferential protection rib engineered to withstand severe off road terrain.
- Scuff rib to protect against curbing, cuts and abrasions.

Applications: Off-road severe service drive position

Tire Size	Load Range	Article Number	Tread Depth (32nds)	Max Speed (MPH)#	Static Loaded Radius IN (MM)	Overall Inflated Diameter IN (MM)	Overall Inflated Width IN (MM)	Loaded Section Width IN (MM)	Approved Rim(s)	Minimum Dual Spacing IN (MM)	Revs Per Mile (KM)	Tire Weight LB (KG)	MAX. LOAD@INFLATION		
													LBS PSI (KG KPa)	LBS PSI (KG KPa)	
TUBELESS TIRES ON 15 DEGREE DROP CENTER RIMS															
225/70R19.5*	G	05260080000	19	75	15.4 (390)	32.3 (821)	8.6 (218)	9.4 (239)	6.00, 6.75	10.0 (254)	640 (398)	66 (30)	3,970 (1,800)	110 (760)	3,750 (1,700)
245/70R19.5*	H	05260070000	19	75	15.6 (395)	33.3 (845)	9.7 (245)	10.3 (262)	7.50, 6.75	11.0 (279)	622 (387)	82 (37)	4,940 (2,240)	120 (830)	4,675 (2,120)

Note - Rim listed first is the measuring rim. Minimum Dual Spacing calculated without chains. * - ECE Certified # - Exceeding the lawful speed limit is neither recommended nor endorsed. Overall widths will change 0.1 inch (2.5 mm) for each 1/4 inch change in rim width. Minimum dual spacing should be adjusted accordingly. Continental Tire the Americas, LLC reserves the right to change product specifications at any time without notice or obligations. Please consult rim manufacturers load and inflation limits. Never exceed rim manufacturers limits without permission of component manufacturer.

Waste & Refuse

For Ultimate Retreadability

Engineered for your application. Tires for Waste and Refuse service are designed for urban waste service applications, where traction and cut resistance are essential and vehicles operate under heavy loads with frequent starts and stops. Tires are optimized for hours of service and casing durability to maximize retreading opportunities.

IMPORTANT NOTE:

Product details are subject to change, please visit our website or contact your local sales representative for the most up to date information.



Conti CityService HA3



- Four rib tread pattern with zigzag groove geometry for resistance to high scrub applications.
- Innovative tread compound for outstanding mileage and heat reduction.
- Improved bead design for increased durability and resistance to brake heat.
- Extra sidewall protection for better resistance to curbs, cuts, and other sidewall abrasions.

Applications: Waste transportation and other high scrub, urban applications.

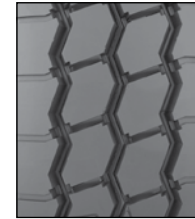
Tire Size	Load Range	Article Number	Tread Depth (32nds)	Max Speed (MPH)#	Static Loaded Radius IN (MM)	Overall Inflated Diameter IN (MM)	Overall Inflated Width IN (MM)	Loaded Section Width IN (MM)	Approved Rim(s)	Minimum Dual Spacing IN (MM)	Revs Per Mile (KM)	Tire Weight LB (KG)	MAX. LOAD@INFLATION	
													Single	Dual
													LBS PSI (KG KPa)	LBS PSI (KG KPa)
TUBELESS TIRES ON 15 DEGREE DROP CENTER RIMS														
315/80R22.5*	L	05140590000	26	68	20.0 (507)	43.1 (1095)	12.4 (314)	13.8 (349)	9.00, 8.25	13.8 (351)	480 (298)	163 (74)	10,000 (4540)	130 (900)

Note - Rim listed first is the measuring rim. Minimum Dual Spacing calculated without chains. * - ECE Certified. # - Exceeding the lawful speed limit is neither recommended nor endorsed. Overall widths will change 0.1 inch (2.5 mm) for each 1/4 inch change in rim width. Minimum dual spacing should be adjusted accordingly. 315/80R22.5 tires used on 8.25" rims are restricted to a maximum of 7610 lbs at 120 psi. Continental Tire the Americas, LLC reserves the right to change product specifications at any time without notice or obligations. Please consult rim manufacturers load and inflation limits. Never exceed rim manufacturers limits without permission of component manufacturer.

ContiTread™

All Position

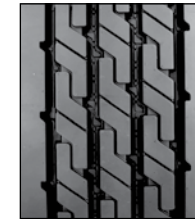
ContiCityServiceHA3 26/32" Application: Waste haul, All Position



- Optimized tread compound for long removal mileage.
- Robust four rib tread design for increased durability in high scrub applications.
- Zig-zag groove geometry engineered specifically for use in waste haul.

ARTICLE #	WIDTH	DEPTH
18211300000	220	26/32"
18211310000	230	26/32"
18211320000	240	26/32"
18210500000	250	26/32"
18210510000	260	26/32"
18210520000	270	26/32"
18210530000	280	26/32"

HSU2 26/32" Application: Regional Hauling & On/Off, All Position, Waste Haul

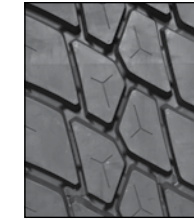


- Shallower cut and chip resistant tread for long tread life.
- Pyramidal stone ejectors in all tread grooves to stop stone retention for long casing life.
- Robust shoulder rib for long tread life.

ARTICLE #	WIDTH	DEPTH
18207160000	250	26/32"
18207170000	260	26/32"
18207180000	270	26/32"
18207190000	280	26/32"

Drive Position

CityService HD3 32/32" Application: Waste, Urban, Construction. Drive position.



- Deep 32/32" tread depth and open shoulder tread design for excellent traction.
- Shoulder notches included in design to prevent heat build-up.
- Chip and chunk resistant compounding for endurance in waste and other high scrub applications.
- Tie bars included to improve wear mileage near end of life.

ARTICLE #	WIDTH	DEPTH
18209150000	220	32/32"
18209160000	230	32/32"
18209170000	240	32/32"
18209180000	250	32/32"
18209190000	260	32/32"
18209200000	270	32/32"
18209210000	280	32/32"

Bus & Coach For Passenger Miles

Engineered for your application. Tires for Bus and Coach use are designed to withstand heat build-up at high speeds under heavy loads. Whether you are operating cross-country or urban routes, these tires will help you deliver your passengers reliably to their destination. Tires are optimized for wet traction and handling, as well as durability, noise, and protection from curbing.

IMPORTANT NOTE:

Product details are subject to change, please visit our website or contact your local sales representative for the most up to date information.



Conti Coach HA3



- Outstanding wet traction and handling through customized tread design.
- Optimized pressure distribution across the footprint provides outstanding mileage and uniform wear.
- Enhanced ride comfort through quiet running tread.
- Durable casing for premium retreadability and enhanced mileage.
- Premium, all-position or steer tire optimized for long distance travel.

Applications: Long haul, over the highway steering and all-position use, for coach and large RV use.

Tire Size	Load Range	Article Number	Tread Depth (32nds)	Max Speed (MPH)#	Static Loaded Radius IN (MM)	Overall Inflated Diameter IN (MM)	Overall Inflated Width IN (MM)	Loaded Section Width IN (MM)	Approved Rim(s)	Minimum Dual Spacing IN (MM)	Revs Per Mile (KM)	Tire Weight LB (KG)	MAX. LOAD@INFLATION	
													Single LBS PSI (KG KPa)	Dual LBS PSI (KG KPa)
TUBELESS TIRES ON 15 DEGREE DROP CENTER RIMS														
315/80R22.5*	L	05651710000	17	75	19.7 (501)	42.4 (1077)	12.4 (315)	13.6 (345)	9.00, 8.25	13.8 (351)	488 (303)	141 (64)	9090 LBS (4125 KG)	130 PSI (900 KPa)

Note - Rim listed first is the measuring rim. Minimum Dual Spacing calculated without chains. These specifications subject to change without notice. * - ECE Certified # - Exceeding the lawful speed limit is neither recommended nor endorsed. Overall widths will change 0.1 inch (2.5 mm) for each 1/4 inch change in rim width. Minimum dual spacing should be adjusted accordingly. 315/80R22.5 tires used on 8.25" rims are restricted to a maximum of 7610 lbs at 120 psi. Continental Tire the Americas, LLC reserves the right to change product specifications at any time without notice or obligations. Please consult rim manufacturers load and inflation limits. Never exceed rim manufacturers limits without permission of component manufacturer.

Conti Urban HA3



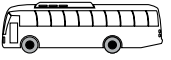
- Increased sidewall gauge for improved resistance against curbing, cuts and abrasions.
- New urban tread compound for prolonged mileage performance with excellent driving characteristics.
- Comfortable ride for driver and passengers through extremely quiet running tread.
- Durable casing for premium retreadability and enhanced mileage.
- Sidewall wear indicator for visual cue to trigger rotation.

Applications: Urban steer/all-position, city bus use.

Tire Size	Load Range	Article Number	Tread Depth (32nds)	Max Speed (MPH)#	Static Loaded Radius IN (MM)	Overall Inflated Diameter IN (MM)	Overall Inflated Width IN (MM)	Loaded Section Width IN (MM)	Approved Rim(s)	Minimum Dual Spacing IN (MM)	Revs Per Mile (KM)	Tire Weight LB (KG)	MAX. LOAD@INFLATION	
													Single LBS PSI (KG KPa)	Dual LBS PSI (KG KPa)
TUBELESS TIRES ON 15 DEGREE DROP CENTER RIMS														
305/70R22.5*	L	05140960000	23	68	18.6 (473)	39.9 (1014)	11.6 (294)	12.6 (320)	9.00, 8.25	13.5 (343)	519 (322)	130 (59)	7830 LBS (3550 KG)	130 PSI (900 KPa)

Note - Rim listed first is the measuring rim. Minimum Dual Spacing calculated without chains. These specifications subject to change without notice. * - ECE Certified # - Exceeding the lawful speed limit is neither recommended nor endorsed. Overall widths will change 0.1 inch (2.5 mm) for each 1/4 inch change in rim width. Minimum dual spacing should be adjusted accordingly. Continental Tire the Americas, LLC reserves the right to change product specifications at any time without notice or obligations. Please consult rim manufacturers load and inflation limits. Never exceed rim manufacturers limits without permission of component manufacturer.

HSR2 SA



- Maximum tire life expectancy and wet traction capabilities through customized tread geometry.
- Even tread wear under all load conditions due to optimized contour and balanced pressure distribution.
- Superb wet traction capabilities with minimum wear through innovative tread compound.
- Ideal for buses and larger recreational vehicles.

Applications: Steer or all-position regional/long haul, for bus or large RV traffic.

Tire Size	Load Range	Article Number	Tread Depth (32nds)	Max Speed (MPH)#	Static Loaded Radius IN (MM)	Overall Inflated Diameter IN (MM)	Overall Inflated Width IN (MM)	Loaded Section Width IN (MM)	Approved Rim(s)	Minimum Dual Spacing IN (MM)	Revs Per Mile (KM)	Tire Weight LB (KG)	MAX. LOAD@INFLATION	
													Single LBS PSI (KG KPa)	Dual LBS PSI (KG KPa)
TUBELESS TIRES ON 15 DEGREE DROP CENTER RIMS														
255/70R22.5*	H	05122460000	18	75	17.1 (434)	36.6 (930)	10.0 (255)	10.8 (274)	8.25, 7.50	11.3 (287)	565 (351)	91 (41)	5510 LBS (2500 KG)	120 PSI (830 KPa)
275/70R22.5*	J	05121290000	18	75	17.8 (451)	37.9 (962)	10.7 (272)	11.6 (295)	8.25	12.4 (315)	547 (340)	115 (52)	6940 LBS (3150 KG)	130 PSI (900 KPa)
295/80R22.5*	H	05123900000	20	81	19.3 (490)	41.4 (1052)	11.8 (300)	13.2 (335)	9.00, 8.25	12.5 (318)	500 (311)	138 (63)	7830 LBS (3550 KG)	120 PSI (830 KPa)
315/80R22.5*	L	05120980000	19	75	19.8 (503)	42.5 (1080)	12.5 (317)	12.5 (317)	9.00, 8.25	13.8 (351)	487 (303)	143 (65)	9090 LBS (4125 KG)	130 PSI (900 KPa)

Note - Rim listed first is the measuring rim. Minimum Dual Spacing calculated without chains. * - ECE Certified # - Exceeding the lawful speed limit is neither recommended nor endorsed. Overall widths will change 0.1 inch (2.5 mm) for each 1/4 inch change in rim width. Minimum dual spacing should be adjusted accordingly. 315/80R22.5 tires used on 8.25" rims are restricted to a maximum of 7610 lbs at 120 psi. Continental Tire the Americas, LLC reserves the right to change product specifications at any time without notice or obligations. Please consult rim manufacturers load and inflation limits. Never exceed rim manufacturers limits without permission of component manufacturer.

Winter

For Cold Weather Performance

Engineered for your application. Tires for Winter use are designed for ultimate performance in severe cold weather conditions such as snow, rain, and ice. Tires are optimized for winter traction.

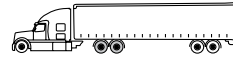
IMPORTANT NOTE:

Product details are subject to change, please visit our website or contact your local sales representative for the most up to date information.



HDW2

3G Casing



- All season tires ensures optimum performance in a variety of winter conditions from ice to deep snow.
- Directional tread design with more than 1000 sipes provides excellent traction and lateral stability.
- Siping engineered with Continental's 3D-Technology.
- More grip on snow and ice thanks to new special winter compound.
- 39% more tread volume compared to HDW by utilizing the all new 3G Casing.

Applications: Drive axle tire for extreme weather conditions.

Tire Size	Load Range	Article Number	Tread Depth (32nds)	Max Speed (MPH)#	Static Loaded Radius IN (MM)	Overall Inflated Diameter IN (MM)	Overall Inflated Width IN (MM)	Loaded Section Width IN (MM)	Approved Rim(s)	Minimum Dual Spacing IN (MM)	Revs Per Mile (KM)	Tire Weight LB (KG)	MAX. LOAD@INFLATION		
													Single	Dual	
													LBS PSI (KG KPa)	LBS PSI (KG KPa)	
TUBELESS TIRES ON 15 DEGREE DROP CENTER RIMS															
11R22.5*	H	05230120000	27	75	19.6 (497)	41.9 (1063)	11.6 (294)	13.0 (329)	8.25	12.5 (318)	495 (307)	135 (61)	6940 (3150)	120 (830)	6395 (2900)
11R24.5*	H	05230130000	27	75	20.6 (522)	43.9 (1114)	11.6 (294)	13.0 (329)	8.25	12.5 (318)	472 (293)	145 (66)	7160 (3250)	120 (830)	6610 (3000)
315/80R22.5*	L	05230490000	27	75	19.7 (500)	42.4 (1076)	12.3 (312)	12.5 (318)	9.00, 8.25	13.8 (351)	491 (305)	137 (62)	9090 (4125)	130 (900)	8270 (3750)

Note - Rim listed first is the measuring rim. Minimum Dual Spacing calculated without chains. * - ECE Certified # - Exceeding the lawful speed limit is neither recommended nor endorsed. Overall widths will change 0.1 inch (2.5 mm) for each 1/4 inch change in rim width. Minimum dual spacing should be adjusted accordingly. Continental Tire the Americas, LLC reserves the right to change product specifications at any time without notice or obligations. Please consult rim manufacturers load and inflation limits. Never exceed rim manufacturers limits without permission of component manufacturer. 315/80R22.5 tires used on 8.25" rims are restricted to a maximum of 7610 lbs.

Conti Scandinavia HD3 - 19.5"



- Deep tread and low void design ensures long removal miles.
- Heavy siping provides numerous gripping edges for excellent traction on wet roads.
- Increased footprint contact area delivers superior traction and stability.
- Open shoulder tread design for increased traction in snow.
- All season compound to deliver excellent traction in all weather conditions without sacrificing removal miles.

Applications: Drive axle tire for extreme weather conditions.

Tire Size	Load Range	Article Number	Tread Depth (32nds)	Max Speed (MPH)#	Static Loaded Radius IN (MM)	Overall Inflated Diameter IN (MM)	Overall Inflated Width IN (MM)	Loaded Section Width IN (MM)	Approved Rim(s)	Minimum Dual Spacing IN (MM)	Revs Per Mile (KM)	Tire Weight LB (KG)	MAX. LOAD@INFLATION		
													Single	Dual	
													LBS PSI (KG KPa)	LBS PSI (KG KPa)	
TUBELESS TIRES ON 15 DEGREE DROP CENTER RIMS															
225/70R19.5*	G	05230340000	19	87	15.1 (383)	32.0 (813)	8.6 (218)	9.3 (236)	6.00, 6.75	10.0 (254)	647 (402)	66 (30)	3970 (1800)	110 (760)	3750 (1700)
245/70R19.5*	H	05230360000	21	87	15.5 (394)	33.3 (845)	9.5 (241)	10.4 (264)	7.50, 6.75	11 (279)	622 (386)	82 (37)	4940 (2240)	120 (830)	4675 (2120)

Note - Rim listed first is the measuring rim. Minimum Dual Spacing calculated without chains. * - ECE Certified # - Exceeding the lawful speed limit is neither recommended nor endorsed. Overall widths will change 0.1 inch (2.5 mm) for each 1/4 inch change in rim width. Minimum dual spacing should be adjusted accordingly. Continental Tire the Americas, LLC reserves the right to change product specifications at any time without notice or obligations. Please consult rim manufacturers load and inflation limits. Never exceed rim manufacturers limits without permission of component manufacturer.

ContiTread™

Drive Position

HDW2 27/32"

Application: Extreme weather conditions, drive position



- All season tire ensures optimum performance in a variety of winter conditions from ice to deep snow.
- Directional tread design with more than 1,000 sipes provides excellent traction and lateral stability in 245 and 260 mm treads.

Tread B

ARTICLE #	WIDTH	DEPTH
18209370000	215	27/32"
18209380000	225	27/32"
18209390000	235	27/32"
18209400000	245 (Tread B)	27/32"
18209410000	260 (Tread B)	27/32"

Scandinavia HD3 25/32"

Application: Heavy snow/mud, drive position



- Directional tread pattern for improved traction.
- Full sipes located on center ribs in center grooves at 22/32" for improved snow evacuation.
- Pocket sipes featured throughout the tread pattern at 13/32"
- Optimized groove geometry for stone trapping resistance.
- Tie bars included to improve wear mileage near end of life.

ARTICLE #	WIDTH	DEPTH
18211340000	210	25/32"
18211350000	220	25/32"
18211360000	230	25/32"
18211370000	240	25/32"

Light Truck 16" All-Steel Casing

Engineered for your application. Commercial tires for Light Truck use are engineered with an all-steel casing to deliver superior mileage and durability in Regional and Super Regional applications. Tires are optimized for cut-and-chip resistance, as well as traction and minimal stone retention.

IMPORTANT NOTE:
Product details are subject to change, please visit our website or contact your local sales representative for the most up to date information.



Medium Truck Load/ Inflation Tables

Safety Warning

Serious Injury May Result From:

- Explosion of tire/rim assembly due to improper mounting. Use safety cage and clip-on extension air hose. Only specially trained persons should mount tires.
- Tire failure due to misapplication/improper inflation/overloading.

**Follow tire manufacturer's instructions.
Check inflation pressure frequently with calibrated gauge.**

Commercial Vehicle Tires

Normal and Wide-Base Sizes on 5 Degree or Flat-Based Rims - Radial Ply

Tire Loads Limits at Various Cold Inflation Pressures

24"		kPa	480	520	550	590	620	660	690	720	760	790	830	
		psi	70	75	80	85	90	95	100	105	110	115	120	
325/95R24	*	dual	kg	2780	2860	3020	3140	3250	3350	3450	3550	3650	3760	3875 (J)
		lbs	6120	6390	6650	6910	7160	7390	7610	7830	8050	8300	8540 (J)	
	single	kg	2870	3020	3170	3300	3440	3650	3770	3890	4000	4130	4250 (J)	
		lbs	6330	6660	6980	7280	7580	8050	8310	8570	8820	9100	9370 (J)	

Conventional Sizes on 15 Degree Drop-Center Rims - Radial Ply

22.5"		kPa	480	520	550	590	620	660	690	720	760	790	830	
		psi	70	75	80	85	90	95	100	105	110	115	120	
10R22.5	*	dual	kg	1750	1830	1910	2000	2080	2160	2240	2300	2360	2430 (G)	--
		lbs	3860	4045	4230	4410	4585	4760	4940	5075	5210	5355 (G)	--	
	single	kg	1850	1940	2030	2120	2200	2280	2360	2430	2500	2575 (G)	--	
		lbs	4080	4280	4480	4675	4850	5025	5205	5360	5515	5675 (G)	--	
11R22.5	**	dual	kg	1990	2080	2160	2250	2360	2460	2560	2650 (G)	2680	2710	2725 (H)
		lbs	4380	4580	4760	4950	5205	5415	5625	5840 (G)	5895	5950	6005 (H)	
	single	kg	2050	2160	2260	2370	2500	2600	2700	2800 (G)	2870	2940	3000 (H)	
		lbs	4530	4770	4990	5220	5510	5730	5950	6175 (G)	6320	6465	6610 (H)	
12R22.5	*	dual	kg	2170	2260	2350	2440	2575	2630	2680	2725 (G)	2840	2960	3075 (H)
		lbs	4780	4990	5190	5390	5675	5785	5895	6005 (G)	6265	6525	6780 (H)	
	single	kg	2240	2360	2470	2580	2725	2820	2910	3000 (G)	3120	3240	3350 (H)	
		lbs	4940	5200	5450	5690	6005	6205	6405	6610 (G)	6870	7130	7390 (H)	

24.5"		kPa	480	520	550	590	620	660	690	720	760	790	830	
		psi	70	75	80	85	90	95	100	105	110	115	120	
11R24.5	*	dual	kg	2110	2210	2300	2390	2500	2580	2660	2725 (G)	2820	2910	3000 (H)
		lbs	4660	4870	5070	5260	5510	5675	5840	6005 (G)	6205	6405	6610 (H)	
	single	kg	2190	2300	2410	2520	2650	2770	2890	3000 (G)	3080	3160	3250 (H)	
		lbs	4820	5070	5310	5550	5840	6095	6350	6610 (G)	6790	6970	7160 (H)	
12R24.5	*	dual	kg	2300	2400	2500	2600	2650	2770	2890	3000 (G)	3080	3160	3250 (H)
		lbs	5080	5300	5520	5730	5840	6095	6350	6610 (G)	6790	6970	7160 (H)	
	single	kg	2380	2500	2630	2740	2900	3020	3140	3250 (G)	3350	3450	3550 (H)	
		lbs	5240	5520	5790	6040	6395	6650	6910	7160 (G)	7380	7600	7830 (H)	

CAUTION: Always use approved tire and rim combinations for diameters and contours.

NOTE: All values are for 65 mph unless otherwise noted, for tire load and inflation at various speeds, see page 48-53.

* Based on TRA

** Based On ETRTO

NOTE: Letters in parentheses denote load range for which boldface loads are maximum.

Commercial Vehicle Tires

Metric and Wide-Base Sizes on 15 Degree Drop-Center Rims - Radial Ply

Tire Loads Limits at Various Cold Inflation Pressures

16"		kPa	240	280	310	340	380	410	450	480	520	550	650
		psi	35	40	45	50	55	60	65	70	75	80	95
LT225/75R16	Dual	kg	635	675	725	800 (C)	845	885	975 (D)	1000	1040	1120 (E)	1250 (F)
	lbs	1365	1500	1630	1765 (C)	1875	1995	2150 (D)	2220	2330	2470 (E)	2755 (F)	
LT235/85R16	Dual	kg	720	770	835	910 (C)	960	1025	1080 (D)	1140	1200	1260 (E)	1400 (F)
	lbs	1545	1700	1845	2006 (C)	2125	2260	2381 (D)	2515	2645	2778 (E)	3085 (F)	
LT245/75R16	Dual	kg	720	770	835	910 (C)	960	1020	1080 (D)	1140	1195	1260 (E)	1400 (F)
	lbs	1545	1700	1845	2006 (C)	2125	2255	2381 (D)	2515	2640	2778 (E)	3085 (F)	
	Single	kg	770	845	920	1000 (C)	1055	1125	1190 (D)	1250	1315	1380 (F)	1550 (F)
	lbs	1700	1870	2030	2205 (C)	2335	2485	2623 (D)	2765	2905	3042 (E)	3415 (F)	

17.5"		kPa	480	520	550	590	620	660	690	720	760	790	830	860
		psi	70	75	80	85	90	95	100	105	110	115	120	125
215/75R17.5	Dual	kg	--	--	1450	1520	1590	1650	1720	1790	1860	1925	1990	2060 (J)
	lbs	--	--	3195	3500	3500	3645	3795	3945	4095	4245	4390	4545 (J)	
235/75R17.5	Dual	kg	--	--	--	--	2020	2140	2200	2325	2380	2440	2575 (J)	
	lbs	--	--	--	--	4450	4720	4855	5120	5250	5380	5675 (J)		
245/70R17.5	Dual	kg	--	--	--	--	2080	2205	2270	2395	2455	2515	2725 (J)	
	lbs	--	--	--	--	4580	4860	5000	5275	5410	5545	6005 (J)		
	Single	kg	--	--	--	--	2020	2140	2200	2325	2380	2440	2575 (J)	
	lbs	--	--	--	--	4450	4720	4855	5120	5250	5380	5675 (J)		
	Single	kg	--	--	--	--	2080	2205	2270	2395	2455	2515	2725 (J)	
	lbs	--	--	--	--	4580	4860	5000	5275	5410	5545	6005 (J)		

19.5"		kPa	480	520	550	590	620	660	690	720	760	790	830	860	900
		psi	70	75	80	85	90	95	100	105	110	115	120	125	130
225/70R19.5	Dual	kg	1230	1300	1360	1410	1470	1550	1580	1640	1700 (G)	1750	1800 (H)	1850	1900 (J)
	lbs	2720	2860	3000	3115	3245	3415	3490	3615	3750	3750 (G)	3855	3970 (H)	4085	4190 (J)
245/70R19.5	Dual	kg	--	--	1550	1590	1660	1750	1790	1850	1950 (G)	--	--	--	--
	lbs	--	--	3415	3515	3655	3860	3940	4075	4410 (G)	--	--	--	--	--
245/70R19.5 (LRH Only)	Dual	kg	--	--	1550	1590	1660	1750	1790	1850	1950	1970	2060 (H)	--	--
	lbs	--	--	3415	3515	3655	3860	3940	4075	4300	4345	4540 (H)	--	--	
265/70R19.5 @81 mph	Dual	kg	1560	1640	1700	1780	1860	1950	2000	2000	2120	2360 (H)	--	--	--
	lbs	3430	3600	3750	3930	4095	4300	4405	4415	4675	5205 (H)	--	--	--	
285/70R19.5 LRH @81 mph	Dual	kg	--	1870	1970	2065	2160	2260	2355	2450	2540	2630	2725 (H)	--	--
	lbs	--	4125	4340	4555	4770	4980	5190	5395	5600	5805	6005 (H)	--	--	
285/70R19.5 LRJ @68 mph	Dual	kg	--	--	--	2240	2345	2450	2550	2650	2750	2850	2950	3050	3150 (J)
	lbs	--	--	--	4940	5170	5400	5625	5850	6070	6290	6510	6730	6940 (J)	
305/70R19.5	Dual	kg	--	--	--	2385	2495	2610	2715	2825	2930	3040	3145	3250	3350 (J)
	lbs	--	--	--	5260	5505	5750	5990	6230	6465	6700	6930	7160	7390 (J)	
	Single	kg	--	--	2060	2120	2200	2300	2370	2450	2575	2620	2725	2900 (J)	
	lbs	--	--	4540	4670	4860	5070	5230	5410	5675	5770	6005	6395 (J)		
	Single	kg	--	--	2240	2330	2420	2500	2610	2700	2800	2870	3000	3150 (J)	
	lbs	--	--	4940	5130	5340	5510	5745	5945	6175	6340	6610	6940 (J)		

22.5"		kPa	480	520	550	590	620	660	690	720	760	790	830	830	900
		psi	70	75	80	85	90	95	100	105	110	115	120	125	130
255/70R22.5	Dual	kg	--	--	1800	1860	1940	2000	2020	2090	2120	2230	2300 (H)	--	--
	lbs	--	--	3970	4110	4275	4410	4455	4610	4675	4915	5070 (H)	--	--	
275/70R22.5	Dual	kg	--	--	1900	1980	2060	2120	2220	2300	2360	2450	2500 (H)	--	--
	lbs	--	--	4190	4370	4550	4675	4895	5065	5205	5400	5510 (H)	--	--	
275/80R22.5	Dual	kg	1860	1950	2060	2130	2220	2300	2390	2470	2575 (G)	2630	2800 (H)	--	--
	lbs	4095	4300	4540	4690	4885	5070	5260	5440	5675 (G)	5795	6175 (H)	--	--	
295/60R22.5 9.00" wheel @65mph	Dual	kg	--	--	--	2070	2155	2265	2345	2424	2535	2615	2720	2795	2900 (J)
	lbs	--	--	--	4565	4750	4995	5170	5345	5590	5765	5995	6160	6395 (J)	
295/60R22.5 9.00" wheel @75mph	Dual	kg	--	--	--	2250	2340	2460	2550	2635	2750	2840	2955	3040	3150 (J)
	lbs	--	--	--	4960	5160	5420	5620	5810	6060	6260	6510	6700	6940 (J)	
295/75R22.5	Dual	kg	1860	1950	2060	2130	2220	2300	2390	2470	2575 (G)	2630	2800 (H)	--	--
	lbs	4095	4300	4540	4690	4885	5070	5260	5440	5675 (G)	5795	6175 (H)	--	--	
295/80R22.5	Dual	kg	2050	2160	2260	2370	2500	2600	2700	2800	2910	3030	3150 (H)	--	--
	lbs	4530	4770	4990	5220	5510	5730	5950	6175	6415	6670	6945 (H)	--	--	
305/70R22.5	Dual	kg	1915	2020	2130	2235	2340	2445	2545	2645	2745	2845	2945	3150 (L)	--
	lbs	4220	4450	4700	4930	5160	5390	5610	5830	6050	6270	6490	6940 (L)	--	
315/80R22.5	Dual	kg	--	--	2575	2650	2750	2900	2970	3070	3150	3270	3450	3600	3750 (L)
	lbs	--	--	5675	5840	6070	6395	6545	6770	6940	7210	7610	7940	8270 (L)	
315/80R22.5** speed re-stricted LRL	Dual	kg	--	--	2800	2910	3030	3150	3260	3370	3450	3590	3750	3940	4125 (L)
	lbs	--	--	6175	6415	6670	6940	7190	7440	7610	7920	8270	8680	9090 (L)	
385/65R22.5	Dual	kg	--	--	--	--	--	--	--	--	--	--	--	--	--
	lbs	--	--	--	--	--	--	--	--	--	--	--	--	--	--
425/65R22.5	Dual	kg	2880	3060	3150	3350	3470	3650	3740	3850	4000	4100	4250	4360	4500 (L)
	lbs	6380	6720	6940	7350	7650	8050	8230	8510	8820	9050	9370	9610	9920 (L)	
445/50R22.5	Dual	kg	--	--	--	--	--	--	--	--	--	--	--	--	--
	lbs	--	--	--	--	--	--	--	--	--	--	--	--	--	--
445/65R22.5	Dual	kg	3430	3640	3750	3980	4130	4250	4440	4580	4750	4880	5150 (L)	--	--
	lbs	7590	7990	8270	8740	9100	9370	9790	10100	10500	10700	11400 (L)	--	--	
285/75R24.5	Dual	kg	--	--	--	--	--	--	--	--	--	--	--	--	--
	lbs	--	--	--	--	--	--	--	--	--	--	--	--	--	--
	Single	kg	1870	1970	2060	2150	2240	2360	2410	2490	2575 (G)	2660	2800 (H)	--	--
	lbs	4135	4340	4540	4740	4930	5205	5310	5495	5675 (G)	5860	6175 (H)	--	--	
	Single	kg	2060	2160	2240	2360	2460	2575	2650	2740	2800 (G)	2920	3075 (H)	--	--
	lbs	4545	4770	4940	5210	5420	5675	5835	6040	6175 (G)	6440	6780 (H)	--	--	

CAUTION: Always use approved tire and rim combinations for diameters and contours.
NOTE: All values are for 65 mph unless otherwise noted, for tire load and inflation at various speeds, see page 48-53.

* Based on TRA
 ** Based On ETRTO
NOTE: Letters in parentheses denote load range for which boldface loads are maximum.

Load Limits At Various Speeds

For Radial Ply Truck Tires Used On Improved Surfaces

(These Tables apply to tires only. Consult rim/wheel manufacturer for rim/wheel load and inflation capacities.)

Tire And Rim Association Standard

FOR METRIC AND WIDE BASE TIRES		
The service load and minimum (cold) inflation must comply with the following limitations unless a speed restriction is indicated on the tire or the manufacturer rates the tire at 75 mph or above.		
SPEED RANGE (MPH)	RADIAL PLY TIRES	
	INFL. PRESSURE CHANGE	% LOAD CHANGE
71 thru 75	+5 psi	-12%
66 thru 70	+5 psi	-4%
51 thru 65	No Increase	None
41 thru 50	No Increase	+7%
31 thru 40	No Increase	+9%
21 thru 30	+10 psi	+12%
11 thru 20	+15 psi	+17%
6 thru 10	+20 psi	+25%
2.6 thru 5	+20 psi	+45%
Creep thru 2.5	+20 psi	+55%
Creep (2)	+30 psi	+75%
Stationary	+30 psi	+105%

FOR CONVENTIONAL TIRES		
The service load and minimum (cold) inflation must comply with the following limitations unless a speed restriction is indicated on the tire or the manufacturer rates the tire at 75 mph or above.		
SPEED RANGE (MPH)	RADIAL PLY TIRES	
	INFL. PRESSURE CHANGE	% LOAD CHANGE
71 thru 75	+5 psi	-12%
66 thru 70	+5 psi	-4%
51 thru 65	No Increase	None
41 thru 50	No Increase	+9%
31 thru 40	No Increase	+16%
21 thru 30	+10 psi	+24%
11 thru 20	+15 psi	+32%
6 thru 10 (1)	+30 psi	+60%
2.6 thru 5 (1)	+30 psi	+85%
Creep thru 2.5 (1)	+30 psi	+115%
Creep (1) (2)	+40 psi	+140%
Stationary (1)	+40 psi	+185%

NOTES

1. Apply these increases to Dual Loads and Inflation Pressures.
2. Creep - Motion for not over 200 feet in a 30-minutes period.

Note 1: The inflation pressures shown in the minimum cold pressures for the various loads listed. **Higher pressures should be used as follows:**

- A. When required by the above speed/load table.
- B. When higher pressures are desirable to obtain improved operating performance. For speeds above 20 mph, the combined increases of A and B should not exceed 20 psi above the inflation specified for the maximum load of the tire.

Note 2: Load limits at various speed for:
Tires used in highway service at Restricted Speed.
Mining and Logging Tires used in Intermittent Highway Service.

THE MAXIMUM LOAD AND INFLATION CAPACITY OF THE RIM MUST NOT BE EXCEEDED.

Load Limits At Various Speeds

Tires Rated At 75 Mph And Radial Ply Truck Tires Used On Improved Surfaces

(These tables apply to tires only. Consult rim/wheel manufacturer for rim/wheel load and inflation capacities.)

Tire And Rim Association Standard

FOR METRIC AND WIDE BASE TIRES		
SPEED RANGE (MPH)	RADIAL PLY TIRES	
	INFL. PRESSURE CHANGE	% LOAD CHANGE
71 thru 75	No Increase	None
66 thru 70	No Increase	None
51 thru 65	No Increase	None
41 thru 50	No Increase	+7%
31 thru 40	No Increase	+9%
21 thru 30	+10 psi	+12%
11 thru 20	+15 psi	+17%
6 thru 10	+20 psi	+25%
2.6 thru 5	+20 psi	+45%
Creep thru 2.5	+20 psi	+55%
Creep (2)	+30 psi	+75%
Stationary	+30 psi	+105%

FOR CONVENTIONAL TIRES		
SPEED RANGE (MPH)	RADIAL PLY TIRES	
	INFL. PRESSURE CHANGE	% LOAD CHANGE
71 thru 75	No Increase	None
66 thru 70	No Increase	None
51 thru 65	No Increase	None
41 thru 50	No Increase	+9%
31 thru 40	No Increase	+16%
21 thru 30	+10 psi	+24%
11 thru 20	+15 psi	+32%
6 thru 10 (1)	+30 psi	+60%
2.6 thru 5 (1)	+30 psi	+85%
Creep thru 2.5 (1)	+30 psi	+115%
Creep (1) (2)	+40 psi	+140%
Stationary (1)	+40 psi	+185%

NOTES

1. Apply these increases to Dual Loads and Inflation Pressures.
2. Creep - Motion for not over 200 feet in a 30-minutes period.

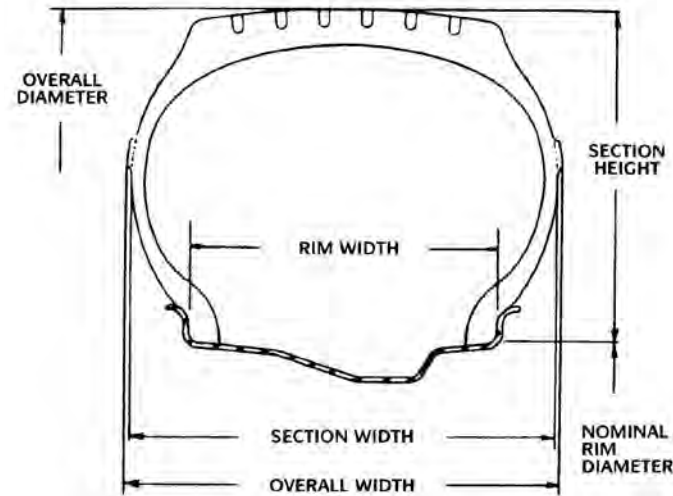
Note 1: The inflation pressures shown in the minimum cold pressures for the various loads listed. **Higher pressures should be used as follows:**

- A. When required by the above speed/load table.
- B. When higher pressures are desirable to obtain improved operating performance. For speeds above 20 mph, the combined increases of A and B should not exceed 20 psi above the inflation specified for the maximum load of the tire.

THE MAXIMUM LOAD AND INFLATION CAPACITY OF THE RIM MUST NOT BE EXCEEDED.

Definitions

New Tire Dimensions



Load Range Designation-Ply Rating Equivalency Table

Kilograms x 2.205 = Lbs.
mm x .03937 = Inches
kPa x .145 = psi

LOAD RANGE	PLY RATING
A	2
B	4
C	6
D	8
E	10
F	12
G	14
H	16
J	18
L	20
M	22
N	24

Aspect Ratio | Section Height | Section Width

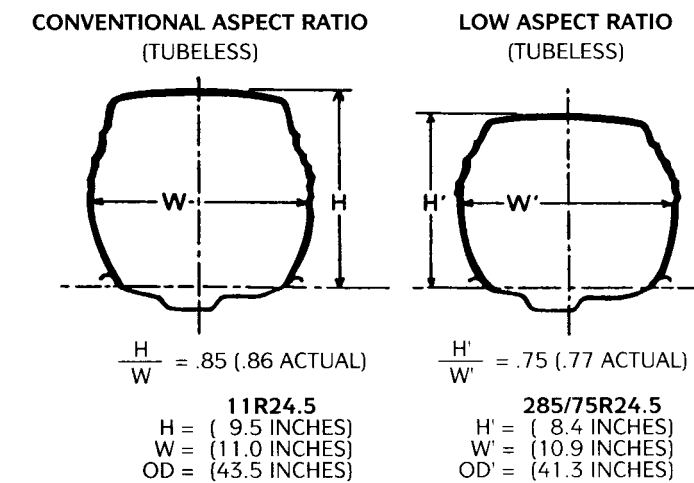
Rim Width	Linear distance between the flanges of the rim.
Static Loaded Radius	Distance from wheel axle centerline to supporting tread surface at a given load and pressure in a static condition.
Tire (Overall) Width	The width of a new tire, including 24-hour inflation growth, and including protective side ribs, bars and decorations.
Section Height	Half the difference between the overall diameter and the nominal rim diameter.
Overall Diameter	The diameter of an inflated tire at the outermost surface of the tread, including 24-hour inflation growth.
Revolutions Per Mile	Measured number of revolutions for a tire traveling one mile. This can vary with speed, load, and inflation.
Tread Width	Distance across tread from shoulder to shoulder.
Width Loaded	Tire width (overall) under rated load conditions.
Minimum Dual Spacing	Minimum dual tire centerline to centerline measurement.
Section Width	Linear distance between outside of sidewalls of inflated tire (exclusive of markings, etc.).

Low Aspect Ratio Tires

24.5 Inch Highway Size

(USING TYPICAL DESIGN DIMENSIONS)

Match Tire For Speed And Axle Weights



In a tire selection process, it is mandatory that consideration be given to selecting a tire size and load range which at least equals the maximum load requirements by axle position (steer, drive or trail). All highway truck tires have load limits established for tires used in normal highway service. Therefore, when selecting a tire for service, both the carrying capacity and speed implications must be considered.

TIRE LOAD LIMITS AT VARIOUS COLD INFLATION PRESSURES										
THE PRESSURE IS MINIMUM FOR LOAD										
MAXIMUM SPEED OF 65 MPH(MPH)										
Example for LRG										
SIZE			70	75	80	85	90	95	100	105
			(480)	(520)	(550)	(590)	(620)	(660)	(690)	(720)
11R22.5	Dual	kg	1990	2080	2160	2250	2360	2460	2560	2650 (G)
		lbs	4380	4580	4760	4950	5205	5415	5625	5840 (G)
11R24.5	Single	kg	2050	2160	2260	2370	2500	2600	2700	2800 (G)
		lbs	4530	4770	4990	5220	5510	5730	5950	6175 (G)
11R24.5	Dual	kg	2110	2210	2300	2390	2500	2580	2660	2725 (G)
		lbs	4660	4870	5070	5260	5510	5675	5840	6005 (G)
11R24.5	Single	kg	2190	2300	2410	2520	2650	2770	2890	3000 (G)
		lbs	4820	5070	5310	5550	5840	6095	6350	6610 (G)

For example, when selecting tires for a tractor and trailer combination with a gross combination weight (GCW) of 80,000 lbs. and an axle weight distribution of 12,000 lbs. on the steer, 34,000 lbs. on the tandem drive and 34,000 lbs. on the tandem trailer axles, the most common conventional tire sizes used are 11R22.5 Load Range G and 11R24.5 Load Range G. The load and inflation schedule according to the Tire and Rim Association tables for these sizes is shown above.

Safety Warnings

Tire Demounting And Mounting Safety Precautions

SAFETY WARNING

SERIOUS INJURY OR DEATH MAY RESULT FROM:




EXPLOSION OF TIRE RIM ASSEMBLY DUE TO IMPROPER MOUNTING - USE SAFETY CAGE & CLIP-ON EXTENSION AIR HOSE. ONLY SPECIALLY TRAINED PERSONS SHOULD MOUNT TIRES.

WARNING

Tire and wheel servicing can be dangerous, and should be done by trained personnel using proper tool and procedures and safety precautions in the RMA's "Demounting and Mounting Procedures for Trucks/Bus Tires" and "Inspection procedures for identification of potential zipper ruptures in steel cord radial medium and light truck tires" charts and service bulletins.

Failure to comply with these procedures may result in faulty positioning of the tire and/or rim parts, and cause the assembly to burst with explosive force, sufficient to cause serious injury or death. Never mount or use damaged tires or rims.

MISAPPLICATION/IMPROPER INFLATION/OVERLOADING SAFETY WARNINGS

WARNING

There is danger of serious injury or death if a tire of one bead diameter is installed on a rim or wheel of a different rim diameter.


Re-assembly and inflation of mismatched parts can result in serious injury or death. Just because parts come in together does not mean they belong together. Check for proper matching of all rim parts before putting any parts together.

Always replace a tire of exactly the same bead diameter designation and suffix letters.


For example: A 16" tire goes on a 16" rim. Never mount a 16" tire on a 16.1" or 16.5" rim. A 16.1" tire goes on a 16.1" Never mount a 16.1" tire on a 16" or 16.5" rim. A 16.5" tire goes on 16.5" rim. Never mount a 16.5" tire on a 16" or 16.1" rim.

While it is possible to pass a 16" diameter tire over the lip or flange of a 16.1" or 16.5" size diameter rim, it cannot be inflated enough to position itself against the rim flange. If an attempt is made to seat the tire bead by inflating, the tire bead will break with explosive force and could cause serious injury or death.

Rims of different diameters and tapers cannot be interchanged. The following diagram illustrates the difference between rims of two different tapers and diameters.



The following diagram shows how beads of a 16" tire will not seat on a 16.5" rim. The beads cannot be forced out against the rim flanges by using more air pressure because this will break the beads and the tire will explode with force sufficient to cause serious injury or death.



Never assemble a tire and rim unless you have positively identified and correctly matched the parts.

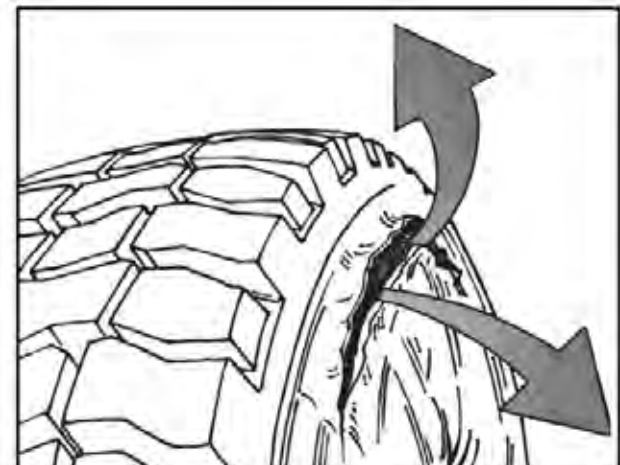
WARNING

NEVER inflate beyond 40 pounds pressure to seat beads. NEVER stand, lean or reach over the assembly during inflation. Inspect both sides of the tire to be sure that the beads are evenly seated. If tire is mounted on a machine that does not have a positive lock-down device to hold the wheel, inflation should be done on a safety cage. If both beads are not properly seated when pressure reaches 40 pounds air pressure, completely deflate the assembly, reposition the tire and/or tube on the rim, re-lubricate and reinflate. Inflating beyond 40 pounds air pressure when trying to seat the beads is a DANGEROUS PRACTICE that may break a tire bead (or even the rim) with explosive force, possibly resulting in serious injury or death. After the beads are fully seated, pressure may be increased above 40 psi to operating pressures, not to exceed the maximum labeled on the tire sidewall.

WARNING

Permanent tire damage due to under inflation and/or overloading cannot always be detected. Any tire known or suspected to have been run at 80% or less of normal operating inflation pressure and/or overloaded, could possibly have permanent structural damage (steel cord fatigue). Ply cords weakened by under inflation and/or overloading may break one after another, until a rupture occurs in the upper sidewall with accompanying instantaneous air loss and explosive force. This can result in serious injury or death.

Any tire of having been operated and under inflated and/or overloaded must be approached with caution. Completely deflate the tire by removing the valve core before removing the tire/rim/wheel assembly from the vehicle. After removing from the vehicle, clearly identify the tire so it will not be reinflated **until carefully inspected by a trained technician** to determine the cause of under inflation, as well as any tire damage resulting from under inflation and/or overloading.



WARNING

The use of any flammable material during tire servicing is absolutely prohibited. Use of starting fluid ether, gasoline, or any other flammable material to lubricate, seal or seat the beads of a tubeless tire can cause the tire to explode or can cause the explosive separation of the tire/rim assembly resulting in serious injury or death.

This practice may also result in undetected damage to the tire or rim that could result in failure of the tire in service.

Safety Warnings

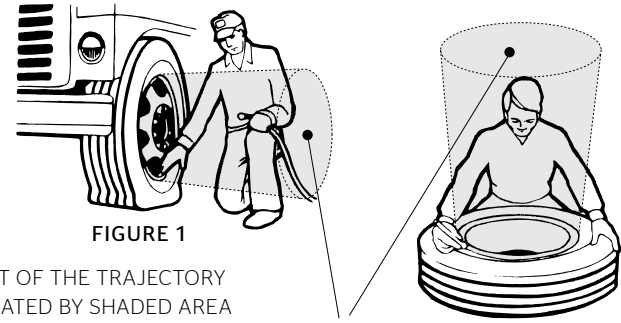


FIGURE 1

STAY OUT OF THE TRAJECTORY AS INDICATED BY SHADED AREA

Note: Under some circumstances, the trajectory may deviate from its expected path.

Always deflate tires before handling. Inflate only in safety cage.

TRAJECTORY FIGURE 2

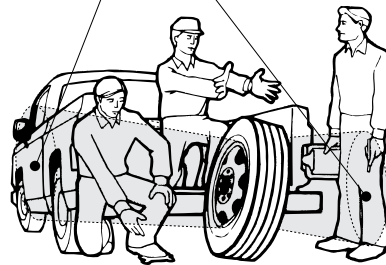


FIGURE 3

The air pressure contained in a tire is dangerous. The sudden release of this pressure by a tire blow-out or side ring separation can cause serious injury or death. Stay out of the trajectory as indicated by shaded area. When installing the tire/rim assembly on the vehicle, it will be impossible to stay out of the trajectory; however, at all other time you and all others must stay out of the trajectory.

⚠ WARNING

Tire explosions can cause death or personal injury or property damage.
Excessive speed in a free-running, unloaded tire can cause it to “explode” from extreme centrifugal force.

⚠ WARNING

When mounting dual disc wheels on a vehicle, be sure to carefully check and retighten or re-torque inner cap nuts before mounting the outer wheel. In demounting the outer wheel, there is a possibility that the inner cap nuts may have been loosened accidentally.

NEVER rework, weld, heat, or braze the tire/wheel/rim. Heating the rim of tire/wheel/rim. Heating the rim of tire/wheel/rim assembly can cause a tire to explode, causing serious injury or death.

NEVER hammer, strike or pry any type of tire/rim assembly while the tire contains inflation pressure. Do not attempt to seat any part while the tire contains any inflation pressure. This could result in serious injury

Regrooving

Continental, General, Ameri*Steel, and Euzkadi brand truck tires that have “REGROOVABLE” molded on the sidewall may be regrooved. After regrooving, it is required that 3/32” of under tread remains to cover the top ply. It is the responsibility of the regroover to assure that all Federal Regulations are met. For further clarification, see Code of Federal Regulations: Title 49, Transportation; Parts 569 and 393.75.

Service Descriptions

Continental Tire the Americas, LLC provides a service description onto the sidewall of all premium products.

This service description, which consists of one or more load indices and speed symbols, is located close to the tire size designation on the sidewall of the tire.

The load index relates to the maximum load carrying capacities allowed at the speed indicated by the speed symbol.

The speed symbol relates to the maximum speed allowed for the load carrying capacities associated with the load index.

The following is an example of a load index / speed symbol associated with a medium radial truck tire:

144/141

Load Indices
(Single/Dual)

L

Speed Symbol

The attached chart shows the comparison of load index to load and speed symbol to maximum speed for radial truck tire products.

Consult your local Continental Tire representative for confirmation of the suitability of the tire/wheel assembly for the intended service.

Truck-Bus Metric Tires

International Load Index Numbers

LOAD INDEX	Kg	Lbs.	LOAD INDEX	Kg	Lbs.
119	1360	3000	145	2900	6395
120	1400	3085	146	3000	6610
121	1450	3195	147	3075	6780
122	1500	3305	148	3150	6940
123	1550	3415	149	3250	7160
124	1600	3525	150	3350	7390
125	1650	3640	151	3450	7610
126	1700	3750	152	3550	7830
127	1750	3860	153	2650	8050
128	1800	3970	154	3750	8270
129	1850	4080	155	3875	8540
130	1900	4190	156	4000	8820
131	1950	4300	157	4125	9090
132	2000	4410	158	4250	9370
133	2060	4540	159	4375	9650
134	2120	4675	160	4500	9920
135	2180	4805	161	4625	10200
136	2240	4940	162	4750	10500
137	2300	5070	163	4875	10700
138	2360	5205	164	5000	11000
139	2430	5355	165	5150	11400
140	2500	5510	166	5300	11700
141	2575	5675	167	5450	12000
142	2650	5840	168	5600	12300
143	2725	6005	169	5800	12800
144	2800	6175	170	6000	13200

SPEED SYMBOL	SPEED (kmh)	SPEED (mph)
F	80	50
G	90	56
J	100	62
K	110	68
L	120	75
M	130	81
N	140	87
P	150	93
Q	160	99
R	170	106
S	180	112
T	190	118

Truck Tire Tread Depth

Conversion Table to Percent Of Wear:

Original Tire Tread Depths in 32nds

32nd	12	13	14	15	16	17	18	19	20	21	22	23	24	25	26	27	28	29	30	32	37	38	39	40	41	32nd
2/32	100%	100%	100%	100%	100%	100%	100%	100%	100%	100%	100%	100%	100%	100%	100%	100%	100%	100%	100%	100%	100%	100%	100%	100%	100%	2/32
3/32	90	91	92	92	93	93	94	94	94	95	95	95	95	96	96	96	96	96	96	97	97	97	97	97	97	3/32
4/32	80	82	83	85	86	87	88	88	89	89	90	90	91	91	92	92	92	93	93	93	94	94	95	95	95	4/32
5/32	70	73	75	77	79	80	81	82	83	84	85	86	86	87	88	88	88	89	89	90	91	92	92	92	92	5/32
6/32	60	64	67	69	71	73	75	76	78	79	80	81	82	83	83	84	85	85	86	87	89	89	89	89	90	6/32
7/32	50	55	58	62	64	67	69	71	72	74	75	76	77	78	79	80	81	81	82	83	86	86	86	87	87	7/32
8/32	40	45	50	54	57	60	63	65	67	68	70	71	73	74	75	76	77	78	79	80	83	83	84	84	85	8/32
9/32	30	36	42	46	50	53	56	59	61	63	65	67	68	70	71	72	73	74	75	77	80	81	81	82	82	9/32
10/32	20	27	33	38	43	47	50	53	56	58	60	62	64	65	67	68	69	70	71	73	77	78	78	79	79	10/32
11/32	10	18	25	31	36	40	44	47	50	53	55	57	59	61	63	64	65	67	68	70	74	75	76	76	77	11/32
12/32	0	9	17	23	29	33	38	41	44	47	50	52	54	57	58	60	62	63	64	67	71	72	73	74	74	12/32
13/32		0	8	15	21	27	33	35	39	42	45	45	50	52	54	56	58	59	61	63	69	69	70	71	72	13/32
14/32			0	8	14	20	25	29	33	37	40	43	45	48	50	52	54	56	57	60	66	67	68	68	69	14/32
15/32				0	7	13	19	24	28	32	35	38	41	43	46	48	50	52	54	57	63	64	65	66	67	15/32
16/32					0	6	13	18	22	26	30	33	36	39	42	44	46	48	50	53	60	61	62	63	64	16/32
17/32						0	6	12	17	21	25	29	32	35	38	40	42	44	46	50	57	58	59	61	62	17/32
18/32							0	6	11	16	20	24	27	30	33	36	39	41	43	47	54	56	57	58	59	18/32
19/32								0	6	11	15	19	23	26	29	32	35	37	39	43	51	53	54	55	56	19/32
20/32									0	5	10	14	18	22	25	28	31	33	36	40	49	50	51	53	54	20/32
21/32										0	5	10	14	17	21	24	27	30	32	37	46	47	49	50	51	21/32
22/32											0	5	5	13	17	20	23	26	29	33	43	44	46	47	49	22/32
23/32												0	9	9	13	16	19	22	25	30	40	42	43	45	46	23/32
24/32													0	4	8	12	15	19	21	27	37	39	41	42	44	24/32
25/32														0	4	8	12	15	18	23	34	36	38	39	41	25/32
26/32															0	4	8	11	14	21	31	33	35	37	38	26/32
27/32																0	4	7	11	17	29	31	32	34	36	27/32
28/32																	0	4	7	13	26	28	30	32	33	28/32
29/32																		0	4	10	23	25	27	29	31	29/32
30/32																			0	7	20	22	24	26	28	30/32
31/32																				3	17	19	22	24	26	31/32
32/32																				0	14	17	19	21	23	32/32
33/32																					11	14	16	18	21	33/32
34/32																					9	11	14	16	18	34/32
35/32																					6	8	11	13	15	35/32
36/32																					3	6	8	11	13	36/32
37/32																					0	3	5	8	10	37/32
38/32																					0	3	5	8	10	38/32
39/32																						0	3	5	8	39/32
40/32																							0	3	5	40/32
41/32																								0	3	41/32

SAFETY WARNING

SERIOUS INJURY MAY RESULT FROM:

Explosion of tire/rim assembly due to improper mounting - use safety cage and clip on extension air hose. Only specially trained persons should mount tires.

Tire failure due to misapplication/improper inflation/overloading - follow tire manufacturer's instructions. Check inflation pressure frequently with gauge.

A tire must always match the diameter requirements of the rim to which it is being mounted. For example, a 16 inch tire must always be mounted on a 16 inch rim. Also, when replacing the truck type radial tires, use only wheels approved for radial tires.

LOAD RANGE	REPLACES PLY RATING
A	2
B	4
C	6
D	8
E	10
F	12

LOAD RANGE	REPLACES PLY RATING
G	14
H	16
J	18
L	20
M	22
N	24

Continental Tire the Americas, LLC
1830 MacMillan Park Drive
Fort Mill, SC 29707
Phone: 704-583-3900
www.continental-truck.com

Continental Tire Canada, Inc.
6110 Cantay Road
Mississauga, ON L5R 3W5
Phone: 905-568-1303

Continental Tire de México S.A.
de C.V.
Av. Santa Fe 170 Piso 7
Col. Lomas de Santa Fé
Del. Alvaro Obregón C.P. 01210
México D.F.
Phone: 52 + 55-15-00-09-00

INSIDE SALES
US
800-450-4028 East
800-450-3187 West

Canada
800-461-9681 English
800-361-2844 French

Original Equipment Sales
800-776-2022

Commercial Specialty Tires
877-235-0102

