



2017 Product Guide

Commercial Specialty Tires

Since 1871, Continental Tire has continuously developed products that have enabled our customers to achieve increases in Performance, Safety, and Comfort.

Scan code or visit
<http://www.continental-specialty.com/specialty>
for the most up to date product information.



2017 Product Guide for Continental Commercial Specialty Tires.

We clearly see our customer's priorities. Continental Specialty Tire focuses on reducing operating costs and maximizing the return on your investment by offering high performance products serviceable in multiple applications. Our tires are characterized by long life, consistent wear, safety and most important value for money.

IMPORTANT NOTE:

Valid from July 1st 2017

Deliveries are subject to our terms and conditions.

Contents

Super Elastic Resilient pg. 4 - 19

Robust	SC10 • SC11 • SH12 • SC18 • SC20
Clean	SC10 • SC11 • SH12 • SC18 • SC20
SIT (Snap-in-Tire)	SC11 • SH12 • SC18 • SC20
Removal Rings	Demounting Rings for the removal of SIT Tires (8" - 20")
CSEasy	SC20
CSEasy Hardware	

Press on Bands pg. 20 - 31

POB - Steel	MH20 • MC20 • PT18 (Elastic and Clean STB)
POB - Wire Reinforced	MH20 • MC20 (KmA/L*KsA*Z A/L) (Elastic and Clean STB)

Industrial Pneumatics pg. 34 - 47

Cross-Ply	IC10/12 • IC30 • IC35 • IC36 • IC40
Radial	IC 70 • ContiRV 20 • ContiRT20 • ConRad HT1
TSR's	Tubeless Sealing Rings
Tubes	For use on all Cross-Ply and Radial Industrial Tube Type Tires
Flaps	For use on all Cross-Ply and Radial Industrial Tube Type Tires

ContiPressure Check pg. 50 - 51

Multi-Purpose Tires (MPT) pg. 52 - 55

Radial	MPT70E • MPT80 • MPT81
---------------	------------------------

Port Tires pg. 56 - 59

Material Handling Tires	ContainerMaster • CraneMaster • StraddleMaster • StraddleMaster Rib • DockMaster
--------------------------------	--

Conti LifeCycle pg. 60 - 67

POB - Steel	
--------------------	--

Astrum Blue: Remanufactured pg. 68 - 73

Resilient	Standard and Snap-in-Tire
------------------	---------------------------

Information - Contacts & Adjustment Policy pg. 75

HQ and Field Sales Staff	
---------------------------------	--

Warranty Information	
-----------------------------	--

Continental Super Elastic

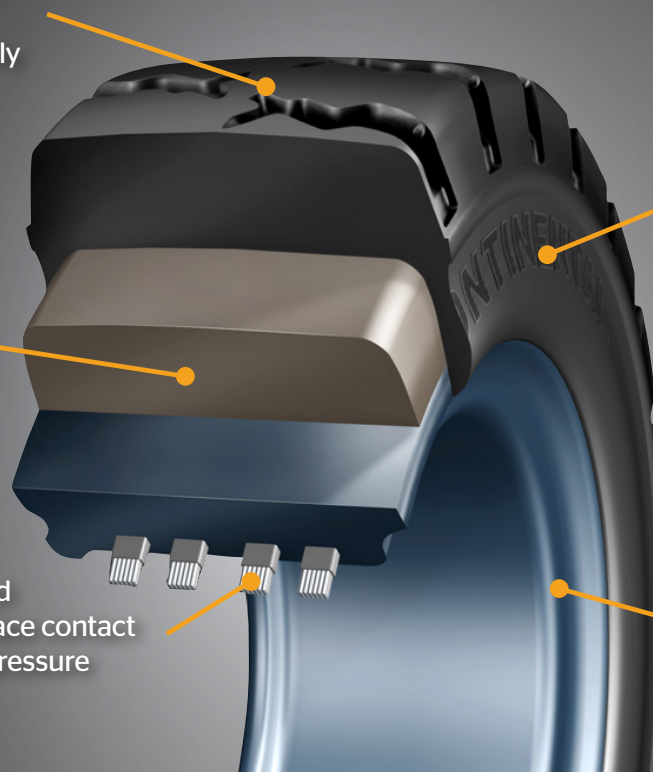
High cut & wear resistant tread compound wears slowly, smoothly and evenly

Highly elastic inner layer cushions the ride and reduces rolling resistance

Rectangular bundled bead wires ensure greater surface contact and even distribution of pressure between tire & rim

Robust sidewall construction resists cutting and chunking while protecting inner layers

Extra hard rubber base helps maintain tire's overall structural integrity



Features

- Highly-elastic rubber compounds
- Wrap-around tread stock that extends over each sidewall to the bead area
- 3-stage construction with inner cushion layer
- Rectangular-shaped, high-strength bead wire bundles within the tire base
- Most sizes also available in Snap-In-Tire (SIT) construction

Benefits

- Lower heat generation, less fuel consumption, smoother ride
- All-around protection from abrasion, cutting, and chunking while protecting inner layers
- Extra shock absorption for drivers & equipment
- Provides superior grip on rim, eliminates tire slippage— guaranteed!

Continental Super Elastic

Size	Rim Type	Rim	Description	Weight (Lbs)	Article Number
Super Elastic Resilient 4" - 8"					
4" Custom Rim					
3.00-4		3.00-4	CSE ROBUST M	13.2	1377755
4.00-4		2.50 C-4	ROBUST SC 10	13.2	1378054
8" Custom Rim					
4.00-8	SIT	3.00 D-8	ROBUST SC 20 Ener+	22.8	1376045
			CLEAN SC 20	23.8	1376082
125/75-8 (15x4 1/2-8)	S	3.00 D-8	ROBUST SC 11	19.5	1377978
			ROBUST SC 18	22.3	1377986
			CLEAN SC 18	22.3	1376170
			ROBUST SC 11	20.2	1377976
	SIT	3.00 D-8	CLEAN SC 11	20.5	1377974
			ROBUST SC 18	22.7	1377987
			CLEAN SC 18	22.7	1376188
			ROBUST SH 12	23.1	1377984
5.00-8	S	3.00 D-8	ROBUST SC 18	37.0	1378460
			CLEAN SC 18	37.0	1376167
150/75-8 (16x6-8)	SIT	3.00 D-8	ROBUST SC 18	37.0	1378461
			CLEAN SC 18	37.5	1376185
	S	4.33 R-8	ROBUST SC 18	35.9	1376211
			CLEAN SC 18	36.6	1376228
180/70-8 (18x7-8)	SIT	4.33 R-8	ROBUST SC 18	36.6	1378056
			CLEAN SC 18	36.6	1376191
	S	4.33 R-8	ROBUST SC 18	45.0	1379780
			CLEAN SC 18	45.0	1376158
180/70-8 (18x7-8)	SIT	4.33 R-8	ROBUST SC 18	45.2	1379781
			CLEAN SC 18	45.2	1376173
	S	4.33 R-8	ROBUST SH 12	46.3	1379713
			CLEAN SH 12	47.4	1379711

Product Overview



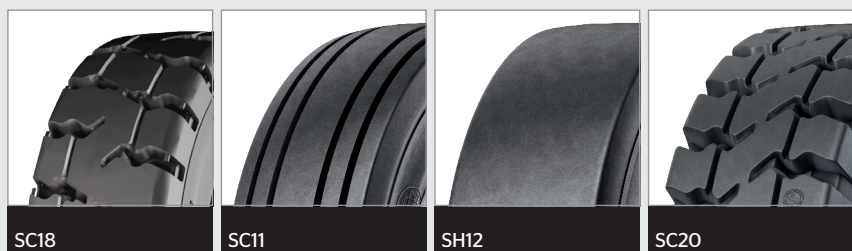
Anti-static
Limited size availability on request

Product Information
Super Elastic Resilient
Press on Bands
Industrial Pneumatics
ContiPressure Check
Multi-Purpose Tires (MPT)
Port Tires
LifeCycle™
Astrum Blue
Information

Continental Super Elastic

Size	Rim Type	Rim	Description	Weight (Lbs)	Article Number
Super Elastic Resilient 9" - 10"					
9" Custom Rim					
140/55-9	SIT	4.00 E-9	ROBUST SC 11	22.2	1379987
			CLEAN SC 11	23.7	1379988
			ROBUST SC 18	22.3	1376194
			CLEAN SC 18	22.3	1376227
6.00-9	S	4.00 E-9	ROBUST SC 11	54.6	1378680
			ROBUST SC 18	58.0	1378674
			CLEAN SC 18	58.0	1376166
	SIT	4.00 E-9	ROBUST SC 18	58.9	1378675
CLEAN SC 18			58.9	1376184	
200/75-9 (21x8-9)	S	6.00 E-9	ROBUST SC 18	71.9	1376199
			CLEAN SC 18	72.4	1376221
	SIT	6.00 E-9	ROBUST SC 18	73.0	1376198
			CLEAN SC 18	72.4	1376220
10" Custom Rim					
6.50-10	S	5.00 F-10	ROBUST SC 18	77.8	1378771
			CLEAN SC 18	77.8	1376165
	SIT	5.00 F-10	ROBUST SC 18	79.4	1378772
			CLEAN SC 18	79.4	1376183
200/50-10	S	6.50 F-10	ROBUST SC 18	50.0	1377360
			CLEAN SC 18	50.0	1376171
	SIT	6.50 F-10	ROBUST SC 18	51.4	1377361
			CLEAN SC 18	51.4	1376189
			ROBUST SH 12	50.8	1377381
			CLEAN SH 12	51.9	1377382
225/75-10 (23x9-10)	S	6.50 F-10	ROBUST SC 18	96.6	1378181
			CLEAN SC 18	96.6	1376169
	SIT	6.50 F-10	ROBUST SC 18	96.8	1378182
			CLEAN SC 18	96.8	1376187
			ROBUST SH 12	97.8	1378178

Product Overview



Anti-static 
 Limited size availability on request

Continental Super Elastic

Size	Rim Type	Rim	Description	Weight (Lbs)	Article Number
Super Elastic Resilient 12" - 15"					
12" Custom Rim					
7.00-12	S	5.00 S-12	ROBUST SC 18	103.2	1378874
			CLEAN SC 18	103.2	1376164
	SIT	5.00 S-12	ROBUST SC 18	104.5	1378875
			CLEAN SC 18	104.5	1376178
250/60-12 (23x10-12)	S	8.00 G-12	ROBUST SC 18	100.3	1376203
			CLEAN SC 18	100.3	1376224
	SIT	8.00 G-12	ROBUST SC 18	101.6	1376202
			CLEAN SC 18	101.6	1376225
250/75-12 (27x10-12)	S	8.00 G-12	ROBUST SC 18	153.0	1378384
	SIT	8.00 G-12	ROBUST SC 18	154.3	1378385
			CLEAN SC 18	154.3	1376186
315/45 - 12	SIT	10.00 G-12	ROBUST SC 18	153.0	1376487
13" Custom Rim					
160/90-13	SIT	3.75-13	SC 11 SIT	30.86	1300206
15" Custom Rim					
7.00-15	S	5.5-15	ROBUST SC 18	150.4	1376208
	SIT	5.5-15	CLEAN SC 18	150.4	1376226
	S	6.0-15	ROBUST SC 18	132.1	1376312
	SIT	5.5-15	ROBUST SC 18	150.4	1376207
7.50-15	S	6.5-15	ROBUST SC 18	151.7	1376210
8.25-15	S	6.5-15	ROBUST SC 18	194.4	1379170
			CLEAN SC 18	194.4	1376163
	SIT	6.5-15	ROBUST SC 18	196.0	1379171
			ROBUST SH 12	198.5	1379175
			CLEAN SH 12	198.5	1376177
			ROBUST SC 18	196.0	1379171
225/75-15 (28x9-15) (8.15-15)	S	7.0-15	ROBUST SC 18	130.5	1376984
			CLEAN SC 18	130.5	1376172
	SIT	7.0-15	ROBUST SC 18	132.7	1376985
			CLEAN SC 18	132.7	1376190

Product Overview



SC18 Clean

SC11 Clean

SH12 Clean

SC20 Clean

 **Anti-static**
Limited size availability on request

Product Information
Super Elastic Resilient
Press on Bands
Industrial Pneumatics
ContiPressure Check
Multi-Purpose Tires (MPT)
Port Tires
LifeCycle™
Astrum Blue
Information

Continental Super Elastic

Size	Rim Type	Rim	Description	Weight (Lbs)	Article Number
Super Elastic Resilient 15"					
15" Custom Rim					
250/70-15 (250-15)	S	7.0-15	ROBUST SC 18	145.9	1379288
			ROBUST SC 18	147.7	1379290
		CLEAN SC 18	147.7	1376162	
		CLEAN SC 18	147.7	1376161	
	SIT	7.0-15	ROBUST SC 18	147.0	1379289
			CLEAN SC 18	147.0	1376176
		7.5-15	ROBUST SC 18	150.1	1379291
			CLEAN SC 18	150.1	1376175
315/70-15 (300-15)	S	8.0-15	ROBUST SC 18	236.6	1379382
			CLEAN SC18	236.6	1376160
	SIT	8.0-15	ROBUST SC 18	238.5	1379383
			CLEAN SC 18	238.5	1376174
355/45-15 (28x12.5-15)	S	9.75-15	ROBUST SC 18	168.4	1376197
	SIT	9.75-15	ROBUST SC 18	169.8	1376196
			CLEAN SC 18	169.8	1376218
355/50-15	SIT	9.75-15	ROBUST SC 20 Ener+	187.0	1376234
			CLEAN SC 20	191.7	1376266
355/65-15 (350-15)	S	9.75-15	ROBUST SC 18	274.0	1376201
			CLEAN SC 18	275.4	1376223
	SIT	9.75-15	ROBUST SC 18	275.8	1376200
			CLEAN SC 18	275.8	1376222
10.00-20	S	7.5-20	ROBUST SC 18	374.6	1379590
			Conti Terminal Trailer	340.4	1376240
			CT Trailer S T Tire/Wheel Assy.	340.3	1601749
			CT Trailer MHP Tire/Wheel Assy.	340.3	1601750
			CT Trailer MSP Tire/Wheel Assy.	340.3	1601751
	8.0-20	ROBUST SC 18	375.9	1379588	
		Conti Terminal Trailer	341.1	1376239	

Product Overview



SC18

SC11

SH12

SC20

Anti-static
Limited size availability on request



Continental Super Elastic

Size	Rim Type	Rim	Description	Weight (Lbs)	Article Number
Super Elastic Resilient 20" - 24"					
20" Custom Rim					
12.00-20	S	8.0-20	ROBUST SC 18	461.6	1376204
			CLEAN SC 18	461.6	1376302
		8.5-20	ROBUST SC 18	464.7	1376206
			CLEAN SC 18	464.7	1376303
		10.0-20	ROBUST SC 18	535.7	1376205
			CLEAN SC 18	535.7	1376304
355/50-20	SIT	10.0-20	ROBUST SH 12	249.7	1377601
24" Custom Rim					
12.00-24	S	8.5-24	ROBUST SC 18	508.0	1376267
14.00-24	S	10.0-24	ROBUST SC 18	759.9	1376268

Size	Description	Weight (Lbs)	Article Number
SIT Removal Rings			
8 - 20" SIT Removal Rings	Complete Kit incl. Removal Rings	12.0	2050901
	Box Only	10.1	2050902
	Single Rings		
4.00-8, 5.00-8, 15x4 1/2-8	SIT Removal-Ring #1	0.1	2050911
16x6-8, 18x7-8	SIT Removal-Ring #2	0.1	2050921
6.00-9, 21x8-9	SIT Removal-Ring #3	0.1	2050931
6.50-10, 23x9-10, 200/50-10	SIT Removal-Ring #4	0.1	2050941
7.00-12	SIT Removal-Ring #5	0.2	2050951
23x10-12, 27x10-12	SIT Removal-Ring #6	0.2	2050961
22x4 1/2, 23x5, 25x6	SIT Removal-Ring #7	0.2	2050971
all 15" - Dimensions	SIT Removal-Ring #8	0.3	2050981
all 20" - Dimensions	SIT Removal-Ring #9	0.5	2050991

Product Overview



Anti-static
Limited size availability on request

Product Information
Super Elastic Resilient
Press on Bands
Industrial Pneumatics
ContiPressure Check
Multi-Purpose Tires (MPT)
Port Tires
LifeCycle™
Astrum Blue
Information

Technical Data – Super Elastic

Tire			Rim	Standard Value (ETRTO)				Tire Dimensions (mm)				Rolling Circum (+-2.5%) inch
Type	Size	Tread	Rim	Overall Width		Overall Diameter (+-2.0%)		Actual Value		Overall Diameter (+-1.0%)		
				inch	mm	inch	mm	inch	mm	inch	mm	
4"												
SC10S	4.00-4/2.50	SC10	2.50 C-4	4.57	116	12.05	306	3.54	90	11.85	301	37.99
8"												
SC20S	4.00-8/3.00	SC20	3.00 D-8	4.76	121	15.98	406	4.17	106	15.83	402	49.80
SC11	15x4½-8/3.00	SC11	3.00 D-8	5.20	132	14.84	377	4.33	110	14.80	376	47.44
SC18S	125/75-8/3.00	SC18	3.00 D-8	5.20	132	14.84	377	4.76	121	14.84	377	47.56
SH12 CLEANS	125/75-8/3.00	SH12	3.00 D-8	5.20	132	14.84	377	4.76	121	14.84	377	47.56
SC18S	5.00-8/3.00	SC18	3.00 D-8	5.63	143	18.03	458	4.96	126	18.07	459	57.80
SC18S	150/75-8/4.33	SC18	4.33 R-8	6.38	162	16.42	417	6.14	156	16.42	417	52.52
SH12SIT	150/75-8/4.33	SH12	4.33 R-8	6.38	162	16.42	417	6.30	160	16.77	426	53.74
SC18S	180/70-8/4.33	SC18	4.33 R-8	7.36	187	17.87	454	6.14	156	17.87	454	57.17
SH12S	180/70-8/4.33	SH12	4.33 R-8	7.36	187	17.83	453	5.98	152	17.60	447	56.26
9"												
SC11	140/55-9/4.00	SC11	4.00 E-9	5.79	147	14.76	375	5.16	131	14.84	377	47.95
SC18SIT	140/55-9/4.00	SC18	4.00 E-9	5.79	147	14.76	375	5.16	131	14.84	377	47.52
SC11	6.00-9/4.00	SC11	4.00 E-9	6.81	173	20.83	529	5.43	138	20.51	521	64.96
SC18S	6.00-9/4.00	SC18	4.00 E-9	6.81	173	20.83	529	5.63	143	20.83	529	66.73
SC18S	200/75-9/6.00	SC18	6.00 E-9	8.50	216	20.63	524	7.13	181	20.63	524	64.84
10"												
SC18S	6.50-10/5.00	SC18	5.00 F-10	7.52	191	22.68	576	6.38	162	22.68	576	72.68
10"												
SC18S	200/50-10/6.50	SC18	6.50 F-10	8.70	221	18.03	458	7.72	196	17.80	452	57.17
SH12SIT	200/50-10/6.50	SH12	6.50 F-10	8.70	221	18.39	467	7.68	195	17.72	450	56.77
SC18S	225/75-10/6.50	SC18	6.50 F-10	9.57	243	22.95	583	7.60	193	22.95	583	73.54
SH12SIT	225/75-10/6.50	SH12	6.50 F-10	9.57	243	22.95	583	7.68	195	22.72	577	72.99
12"												
SC18S	7.00-12/5.00	SC18	5.00 S-12	8.15	207	25.87	657	6.81	173	25.87	657	82.87
SC18S	250/60-12/8.00	SC18	8.00 G-12	10.83	275	22.95	583	9.21	234	22.60	574	72.40
SC18S	250/75-12/8.00	SC18	8.00 G-12	10.83	275	26.61	676	9.17	233	26.61	676	85.28

Rolling Circum (+/-2.5%)	Tread Depth		Tire Load Capacity (ETRTO)											
			Other Vehicles at Max. Speed						Fork Lift Trucks Max. 16 mph 25 km/h					
	1/32	mm	Stationary		4 mph 6 km/h		6 mph 10 km/h		16 mph 25 km/h		Load Wheel		Steering Wheel	
			lbs	kg	lbs	kg	lbs	kg	lbs	kg	lbs	kg	lbs	kg
965	28	22.5	1,367	620	1,179	535	1,069	485	908	412	1,179	535	908	412
1,265	43	34	2,425	1,100	2,094	950	1,896	860	1,609	730	2,094	950	1,609	730
1,205	34	27	2,668	1,210	2,293	1,040	2,083	945	1,764	800	2,293	1,040	1,764	800
1,208	33	26.5	2,668	1,210	2,293	1,040	2,083	945	1,764	800	2,293	1,040	1,764	800
1,208	33	26.5	2,668	1,210	2,293	1,040	2,083	945	1,764	800	2,293	1,040	1,764	800
1,468	49	39	3,627	1,645	3,120	1,415	2,833	1,285	2,403	1,090	3,120	1,415	2,403	1,090
1,334	40	32	3,726	1,690	3,208	1,455	2,910	1,320	2,535	1,150	3,208	1,455	2,535	1,150
1,365	40	32	3,726	1,690	3,208	1,455	2,910	1,320	2,535	1,150	3,208	1,455	2,535	1,150
1,452	48	38	5,490	2,490	4,729	2,145	4,288	1,945	3,638	1,650	4,729	2,145	3,638	1,650
1,429	43	34	5,490	2,490	4,729	2,145	4,288	1,945	3,638	1,650	4,729	2,145	3,638	1,650
1,218	39	31	-	-	2,579	1,170	2,337	1,060	1,984	900	2,579	1,170	1,984	900
1,207	39	31	-	-	2,579	1,170	2,337	1,060	1,984	900	2,579	1,170	1,984	900
1,650	40	32	4,828	2,190	4,156	1,885	3,770	1,710	3,197	1,450	4,156	1,885	3,197	1,450
1,695	58	46	4,828	2,190	4,156	1,885	3,770	1,710	3,197	1,450	4,156	1,885	3,197	1,450
1,647	57	45	7,055	3,200	6,074	2,755	5,523	2,505	4,674	2,120	6,074	2,755	4,674	2,120
1,846	62	49.5	5,997	2,720	5,159	2,340	4,685	2,125	3,968	1,800	5,159	2,340	3,968	1,800
1,452	44	35	6,327	2,870	5,445	2,470	4,938	2,240	4,189	1,900	5,445	2,470	4,189	1,900
1,442	38	30.5	6,327	2,870	5,445	2,470	4,938	2,240	4,189	1,900	5,445	2,470	4,189	1,900
1,868	63	50	8,818	4,000	7,595	3,445	6,889	3,125	5,842	2,650	7,595	3,445	5,842	2,650
1,854	65	51.5	8,818	4,000	7,595	3,445	6,889	3,125	5,842	2,650	7,595	3,445	5,842	2,650
2,105	67	53.5	7,452	3,380	6,437	2,920	5,831	2,645	4,938	2,240	6,437	2,920	4,938	2,240
1,839	54	43	9,656	4,380	8,311	3,770	7,540	3,420	6,393	2,900	8,311	3,770	6,393	2,900
2,166	71	56	9,987	4,530	8,598	3,900	7,804	3,540	6,614	3,000	8,598	3,900	6,614	3,000

Technical Data – Super Elastic (continued)

Tire			Rim	Standard Value (ETRTO)				Tire Dimensions (mm)				Rolling Circum (+-2.5%) inch
Type	Size	Tread	Rim	Overall Width		Overall Diameter (+-2.0%)		Actual Value		Overall Diameter (+-1.0%)		
				inch	mm	inch	mm	inch	mm	inch	mm	
15"												
SC18 CLEAN SIT	7.00-15/5.5	SC18	5.5-15	8.39	213	28.78	731	8.19	208	29.33	745	92.44
SC20 SIT	7.00-15/5.5	SC20	5.5-15	8.39	213	28.78	731	6.97	177	28.23	717	89.41
SC18 S	7.00-15/6.0	SC18	6.0-15	8.39	213	28.78	731	8.19	208	29.33	745	92.44
SC18 S	7.50-15/6.5	SC18	6.5-15	9.21	234	29.80	757	8.19	208	29.33	745	92.48
SC18 S	8.25-15/6.5	SC18	6.5-15	9.96	253	32.24	819	8.11	206	32.24	819	103.31
SH12 SIT	8.25-15/6.5	SH12	6.5-15	9.96	253	32.24	819	8.19	208	31.85	809	100.98
SC18 S	225/75-15/7.0	SC18	7.0-15	9.17	233	27.28	693	8.70	221	27.28	693	87.44
SC18 S	250/70-15/7.0	SC18	7.0-15	10.43	265	28.35	720	8.70	221	28.35	720	90.83
SH12 S	250/70-15/7.0	SH12	7.0-15	10.43	265	28.35	720	9.06	230	28.35	720	91.54
SC18 S	250/70-15/7.5	SC18	7.5-15	10.43	265	28.35	720	8.70	221	28.35	720	90.83
SC18 S	355/45-15/9.75	SC18	9.75-15	13.98	355			11.46	291	26.89	683	86.57
SC20 SIT	355/50-15/9.75	SC20	9.75-15	14.57	370	28.39	721	11.46	291	27.95	710	89.92
SC18 S	355/65-15/9.75	SC18	9.75-15	14.69	373	32.44	824	11.50	292	32.44	824	103.35
20"												
SC18 S	10.00-20/7.5	SC18	7.5-20	11.89	302	40.51	1,029	10.43	265	40.35	1,025	129.17
SH12 S	10.00-20/7.5	SH12	7.5-20	11.89	302	40.51	1,029	9.61	244	39.84	1,012	125.98
SC18 S	10.00-20/8.0	SC18	8.0-20	11.89	302	40.51	1,029	10.43	265	40.35	1,025	129.17
SH12 S	10.00-20/8.0	SH12	8.0-20	11.89	302	40.51	1,029	9.61	244	39.88	1,013	129.49
SC18 S	12.00-20/8.0	SC18	8.0-20	13.27	337	43.23	1,098	10.98	279	42.83	1,088	134.76
SC20 S	12.00-20/8.5	SC20	8.5-20	13.27	337	43.23	1,098	11.14	283	43.46	1,104	136.89
SC18 S	12.00-20/8.5	SC18	8.5-20	13.27	337	43.23	1,098	10.98	279	42.83	1,088	134.76
SC20 S	12.00-20/10.0	SC20	10.0-20	13.27	337	43.23	1,098	12.72	323	43.46	1,104	137.40
SC18 S	12.00-20/10.0	SC18	10.0-20	13.86	352	43.23	1,098	12.72	323	42.83	1,088	135.59
SH12 S	355/50-20/10.0	SH12	10.0-20	14.65	372	32.40	823	12.40	315	32.40	823	103.82
24"												
SC18 S	12.00-24/8.5	SC18	8.5-24	13.27	337	47.09	1,196	11.02	280	46.38	1,178	146.46

Rolling Circum (+/-2.5%)	Tread Depth		Tire Load Capacity (ETRTO)											
			Other Vehicles at Max. Speed						Fork Lift Trucks Max. 16 mph 25 km/h					
	Stationary		4 mph 6 km/h		6 mph 10 km/h		16 mph 25 km/h		Load Wheel		Steering Wheel			
	mm	1/32	mm	lbs	kg	lbs	kg	lbs	kg	lbs	kg	lbs	kg	lbs
2,348	71	56.5	9,072	4,115	7,815	3,545	7,088	3,215	6,008	2,725	7,815	3,545	6,008	2,725
2,271	72	57	9,072	4,115	7,815	3,545	7,088	3,215	6,008	2,725	7,815	3,545	6,008	2,725
2,348	71	56.5	9,072	4,115	7,815	3,545	7,088	3,215	6,008	2,725	7,815	3,545	6,008	2,725
2,349	71	56.5	9,987	4,530	8,598	3,900	7,804	3,540	6,614	3,000	8,598	3,900	6,614	3,000
2,624	94	75	12,147	5,510	10,472	4,750	9,480	4,300	8,047	3,650	10,472	4,750	8,047	3,650
2,565	77	61	12,147	5,510	10,472	4,750	9,480	4,300	8,047	3,650	10,472	4,750	8,047	3,650
2,221	59	46.5	9,656	4,380	8,311	3,770	7,540	3,420	6,393	2,900	8,311	3,770	6,393	2,900
2,307	87	69	12,147	5,510	10,472	4,750	9,480	4,300	8,047	3,650	10,472	4,750	8,047	3,650
2,325	63	50	12,147	5,510	10,472	4,750	9,480	4,300	8,047	3,650	10,472	4,750	8,047	3,650
2,307	87	69	12,147	5,510	10,472	4,750	9,480	4,300	8,047	3,650	10,472	4,750	8,047	3,650
2,199	57	45.5	14,154	6,420	12,181	5,525	11,056	5,015	9,370	4,250	12,181	5,525	9,370	4,250
2,284	67	53	14,156	6,421	12,183	5,526	11,058	5,016	9,372	4,251	12,183	5,526	9,372	4,251
2,625	89	71	19,976	9,061	15,435	7,001	14,178	6,431	12,017	5,451	17,198	7,801	13,230	6,001
3,281	98	77.5	16,645	7,550	13,228	6,000	12,015	5,450	11,023	5,000	13,228	6,000	11,023	5,000
3,200	101	80	16,645	7,550	13,228	6,000	12,015	5,450	11,023	5,000	13,228	6,000	11,023	5,000
3,281	98	77.5	16,645	7,550	13,228	6,000	12,015	5,450	11,023	5,000	13,228	6,000	11,023	5,000
3,289	98	78	16,645	7,550	13,228	6,000	12,015	5,450	11,023	5,000	13,228	6,000	11,023	5,000
3,423	105	83	20,812	9,440	16,535	7,500	15,013	6,810	13,779	6,250	16,535	7,500	13,779	6,250
3,477	113	90	20,812	9,440	16,535	7,500	15,013	6,810	13,779	6,250	16,535	7,500	13,779	6,250
3,423	105	83	20,812	9,440	16,535	7,500	15,013	6,810	13,779	6,250	16,535	7,500	13,779	6,250
3,490	113	90	21,539	9,770	17,119	7,765	15,543	7,050	14,264	6,470	17,119	7,765	14,264	6,470
3,444	106	84	21,539	9,770	17,119	7,765	15,543	7,050	14,264	6,470	17,119	7,765	14,264	6,470
2,637	47	37	23,016	10,440	19,820	8,990	17,990	8,160	15,245	6,915	19,820	8,990	15,245	6,915
3,720	110	87	22,134	10,040	17,593	7,980	15,984	7,250	14,661	6,650	17,593	7,980	14,661	6,650



CSEasy SC20

Quite simply without press

Previously, mounting super-elastic tires required a stationary or mobile press, along with experienced operating personnel. Now we have something quite different; CSEasy, the tire with the unique conical adapter. The tire can be quickly installed on any rim with a Lemmerz lock ring gutter without special tools.

The conical shaped adapter connects into the replacement tire. The corresponding screw system provides a secure connection to the rim and ensures optimum rim seating.

The CSEasy SC20 will lower installation costs, service charges and decrease downtime with its revolutionary assembly principle.

CSEasy SC20 are also available in Clean – Please contact your salesperson for availability.

Continental CSEasy

Size	Rim	Description	Weight (Lbs)	Article Number
CSEasy, Hardware and Removal Rings				
8" Custom Rim				
125/75-8 (15x4 1/2-8)	3.00 D-8	SC 20 CSEasy	18.8	1378023
		Adapter	5.4	1730661
180/70-8 (18x7-8)	4.33 R-8	SC 20 CSEasy	39.5	1378021
		Adapter	7.6	1730662
9" Custom Rim				
6.00-9	4.00 E-9	SC 20 CSEasy	50.2	1378029
		Adapter	9.3	1730673
200/75-9 (21x8-9)	6.00 E-9	SC 20 CSEasy	60.1	1378028
		Adapter	11.0	1730670
10" Custom Rim				
200/50-10	6.50 F-10	SC20 CSEasy	30.4	1378077
		Adapter	14.3	1730671
225/75-10 (23x9-10)	6.50 F-10	SC20 CSEasy	79.0	1378024
		Adapter	14.3	1730671
12" Custom Rim				
7.00-12	5.00 S-12	SC 20 CSEasy	90.1	1378022
		Adapter	14.4	1730675
CSEasy Hardware				
5.00-8 & 125/75-8 (15x4 1/2-8)		Steel Screw & Washer Set	0.5	1730663
150/75-8 (16x6-8) & 180/70-8 (18x7-8)		Steel Screw & Washer Set	1.0	1730664
6.00-9		Steel Screw & Washer Set	1.0	1730665
200/75-9 (21x8-9)		Steel Screw & Washer Set	1.9	1730666
6.50-10/7.00-12		Steel Screw & Washer Set	1.7	1730668
225/75-10 (23x9-10)		Steel Screw & Washer Set	2.1	1730667
250/75-12 (27x10-12)		Steel Screw & Washer Set	5.1	1730669

CSEasy SC20 are also available in Clean - Please contact your salesperson for availability.

Additional CSEasy sizes available upon request.

Product Overview CSEasy



CSEasy SC20



CSEasy SC20 Clean

Continental CSEasy Assembly Instructions



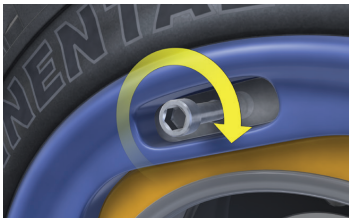
CSEasy Adapter

- › Mount adapter to rim
- › The adapter fits into lock ring gutter
- › No tools required for this set



CSEasy Tire

- › Place CSEasy Tire over adapter on rim



Bolt Installation

- › Hand screw bolts into each hole, then tighten to the specified torque levels



Your Vehicle

- › Your vehicle is ready for operation; please check torque on wheels after 100 hours

For instructional video please go to <https://www.youtube.com/watch?v=SHmdihgljFM>

CSEasy SC20 are also available in Clean - Please contact your salesperson for availability.

Product Overview CSEasy



CSEasy SC20



CSEasy SC20 Clean

Technical Data – CSEasy

Tire		Rim	Standard Value (ETRTO)				Tire Dimensions				
Size	Tread	Rim	Overall Width		Overall Diameter (+2,0%)		Overall Width (+2%)		Overall Diameter (+1,0%)		
			inch	mm	inch	mm	inch	mm	inch	mm	
			8"								
125/75 - 8 / 3.00	CSEasy SC20	3.00 D-8	5.20	132	14.84	377	4.76	121	14.84	377	
180/70 - 8 / 4.33	CSEasy SC20	4.33 R-8	7.36	187	17.87	454	6.14	156	17.87	454	
9"											
6.00 - 9 / 4.00	CSEasy SC20	4.00 E-9	6.81	173	20.83	529	5.63	143	20.83	529	
200/75 - 9 / 6.00	CSEasy SC20	6.00 E-9	8.50	216	20.63	524	7.13	181	20.63	524	
10"											
200/50 - 10/6.50	CSEasy SC20	10	7.87	200	17.87	454	*	*		*	
225/75-10	CSEasy SC20	10	8.85	225	23.3	592	*	*	*	*	
12"											
7.00 - 12 / 5.00	CSEasy SC20	5.00 S-12	8.15	207	25.87	657	6.81	173	25.87	657	

Additional CSEasy sizes available upon request.

Actual Value CSE		Tire Load Capacity (ETRTO)										Fork Lift Trucks			
Rolling Circumference (+2,5%)		Other Vehicles At Max. Speed								max. 16 mph		max. 25 km/h			
inch	mm	Stationary		4 mph 6 km/h		6 mph 10 km/h		16 mph 25 km/h		Load Wheel		Steering Wheel			
		lbs	kg	lbs	kg	lbs	kg	lbs	kg	lbs	kg	lbs	kg		
47.44	1205	2668	1210	2293	1040	2083	945	1764	800	2293	1040	1764	800		
57.09	1450	5490	2490	4729	2145	4288	1945	3638	1650	4729	2145	3638	1650		
66.54	1690	4828	2190	4156	1885	3770	1710	3197	1450	4156	1885	3197	1450		
65.75	1670	7055	3200	6074	2755	5523	2505	4674	2120	6074	2755	4674	2120		
*	*	*	*	*	*	*	*	4188	1900	*	*	*	*		
*	*	*	*	*	*	*	*	5842	2650	*	*	*	*		
81.89	2080	7452	3380	6437	2920	5831	2645	4938	2240	6437	2920	4938	2240		



Continental Press-On Bands

MH20

Compact and strong

The Continental MH20 is the heavy duty king. Its sturdy construction allows the MH20 to withstand high bearing loads while using small wheel sizes. Therefore, it is perfectly suited for vehicles that need to transport heavy loads in a diversity of applications.

ContiPT18

The all-rounder

The Conti PT18 has the same superior driving forces of the Super Elastic tire, but in a Press On Band tire. The PT18's traction design achieves high levels of traction combined with high load capability and increased tire life.

Continental Press-On Bands - Steel

Size	Ply Rating	Description	Weight (Lbs)	Article Number
Steel Bands - Press On Bands 6-1/2" - 10-1/2" (165 - 267 mm)				
6-1/2" = 165 mm Rim				
10x4x6 1/2	MH 20	STB A	12.3	1328404
		CLEAN STB	12.3	1328406
10x5x6 1/2 (254/127-165)		STB A	15.4	1316005
		CLEAN STB	15.4	1300069
10 1/2x5x6 1/2 (267/127-165)		STB A	17.0	1316105
8" = 203 mm Rim				
12x4-1/2x8	MH 20	STB A	18.3	1300100
		CLEAN STB	18.3	1300216
13 1/2x5 1/2x8 (343/140-203)		STB A	28.4	1329405
		CLEAN STB	28.4	1329406
13x4-1/2x8	MH 20	STB A	23.1	1328405
13x5x8 (330/127-203)	MC 20	STB A	23.1	1328555
		CLEAN STB	22.9	1300065
13 1/2x5 1/2x8		STB A	27.7	1329404
14x4 1/2x8 (356/114-2003)	MH 20	STB A	24.6	1328905
		CLEAN STB	25.4	1328906
	MC 20	STB A	24.2	1328955
10" = 254 mm Rim				
14x5x10 (356/127-254)	MH 20	STB A	24.6	1300009
		CLEAN STB	26.3	1300012
10 1/2" = 267 mm Rim				
16x5x10 1/2 (406/127-267)	MH 20	STB A	31.9	1340205
		CLEAN STB	32.8	1340215
	PT 18	STB A	31.9	1300023
		CLEAN STB	31.9	1300059
16x6x10 1/2 (406/152-267)	MH 20	STB A	38.4	1340805
		CLEAN STB	39.5	1340851
	PT 18	STB A	39.7	1300031
		CLEAN STB	38.4	1300061

Product Overview Press-On Bands - Steel



A = drive wheels | L = for wheels | Z = for cylindrical rim | STB = steel floor
 Ks = conical rim, side split | Km = conical rim, center divided

Product Information
 Super Elastic Resilient
 Press on Bands
 Industrial Pneumatics
 Contipressure Check
 Multi-Purpose Tires (MPT)
 Port Tires
 LifeCycle™
 Astrum Blue
 Information

Continental Press-On Bands - Steel

Size	Ply Rating	Description	Weight (Lbs)	Article Number
Steel Bands - Press On Bands 10-1/2" - 12-1/8" (267 - 308 mm)				
10 1/2" = 267 mm Rim				
16x7x10 1/2 (406/178-267)	MH 20	STB A	47.2	1300068
		CLEAN STB	47.2	1300066
11 1/4" = 286 mm Rim				
15x5x11 1/4 (381/127-286)	MH 20	STB A	26.4	1343405
		CLEAN STB	26.9	1343401
16 1/4x5x11 1/4 (413/127-286)	MH 20	STB A	31.6	1343805
		CLEAN STB	32.4	1343801
16 1/4x6x11 1/4 (413/152-286)	MH 20	STB A	38.1	1344205
		CLEAN STB	38.1	1344201
16 1/4x7x11 1/4 (413/178-286)	MH 20	STB A	44.5	1344454
		CLEAN STB	42.8	1300067
12 1/8" = 308 mm Rim				
17x4 1/2 x 12 1/8	MH 20	STB A	29.8	1351805
18x5x12 1/8 (457/127-308)		STB A	38.4	1352254
		CLEAN STB	39.1	1352261
18x6x12 1/8 (457/152-308)	MH 20	STB A	45.9	1352854
		CLEAN STB	47.2	1352851
	PT 18	STB A	47.4	1300024
		CLEAN STB	45.9	1300060
18x7x12 1/8 (457/178-308)	MH 20	STB A	53.7	1353854
		CLEAN STB	53.7	1353861
	PT 18	STB A	56.0	1300025
		CLEAN STB	54.0	1300058
18x8x12 1/8 (457/203-308)	MH 20	STB A	61.3	1354054
		CLEAN STB	62.2	1354061

Product Overview Press-On Bands - Steel

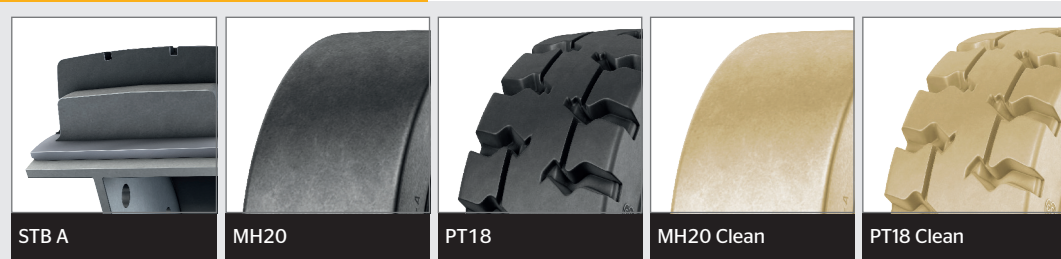


A = drive wheels | L = for wheels | Z = for cylindrical rim | STB = steel floor
 Ks = conical rim, side split | Km = conical rim, center divided

Continental Press-On Bands - Steel

Size	Ply Rating	Description	Weight (Lbs)	Article Number
Steel Bands - Press On Bands 12-1/8" - 16" (308 - 406 mm)				
12 1/8" = 308 mm Rim				
18x8x12 1/8 (457/203-308)	PT 18	STB A	63.9	1300026
		CLEAN STB	63.9	1300064
15" = 381 mm Rim				
21x5x15 (533/127-381)	MH 20	STB A	46.3	1360505
21x6x15 (533/152-381)	MC 20	STB A	54.9	1361255
21x7x15 (533/178-381)	MH 20	STB A	67.0	1361854
		CLEAN STB	69.0	1361851
	PT 18	STB A	66.6	1300027
		CLEAN STB	66.4	1300055
21x8x15 (533/203-381)	MH 20	STB A	77.1	1362456
		CLEAN STB	78.5	1362451
	PT 18	STB A	76.7	1300028
		CLEAN STB	76.5	1300057
21x9x15 (533/229-381)	MH 20	STB A	84.4	1363005
		CLEAN STB	86.2	1363006
	PT 18	STB A	85.1	1300071
		CLEAN STB	85.1	1300070
16" = 406 mm Rim				
22x6x16 (559/152-406)	MH 20	STB A	62.6	1364105
		CLEAN STB	62.6	1364106
22x8x16 (559/203-406)	MH 20	A-ROBUST STB	83.8	1364305
		CLEAN STB	84.7	1364310
	PT 18	STB A	88.2	1300029
		CLEAN STB	88.2	1300056
22x9x16 (559/229-406)	MH 20	A-ROBUST STB	93.7	1364405
		CLEAN STB	94.6	1364416
	PT 18	STB A	95.9	1300033
		CLEAN STB	95.9	1300062

Product Overview Press-On Bands - Steel



A = drive wheels | L = for wheels | Z = for cylindrical rim | STB = steel floor
 Ks = conical rim, side split | Km = conical rim, center divided

Product Information
 Super Elastic Resilient
 Press on Bands
 Industrial Pneumatics
 ContiPressure Check
 Multi-Purpose Tires (MPPT)
 Port Tires
 LifeCycle™
 Astrum Blue
 Information

Continental Press-On Bands - Steel

Size	Ply Rating	Description	Weight (Lbs)	Article Number
Steel Bands - Press On Bands 16" - 30" (406 - 762 mm)				
16" = 406 mm Rim				
22x10x16 (559/254-406)	MH 20	STB A	104.5	1364505
		CLEAN STB	104.5	1364500
22x12x16 (559/305-406)	MC 20	STB A	46.67	1364526
		A-ROBUST STB	125.7	1300293
	MH 20	CLEAN STB	126.8	1300294
		PT 18	STB A	129.0
22x14x16 (559/356-406)	MH 20	CLEAN STB	129.0	1300063
		A-ROBUST STB	147.0	1364805
22x16x16 (559/406-406)		A-ROBUST STB	169.8	1364905
410 mm Rim				
550/160-410	MH 20	STB A	62.4	1369505
645/250-410	MH 20	A-ROBUST STB	146.4	1370505
645/300-410		A-ROBUST STB	175.7	1370805
500 mm Rim				
760/250-500	MH 20	A-ROBUST STB	192.2	1370807
22" = 559 mm Rim				
28x10x22 (711/254-559)	MH 20	A-ROBUST STB	138.9	1374605
28x12x22 (711/305-559)		A-ROBUST STB	165.1	1374805
		CLEAN STB	165.1	1374810
28x14x22 (711/356-559)	MH 20	A-ROBUST STB	203.5	1351907
28x16x22 (711/406-559)		A-ROBUST STB	225.8	1375005
33x14x22(840/356-559)		CLEAN STB	311.3	1373507
		A-ROBUST STB	311.3	1373506
30" 762 mm Rim				
40x16x30 (1016/406-762)	MH 20	STB	311.2	1300098

Product Overview Press-On Bands - Steel



A = drive wheels | L = for wheels | Z = for cylindrical rim | STB = steel floor
 Ks = conical rim, side split | Km = conical rim, center divided

Technical Data – Press-On Bands | Steel

Tire			Fork lift trucks at max. speed				
Dimensions		Tread •MH20 ×MC20 *PT18	6 mph 10 km/h				Load w
Inch	mm		Load wheel		Steering wheel		
			lbs	kg	lbs	kg	lbs
6½"		165 mm					
10x4x6½	254/102 - 165	•	1720	780	1411	640	1532
10x5x6½	254/127 - 165	•	2227	1010	1830	830	1995
10½x5x6½	267/127 - 165	•	2370	1075	1951	885	2116
	170 mm						
	230/50 - 170	•	-	-	-	-	-
	230/75 - 170	•	-	-	-	-	-
	250/80 - 170	•	-	-	-	-	-
	250/105 - 170	•	1731	785	1422	645	1543
8"		203 mm					
12x4-1/2x8	305/114-203	•	-	-	-	-	-
13x3½x8	330/89 - 203	•	1731	785	1422	645	1554
13x4½x8	330/114 - 203	•	2469	1120	2028	920	2205
13½x5½x8	343/140 - 203	•x	3318	1505	2723	1235	2965
13x5x8	330/127 - 203	x	2844	1290	2337	1060	2535
14x4½x8	356/114 - 203	•x	2579	1170	2116	960	2304
10"		254 mm					
14x5x10	356/127 - 254	•	2943	1335	2414	1095	2635
10½"		267 mm					
16x5x10½	406/127 - 267	• *	3329	1510	2734	1240	2965
16x6x10½	406/152 - 267	• *	4222	1915	3461	1570	3770
16x7x10½	406/178 - 267	•	5126	2325	4211	1910	4564
11¼"		286 mm					
15x5x11¼	381/127 - 286	•x	3064	1390	2524	1145	2734
16¼x5x11¼	413/127 - 286	•x	3362	1525	2756	1250	2998
16 1/4x6x11¼	413/152 - 286	• *	4233	1920	3472	1575	3781
16 1/4x7x11¼	413/178 - 286	•x	5104	2315	4189	1900	4553
12½"		308 mm					
17x4½x12½	432/114 - 308	•	3020	1370	2480	1125	2701
18x5x12½	457/127 - 308	•x	3627	1645	2976	1350	3230
18x6x12½	457/152 - 308	•*	4619	2095	3792	1720	4123
18x7x12½	457/178 - 308	•x *	5622	2550	4619	2095	5027
18x8x12½	457/203 - 308	• *	6625	3005	5445	2470	5919
18x9x12½	457/229 - 308	x	7628	3460	6261	2840	6812

Tire load capacity (ETRTO)								
10 mph 16 km/h			Other vehicles at max. speed					
Wheel	Steering wheel		4 mph 6 km/h		6 mph 10 km/h		10 mph 16 km/h	
	kg	lbs	kg	lbs	kg	lbs	kg	lbs
695	1290	585	1720	780	1411	640	1290	585
905	1676	760	2227	1010	1830	830	1676	760
960	1775	805	2370	1075	1951	885	1775	805
-	-	-	-	-	-	-	496	225
-	-	-	-	-	-	-	816	370
-	-	-	-	-	-	-	970	440
700	1301	590	1731	785	1422	645	1301	590
-	-	-	-	-	-	-	-	-
705	1301	590	1731	785	1422	645	1301	590
1000	1852	840	2469	1120	2028	920	1852	840
1345	2491	1130	3318	1505	2723	1235	2491	1130
1150	2127	965	2844	1290	2337	1060	2127	965
1045	1929	875	2579	1170	2116	960	1929	875
1195	2105	955	2943	1335	2414	1095	2105	955
1345	2491	1130	3329	1510	2734	1240	2491	1130
1710	3164	1435	4222	1915	3461	1570	3164	1435
2070	3836	1740	5126	2325	4211	1910	3660	1660
1240	2304	1045	3064	1390	2524	1145	2304	1045
1360	2524	1145	3362	1525	2756	1250	2524	1145
1715	3175	1440	4233	1920	3472	1575	3175	1440
2065	3825	1735	5104	2315	4189	1900	3825	1735
1225	2271	1030	3020	1370	2480	1125	2271	1030
1465	2712	1230	3627	1645	2976	1350	2712	1230
1870	3472	1575	4619	2095	3792	1720	3472	1575
2280	4222	1915	5622	2550	4619	2095	4222	1915
2685	4971	2255	6625	3005	5445	2470	4971	2255
3090	5721	2595	7628	3460	6261	2840	5721	2595

Technical Data – Press-On Bands | Steel (continued)

Tire		Tread •MH20 ×MC20 *PT18	Fork lift trucks at max. speed				
Dimensions			6 mph 10 km/h				
Inch	mm		Load wheel		Steering wheel		Load w
			lbs	kg	lbs	kg	lbs
15"		381 mm					
21x5x15	533/127 - 381	•	4057	1840	3329	1510	3627
21x6x15	533/152 - 381	×	5192	2355	4266	1935	4641
21x7x15	533/178 - 381	• *	6327	2870	5192	2355	5644
21x8x15	533/203 - 381	• *	7463	3385	6129	2780	6658
21x9x15	533/229 - 381	• *	8587	3895	7055	3200	7672
16"		406 mm					
22x6x16	559/152 - 406	•	5379	2440	4420	2005	4806
22x8x16	559/203 - 406	• *	7727	3505	6349	2880	6900
22x9x16	559/229 - 406	• *	8896	4035	7308	3315	7948
22x10x16	559/254 - 406	• ×	10075	4570	8267	3750	8995
22x12x16	559/305 - 406	• *	12412	5630	10196	4625	11089
22x14x16	559/356 - 406	•	14143	6415	12147	5510	13217
22x16x16	559/406 - 406	•	17119	7765	14065	6380	15278
		410 mm					
	550/160 - 410	•	5622	2550	4619	2095	5027
	645/250 - 410	•	10593	4805	8664	3930	9215
	645/300 - 410	•	13349	6055	10924	4955	11618
		500 mm					
	760/250 - 500	•	11993	5440	9811	4450	10439
22"		559 mm					
28x10x22	711/254 - 559	•	12037	5460	9899	4490	10759
28x12x22	711/305 - 559	• ×	14859	6740	12214	5540	13272
28x14x22	711/356 - 559	•	17681	8020	14506	6580	15785
28x16x22	711/406 - 559	•	20459	9280	16799	7620	18276
33x14x22	840/356 - 559	•	20062	9100	16413	7445	17461

Tire load capacity (ETRTO)								
10 mph 16 km/h			Other vehicles at max. speed					
Wheel	Steering wheel		4 mph 6 km/h		6 mph 10 km/h		10 mph 16 km/h	
	kg	lbs	lbs	kg	lbs	kg	lbs	kg
1645	3042	1380	4057	1840	3329	1510	3042	1380
2105	3891	1765	5192	2355	4266	1935	3891	1765
2560	4740	2150	6327	2870	5192	2355	4740	2150
3020	5589	2535	7463	3385	6129	2780	5589	2535
3480	6449	2925	8587	3895	7055	3200	6449	2925
2180	4034	1830	5379	2440	4420	2005	4034	1830
3130	5787	2625	7727	3505	6349	2880	5787	2625
3605	6669	3025	8896	4035	7308	3315	6669	3025
4080	7551	3425	10075	4570	8267	3750	7551	3425
5030	9315	4225	12412	5630	10196	4625	9315	4225
5995	11100	5035	14143	6415	12147	5510	11100	5035
6930	12831	5820	17119	7765	14065	6380	12831	5820
2280	4222	1915	5622	2550	4619	2095	4222	1915
4180	7562	3430	10593	4805	8664	3930	7562	3430
5270	9535	4325	13349	6055	10924	4955	9535	4325
4735	8565	3885	11993	5440	9811	4450	8565	3885
4880	9039	4100	12037	5460	9899	4490	9039	4100
6020	11133	5050	14859	6740	12214	5540	11133	5050
7160	13250	6010	17681	8020	14506	6580	13250	6010
8290	15344	6960	20459	9280	16799	7620	15344	6960
7920	14330	6500	20062	9100	16413	7445	14330	6500

Continental Press-On Bands - Wire Reinforced

Size	Ply Rating	Description	Weight (Lbs)	Article Number
Wire Reinforced - Press On Bands (75 - 270 mm)				
75 mm Rim				
125/50-75	MH 20	Z L	0.99	1303200
100mm Rim				
200/75-100	MH 20	Z L	3.94	1307000
120mm Rim				
230/75-120	MH 20	Z L	4.98	1310000
140mm Rim				
200/50-140	MH 20	Z A	1.94	1300001
200/50-140		Z L	1.94	1311200
250/75-140		Z L	5.5	1312000
250/130-140		Z L	9.6	1313200
150mm Rim				
200/60-150	MH 20	Z L	2.0	1314400
170mm Rim				
250/60-170	MH 20	KmL	3.3	1317100
250/60-170		Z L	3.63	1317000
250/80-170		Z A	5.2	1319405
190mm Rim				
250/60-190	MH 20	Z L	3.1	1323200
280/60-190		Z L	4.4	1323800
220mm Rim				
310/60-220	MH 20	Z L	5.21	1331800
267mm Rim = 10 1/2"				
406/152-267 (16x6x10 1/2)	MH 20	Ks A	24.8	1340705
270mm Rim				
360/85-270	MH 20	Z A	8.97	1343205

Wheel Type - POB Wire Reinforced



A = drive wheels | L = for wheels | Z = for cylindrical rim | STB = steel floor
 Ks = conical rim, side split | Km = conical rim, center divided

Anti-static
 Limited size availability on request



Continental Press-On Bands - Wire Reinforced

Size	Ply Rating	Description	Weight (Lbs)	Article Number
Wire Reinforced - Press On Bands (305 - 410 mm)				
305mm Rim				
400/65-305	MH 20	Z L	7.8	1345800
405/130-305		Z L	17.55	1350200
405/130-305		Z A	17.4	1350205
415/100-305		Z L	15.2	1349000
370mm Rim				
500/85-370	MH 20	Z L	36.6	1357800
410mm Rim				
550/120-410	MH 20	Km 8A	29.3	1367705
560/100-410		Z A	26.87	1367005

Additional POB - Additional Wire Reinforced sizes available upon request.



Anti-static
Limited size availability on request

A = drive wheels | L = for wheels | Z = for cylindrical rim | STB = steel floor
Ks = conical rim, side split | Km = conical rim, center divided

Product Information
 Super Elastic Resilient
 Press on Bands
 Industrial Pneumatics
 ContiPressure Check
 Multi-Purpose Tires (MPT)
 Port Tires
 LifeCycle™
 Astrum Blue
 Information

Technical Data – Press-On Bands | Wire Reinforced

Dimensions		Tire		Tread depth		Load wheel		Steering wheel		Fork lift trucks
Inch	mm	cylindrical	conical	1/32	mm	lbs	kg	lbs	kg	
		z	km ks /							
75 mm										
	125/50 - 75	•		4	2.9	-	-	-	-	
100 mm										
	200/75 - 100		km15	12	9.3	-	-	-	-	
120 mm										
	230/75 - 120	•		5	4.3	-	-	-	-	
140 mm										
	200/50 - 140		km15	5	4.3	-	-	-	-	
	250/75 - 140		km15	13	10.7	-	-	-	-	
	250/130 - 140	•		17	13.8	2348	1065	1929	875	
150 mm										
	200/60 - 150	•		6	4.9	-	-	-	-	
170 mm										
	250/60 - 170		km15	9	6.8	-	-	-	-	
	250/80 - 170	•		12	9.3	-	-	-	-	
	260/60 - 170	•	• km 15	10	8.3	-	-	-	-	
190 mm										
	250/60 - 190		km15	8	6.3	-	-	-	-	
	280/60 - 160	•		14	10.8	-	-	-	-	
	280/60 - 190	•		14	10.8	-	-	-	-	
220 mm										
	310/60 - 220	•		14	10.8	-	-	-	-	
10½"	267 mm									
16x6x10½	406/152 - 267		• ks 15/6			4222	1915	3461	1570	
270 mm										
	360/85 - 270		km15	9	7.2	-	-	-	-	
305 mm										
	400/65 - 305	•		14	11.4	-	-	-	-	
	415/100 - 305	•	• km 8	14	11.5	2458	1115	2017	915	
	405/130 - 305	•		15	12.2	3329	1510	2734	1240	
410 mm										
	550/120 - 410	•	• km 8	19	15.4	3858	1750	3175	1440	

Tire load capacity (ETRTO)									
at max. speed				Other vehicles at max. speed					
10 mph 16 km/h				4 mph 6 km/h		6 mph 10 km/h		10 mph 26 km/h	
Load wheel		Steering wheel							
lbs	kg	lbs	kg	lbs	kg	lbs	kg	lbs	kg
-	-	-	-	353	160	287	130	-	-
-	-	-	-	1102	500	882	400	661	300
-	-	-	-	1213	550	970	440	728	330
-	-	-	-	772	350	617	280		
-	-	-	-	1378	625	1102	500	838	380
2094	950	1764	800	-	-	-	-	1676	760
-	-	-	-	937	425	750	340	573	260
-	-	-	-	882	400	705	320	59	240
-	-	-	-	1102	500	882	400	661	300
-	-	-	-	1157	525	926	420	705	320
-	-	-	-	992	450	794	360	595	270
-	-	-	-	1268	575	1014	460	772	350
-	-	-	-	1268	575	1014	460	772	350
-	-	-	-	1433	650	1146	520	860	390
3770	1710	3164	1435	4222	1915	3461	1570	3164	1435
-	-	-	-	2315	1050	1852	840	1389	630
-	-	-	-	1984	900	1587	720	1190	540
2205	1000	1841	835	2756	1250	2205	1000	1653	750
2965	1345	2491	1130	3329	1510	2734	1240	2491	1130
3450	1565	2899	1315	4023	1825	3197	1450	2425	1100



Continental Tires

Right for every purpose

ContiRV20

Designed for Industrial Ground Service Support Vehicles, Industrial Tow Tractors, Sweepers and Forklifts, the RV20 delivers increased operating hours in high speed applications.

- › High transport speed
- › High wet/dry traction
- › Long service life

ContiRT20

Designed for Forklifts and Material Handling Equipment, the RT20 delivers increased operating hours with superior traction on unimproved surfaces in heavy duty applications.

- › Extreme durability
- › Excellent comfort
- › High traction



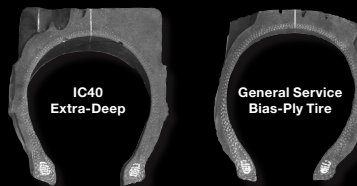
Continental IC40 - with TREAD SAVER!

Tough Times Call for even Tougher Tires

Lowest price does not equal lowest cost!

With its aggressive, extra deep tread design (up to 40/32nds) and heavy-ply sidewalls, Continental's IC40 industrial tires last longer and hold up in grueling applications where other bias-ply tires fail.

Most bias-ply tires crown in the center tread area when inflated, causing this area to wear out much faster than the outer tread areas. With the IC40's "Tread Saver" design, the center tread starts out in a recessed position until the tire is inflated at which point the center tread becomes flush with outer tread areas. This unique, concave tread design is just another reason Continental's IC40 wears more evenly and lasts longer.



Features

- › Extra deep tread (up to 40/32nds)
High wet/dry traction
- › Concave „Tread Saver” design
- › Thick, heavy-ply sidewalls

Benefits

- › Provides longer wear and maximum cut & puncture resistance
- › Virtually eliminates uneven, premature tread wear
- › Outstanding protection from cut & impact damage. Provides increased vehicle stability

Continental Industrial Pneumatics

Size	Ply Rating	Description	Weight (Lbs)	Article Number	
Industrial Pneumatics - 4"-8"					
4" Custom Rim					
3.00-4	4	IC 10	2.0	0700330	
		Valve 38 G 90	0.6	0780141	
4.00-4	6	IC 10	3.8	0700340	
		Valve 38 G 90	0.6	0780141	
8" Custom Rim					
4.00-8	6	IC 10	5.4	0700360	
		IC 10	5.5	0700362	
	Tube Airfix	Valve 41.5 G 70 Off Center	0.9	0780105	
	Flap	85-8 Off Center	0.5	0790301	
15x4 1/2-8 (125/75-8)	12	IC 36	7.9	0701065	
125/75R8 (15x4 1/2R8) Radial TL		IC 70	12.1	0745065	
TSR		3.00/3.25TL8	0.7	0793002	
Tube Airfix		Valve 43 D-60	1.4	0780109	
Flap		85-8 Off Center	0.5	0790301	
5.00-8	8	IC 10	9.9	0700370	
		Extra Deep IC 40	15.8	0702070	
5.00R8 Radial TL	10	IC 70	17.4	0745070	
		TSR	3.00/3.25TL8	5.5	0793017
		Tube Airfix	Valve 41.5 G 70 Off Center	1.3	0780107
		Flap	85-8 Off Center	0.5	0790301
16x6-8 (150/75-8)	16	IC 12	10.1	0700584	
150/75R8 (16x6R8) Radial TL		IC 70	17.2	0745084	
TSR		4.33TL8	5.5	0793003	
Tube Airfix		Valve 60 D	1.5	0780111	
Flap		115-8	1.7	0790302	

Product Overview



TL = Tubeless | TT = Tube-Type

Continental Industrial Pneumatics

Size	Ply Rating	Description	Weight (Lbs)	Article Number
Industrial Pneumatics - 8"-10"				
8" Custom Rim				
18x7-8 (180/70-8)		IC 12	12.8	0700588
		Extra Deep IC 40	18.8	0702088
180/70R8 (18x7R8) Radial TL		ContiRV20	23.0	0730011
		ContiIRT20	26.7	0730029
TSR		4.33TL8	5.5	0793003
Tube Airfix		Valve 60 D	1.5	0780111
Flap		115-8	1.7	0790302
9" Custom Rim				
6.00-9	12	IC 10	16.0	0700401
		Extra Deep IC 40	22.6	0702101
6.00R9 Radial TL		ContiRV20	27.9	0710001
		ContiIRT20	31.7	0730027
TSR		4.00TL9	1.4	0793033
Tube Airfix		Valve 41.5 G 70	1.7	0780112
Flap		100-9 Off Center	1.1	0790304
21x8-9	16	IC 12	22.3	0700605
	14	Extra Deep IC 40	27.6	0702104
Tube Airfix		Valve 41.5 G 70	1.7	0780112
Flap		150-9 Off Center	2.0	0790305
10" Custom Rim				
6.50-10	14	IC 10	18.8	0700406
		Extra Deep IC 40	29.3	0702106
6.50R10 Radial TL		ContiRV20	36.2	0710013
		ContiIRT20	43.4	0730028
TSR		5.00/5.50TL10	5.5	0793005
Tube Airfix		Valve 41.5 G 70 Off Center	1.8	0780115
Flap		130-10 Off Center	1.3	0790307

Product Overview



TL = Tubeless | TT = Tube-Type

Product Information
 Super Elastic Resilient
 Press on Bands
 Industrial Pneumatics
 ContiPressure Check
 Multi-Purpose Tires (MPT)
 Port Tires
 LifeCycle™
 Astrum Blue
 Information

Continental Industrial Pneumatics

Size	Ply Rating	Description	Weight (Lbs)	Article Number
Industrial Pneumatics - 10"-12"				
10" Custom Rim				
7.50-10	12	IC10	29.3	0700117
23x9-10 (225/75-10)	14	IC 12	24.2	0700608
	20	IC 12	27.0	0700611
Extra Deep IC 40		42.8	0730050	
ContiRV20		42.4	0730039	
ContiRT20		48.8	0730026	
6.50TL10		5.5	0793007	
225/75R10 (23x9R10) Radial TL	TSR	Valve 60 D	2.1	0780117
		180-10	1.7	0790308
Flap				
12" Custom Rim				
7.00-12	14	IC 10	25.1	0700421
		Extra Deep IC 40	37.5	0702121
7.00R12 Radial TL	16	IC 10	30.0	0700422
		Extra Deep IC 40	42.6	0702122
TSR	16	ContiRV20	48.2	0730007
		ContiRT20	58.3	0730035
Tube Airfix	16	5.00TL12	3.5	0793001
		Valve 75 D	2.3	0780120
Flap	16	130-12	1.9	0790310
27x10-12 (250/75-12)	20	Extra Deep IC 40	56.5	0702136
		Extra Deep IC 12	56.5	0700633
		Extra Deep IC 30	56.5	0700131
250/75R12 (27x10R12) Radial TL	20	ContiRT20	81.7	0730032
		8.00TL12	5.5	0793011
TSR	20	Valve 60 D Off Center	4.0	0780121
Tube Airfix	20	220-12 Off Center	3.2	0790311
Flap				

Product Overview



TL = Tubeless | TT = Tube-Type

Continental Industrial Pneumatics

Size	Ply Rating	Description	Weight (Lbs)	Article Number	
Industrial Pneumatics - 13"-15"					
13" Custom Rim					
165R13 Radial TL		ContiRV20	36.2	0710014	
15" Custom Rim					
7.00R15 (29x8R15) Radial TL	14	ContiRV20	58.2	0730010	
		ContiRT20	58.4	0730025	
		IC 10	58.4	0700666	
		TSR	5.50TL15	5.5	0793006
		Tube Airfix	Valve 75 D-74	3.0	0780122
		Flap	170-15	3.6	0790318
7.50R15	14	Extra Deep IC 40	57.6	0702270	
7.50R15 Radial TL	16	ContiRV20	66.8	0730012	
		Avail. Qtr 4 of 2013	ContiRT20	78.3	0730034
		TSR	6.00/6.50TL15	5.5	0793008
		Tube Airfix	Valve 75 D-74	3.5	0780129
		Flap	170-15	3.6	0790318
			Extra Deep IC 40	71.9	0702276
8.25-15	18	IC 10	71.9	0700677	
8.25R15 Radial TL	18	ContiRV20	98.6	0730040	
		ContiRT20	99.2	0730037	
		ConRad HT1	98.3	0730006	
		TSR	6.50TL15	13.3	0793000
		Tube Airfix	Valve 75 D-74	4.2	0780124
		Flap	170-15	3.6	0790318
28x9-15 (8.15-15) (225/75-15)	14	IC 12	32.4	0700180	
		Extra Deep IC 40	44.6	0702180	
225/75R15 (28x9R15) Radial TL	16	ContiRT20	67.0	0730030	
		TSR	7.00TL15	5.5	0793029
		Tube Airfix	Valve 95 D-74	3.5	0780130
		Flap	190-15	3.8	0790319

Product Overview



TL = Tubeless | TT = Tube-Type

Product Information
Super Elastic Resilient
Press on Bands
Industrial Pneumatics
ContiPressure Check
Multi-Purpose Tires (MPT)
Port Tires
LifeCycle™
Astrum Blue
Information

Continental Industrial Pneumatics

Size	Ply Rating	Description	Weight (Lbs)	Article Number	
Industrial Pneumatics - 15"-16-1/2"					
15" Custom Rim					
250-15 (250/70-15)	18	Extra Deep IC 40	60.0	0702257	
250/70R15 (250R15) Radial TL		ContiRV20	79.2	0730043	
		ContiRT20	88.5	0730024	
		TSR	7.00/7.50TL15	5.5	0793031
		Tube Airfix	Valve 95 D-74	3.5	0780130
		Flap	190-15	3.8	0790319
300-15 (315/70-15)	22	Extra Deep IC 40	91.7	0702264	
315/70R15 (300R15) Radial TL		ContiRV20	115.5	0730041	
		ContiRT20	130.7	0730023	
TSR		8.00TL15	12.7	0793030	
Tube Airfix		Valve 95 D-Z	4.5	0780133	
Bias Flap		190-15	3.8	0790319	
Radial Flap		240-15	4.6	0790323	
355/65-15 (350-15)	24	IC 12	106.1	0740300	
355/65R15 (350R15) Radial TL		Extra Deep IC 40	137.5	0742300	
		ContiRT20	139.8	0730022	
TSR		355/65-15 x-ply TL (9.75)	5.5	0793026	
Tube Airfix		Valve 95 D-Z	4.5	0780133	
Flap		240-15	4.6	0790323	
Valve Protector		Plate	0.0	1732501	
16" Custom Rim					
225/75R16 TL	10	ContiRV20	60.1	0730052	
16-1/2" Custom Rim					
8.75R16.5 TL	12	ContiRV20	60.6	0730051	

Product Overview



TL = Tubeless | TT = Tube-Type

Continental Industrial Pneumatics

Size	Ply Rating	Description	Weight (Lbs)	Article Number
Industrial Pneumatics - 15"-16-1/2"				
20" Custom Rim				
10.00-20 (290/95-20)	18	IC 40	167.7	0730061
10.00R20 Radial TL (290/95R20)		ContiRT20	185.5	0730031
TSR		20" x-ply TL 7.5/8.0/8.5	5.5	0793028
TSR		20" radial TL 7.5/8.0/8.5	20.7	0793027
Tube Airfix		Valve 127 D-Z	7.1	0582010
Flap		190-20	4.6	0790320
Valve Protector		Plate	0.0	1732501
11.00R20		ContiRT20	199.2	0730033
TSR		20" radial TL 7.5/8.0/8.5	20.7	0793027
Tube Airfix		Valve 127 D-Z	8.2	0582047
Flap	230-20	5.5	0790322	
Valve Protector	Plate	0.0	1732501	
12.00-20 (330/95-20)	20	IC 40	207.6	0730060
12.00R20 Radial TL (330/95R20)		ContiRV20	220.1	0730042
		ContiRT20	220.2	0730036
		ConRad HT1	220.1	0730002
TSR		20" x-ply TL 7.5/8.0/8.5	5.5	0793028
TSR		20" radial TL 7.5/8.0/8.5	20.7	0793027
Tube Airfix		Valve 127 D-Z	9.6	0582015
Flap		230-20	5.5	0790322
Valve Protector		Plate	0.0	1732501

Product Overview



TL = Tubeless | TT = Tube-Type

Product Information
 Super Elastic Resilient
 Press on Bands
 Industrial Pneumatics
 ContiPressure Check
 Multi-Purpose Tires (MPT)
 Port Tires
 LifeCycle™
 Astrum Blue
 Information

Continental Industrial Pneumatics

Size	Ply Rating	Description	Weight (Lbs)	Article Number
Industrial Pneumatics - 22.5"				
22-1/2" Custom Rim				
280/75R22.5 TL		TractorMaster	88.19	0730024
300/80R22.5		Terminal	136.8	0730044
310/80R22.5		TractorMaster	167.5	0730055
Flap prices when ordered w/o tires (suitable for both radial and bias tires unless otherwise indicated)				
for 4.00-8, 125/75(R)8, 5.00(R)8		85-8 Off Center	0.5	0790301
for 150/75R8, 180/70R8		115-8	1.7	0790302
for 6.00R9		100-9 Off Center	1.1	0790304
for 21x8-9		150-9 Off Center	2.0	0790305
for 6.50R10		130-10 Off Center	1.3	0790307
		180-10	1.7	0790308
for 7.00R12		130-12	1.9	0790310
for 250/75R12		220-12 Off Center	3.2	0790311
for 7.00R15, 7.50R15, 8.25R15		170-15	3.6	0790318
for 225/75R15, 250/70R15, 315/70-15		190-15	3.8	0790319
for 315/70R15, 355/65R15		240-15	4.6	0790323
for 10.00R20		190-20	4.6	0790320
for 11.00R20, 12.00R20		230-20	5.5	0790322

Product Overview



TL = Tubeless | TT = Tube-Type

Notes

Product Information

Super Elastic Resilient

Press on Bands

Industrial Pneumatics

ContiPressure Check

Multi-Purpose Tires (MPT)

Port Tires

LifeCycle™

Astrum Blue

Information

Technical Data – Industrial Pneumatics | Radial

Tire				Rim	TSR	Tube and Valve		Flap	Tire dimensions(mm)					
Size	Tread	PR	LI/Speed	Rim	TSR Art. No.	Tube	Valve	Flap	Standard Value (ETRTO)				Actual value	
									Section Width		Overall Diameter		Section Width (+-1%)	
									inch	mm	inch	mm	inch	mm
8"														
125/75 R 8	IC70	12	100 A5	3.00 D-8	0793002	15x4½-8 / 125/75-8	43D-60	85-8	5.08	129	15.71	399	4.72	120
5.00 R 8	IC70	10	111 A5	3.00 D-8	0793017	5.00-8	41.5G-70	85-8	5.47	139	18.74	476	5.20	132
150/75 R 8	IC70	16	113 A5	4.33 R-8	0793003	16x6-8 / 18x7-8	41.5G70 / 60D	115-8	6.30	160	17.28	439	5.91	150
180/70 R 8	ContiRT20	16	125 A5	4.33 R-8	0793003	16x6-8 / 18x7-8	41.5G70 / 60D	115-8	7.20	183	18.31	465	6.81	173
180/70 R 8	ContiRV20	16	125 A5	4.33 R-8	0793003	16x6-8 / 18x7-8	41.5G70 / 60D	115-8	7.20	183	18.31	465	6.73	171
9"														
6.00 R 9	ContiRT20	12	121 A5	4.00 E-9	0793004	6.00-9 / 21x8-9	41.5G70 / 60D	100-9	6.61	168	21.69	551	6.38	162
6.00 R 9	ContiRV20	12	121 A5	4.00 E-9	0793004	6.00-9 / 21x8-9	41.5G70 / 60D	100-9	6.61	168	21.69	551	6.42	163
10"														
6.50 R 10	ContiRT20	14	128 A5	5.00 F-10	0793005	6.50/7.50-10	41.5G70 / 60D	130-10	7.32	186	23.62	600	7.13	181
6.50 R 10	ContiRV20	14	128 A5	5.00 F-10	0793005	6.50/7.50-10	41.5G70 / 60D	130-10	7.32	186	23.62	600	7.20	183
225/75 R 10	ContiRT20	20	142 A5	6.50 F-10	0793007	23x9-10 / 225/75-10	60D / 75D	180-10	9.41	239	23.86	606	8.70	221
225/75 R 10	ContiRV20	20	142 A5	6.50 F-10	0793007	23x9-10 / 225/75-10	60D / 75D	180-10	9.41	239	23.86	606	8.90	226
12"														
7.00 R 12	ContiRT20	16	136 A5	5.00 S-12	0793001	7.00-12	60D / 75D	130-12	7.95	202	26.97	685	7.56	192
7.00 R 12	ContiRV20	16	136 A5	5.00 S-12	0793001	7.00-12	60D / 75D	130-12	7.95	202	26.97	685	7.64	194
250/75 R 12	ContiRT20	20	152 A5	8.00 G-12	0793011	27x10-12 / 250/75-12	60D / 75D	220-12	10.79	274	27.44	697	10.28	261
13"														
165 R 13	ContiRV20	-	102 A6	4.50 x 13 B	-	-	-	-	6.85	174	23.86	606	6.57	167
15"														
7.00 R 15	ContiRV20	14	143 A5	5.5-15	0793006	7.00-15 / 200-15	75D-74	170-15 reinforced	8.15	207	29.96	761	7.91	201
7.00 R 15	ContiRT20	14	143 A5	5.5-16	0793007	7.00-15 / 200-16	75D-75	170-15 reinforced	8.15	207	29.96	761	7.83	199
7.50 R 15	ContiRV20	16	146 A5	6.0-15	0793008	7.50-15 / 8.25-15	75D-74 / 95D-74	170-15 reinforced	8.78	223	30.98	787	8.62	219
8.25 R 15	ConRad HT1	18	153 A5	6.5-15	0793000	7.50-15 / 8.25-15	75D-74 / 105D	170-15 reinforced	9.69	246	33.58	853	9.37	238
8.25 R 15	ContiRT20	18	153 A5	6.5-15	0793000	7.50-15 / 8.25-15	75D-74 / 105D	170-15 reinforced	9.69	246	33.58	853	9.33	237
8.25 R 15	ContiRV20	18	153 A5	6.5-15	0793000	7.50-15 / 8.25-15	75D-74 / 105D	170-15 reinforced	9.69	246	33.58	853	9.37	238
225/75 R 15	ContiRT20	16	149 A5	7.0-15	0793009	28x9-15 / 250/70-15	75D-74 / 95D-74	190-15 reinforced	9.65	245	28.86	733	8.74	222
250/70 R 15	ContiRT20	18	153 A5	7.0-15	0793015	28x9-15 / 250/70-15	75D-74 / 95D-74	190-15 reinforced	10.39	264	29.33	745	9.53	242
250/70 R 15	ContiRV20	18	153 A5	7.0-15	0793015	28x9-15 / 250/70-15	75D-74 / 95D-74	190-15 reinforced	10.39	264	29.33	745	9.45	240
315/70 R 15	ContiRT20	22	165 A5	8.0-15	0793012	300-15 / 355/65-15	95D-74 / 95D-Z	240-15 reinforced	12.72	323	33.11	841	12.32	313
315/70 R 15	ContiRV20	22	165 A5	8.0-15	0793012	300-15 / 355/65-15	95D-74 / 95D-Z	240-15 reinforced	12.72	323	33.11	841	11.97	304
355/65 R 15	ContiRT20	-	170 A5	9.75-15	in preparation	300-15 / 355/65-15	95D-74 / 95D-Z	240-15 reinforced	14.69	373	33.90	861	13.23	336
16"														
225/75 R 16	ContiRV20	10	116 A8	6.0-16	-	-	-	-	9.13	232	29.84	758	8.65	220
8.75 R 16.5	ContiRV20	12	128 A8	6.75-16.5	-	-	-	-	9.72	247	30.31	770	8.82	224

Tire dimensions(mm)						Inflation Pressure		Tire Load capacity (ETRTO)													
Actual value		Static Radius (+-1%)		Tread depth		bar	PSI	Other vehicles at max. speed										Fork lift trucks max 16 mph 25 km/h			
Overall Diameter (+-1%)	inch	mm	inch	mm	1/32			mm	Stationary		6 mph 10 km/h		16 mph 25 km/h		25 mph 40 km/h		31 mph 50 km/h		Load wheel		Steering wheel
						lbs	kg		lbs	kg	lbs	kg	lbs	kg	lbs	kg	lbs	kg	lbs	kg	lbs
15.20	386	6.93	176	7	5.5	10	145	2668	1210	2293	1040	1764	800	1565	710	1477	670	2293	1040	1764	800
18.15	461	8.23	209	11	8.5	10	145	3638	1650	3131	1420	2403	1090	2138	970	2028	920	3131	1420	2403	1090
16.73	425	7.60	193	10	7.8	10	145	3836	1740	3296	1495	2535	1150	2260	1025	2138	970	3296	1495	2535	1150
18.15	461	8.07	205	24	19	10	145	5501	2495	4729	2145	3638	1650	3241	1470	-	-	4729	2145	3638	1650
18.27	464	8.19	208	16	13	10	145	5501	2495	4729	2145	3638	1650	3241	1470	3064	1390	4729	2145	3638	1650
21.22	539	9.76	248	31	24.5	10	145	4828	2190	4156	1885	3197	1450	2745	1245	-	-	4156	1885	3197	1450
20.94	532	9.61	244	19	14.5	10	145	4828	2190	4156	1885	3197	1450	2844	1290	2690	1220	4156	1885	3197	1450
23.23	590	10.71	272	37	29	10	145	5997	2720	5159	2340	3968	1800	3538	1605	-	-	5159	2340	3968	1800
23.07	586	10.59	269	21	16.5	10	145	5997	2720	5159	2340	3968	1800	3527	1600	3340	1515	5159	2340	3968	1800
23.31	592	10.47	266	30	24	10	145	8830	4005	7595	3445	5842	2650	5203	2360	-	-	7595	3445	5842	2650
23.07	586	10.28	261	21	16.5	10	145	8830	4005	7595	3445	5842	2650	5203	2360	4916	2230	7595	3445	5842	2650
26.57	675	12.24	311	37	29	10	145	7463	3385	6426	2915	4938	2240	4398	1995	4156	1885	6426	2915	4938	2240
26.34	669	12.09	307	21	17	10	145	7463	3385	6426	2915	4938	2240	4398	1995	4156	1885	6426	2915	4938	2240
27.01	686	12.20	310	37	29	10	145	11828	5365	10174	4615	7826	3550	6967	3160	-	-	10174	4615	7826	3550
23.54	598	11.02	280	23	18	4.5	65.25	-	-	-	-	1874	850	-	-	-	-	-	-	-	-
28.78	731	13.27	337	21	17	10	145	9072	4115	7804	3540	6008	2725	5346	2425	5049	2290	7804	3540	6008	2725
28.78	731	13.23	336	21	17	10	145	9072	4115	7804	3540	6008	2725	5346	2425	5049	2290	7804	3540	6008	2725
30.31	770	13.90	353	25	19.5	10	145	9987	4530	8598	3900	6614	3000	5886	2670	5556	2520	8598	3900	6614	3000
33.15	842	15.28	388	45	36	10	145	12158	5515	10461	4745	8047	3650	7165	3250	-	-	10461	4745	8047	3650
32.83	834	15.00	381	43	34.5	10	145	12158	5515	10461	4745	8047	3650	7165	3250	-	-	10461	4745	8047	3650
33.15	842	15.16	385	44	35	10	145	12158	5515	10461	4745	8047	3650	7165	3250	-	-	10461	4745	8047	3650
28.39	721	12.99	330	31	25	10	145	10825	4910	9315	4225	7165	3250	6382	2895	-	-	9315	4225	7165	3250
29.13	740	13.31	338	35	28	10	145	12158	5515	10472	4750	8047	3650	7165	3250	-	-	10461	4745	8047	3650
29.25	743	13.31	338	31	25	10	145	12158	5515	10461	4745	8047	3650	7165	3250	-	-	10461	4745	8047	3650
32.91	836	14.72	374	44	35	10	145	17152	7780	14760	6695	11354	5150	10108	4585	-	-	14760	6695	11354	5150
32.68	830	14.49	368	38	30	10	145	17152	7780	14760	6695	11354	5150	10108	4585	-	-	14760	6695	11354	5150
33.03	839	14.41	366	n.a.	n.a.	10	145	19974	9060	17196	7800	13228	6000	-	-	-	-	17196	7800	13228	6000
29.39	747	13.91	353.3	25	19.5	6.5	94.25	-	-	-	-	-	-	10108	1250	-	-	-	-	-	-
29.88	759	13.91	353.4	25	19.5	6.6	95.7	-	-	-	-	-	-	10108	1800	-	-	-	-	-	-

Technical Data – Industrial Pneumatics | Radial (continued)

Tire				Rim	TSR	Tube and Valve		Flap	Tire dimensions(mm)						
Size	Tread	PR	LI/Speed	Rim	TSR Art. No.	Tube	Valve	Flap	Standard Value (ETRTO)				Actual value		
									Section Width		Overall Diameter		Section Width (+-1%)		
									inch	mm	inch	mm	inch	mm	
20"															
10.00 R 20	ContiRT20	18	166 A5	7.5 - 20	0793010	10.00-20	127D-Z	190-20 reinforced	11.69	297	42.24	1073	11.38	289	
11.00 R 20	ContiRT20	18	169 A5	8.0 - 20	0793011	11.00/12.00-20	127D-Z	230-20 reinforced	12.17	309	43.46	1104	11.34	288	
12.00 R 20	ConRad HT1	20	176 A5	8.5 - 20	0793010	11.00/12.00-20	127D-Z	230-20 reinforced	13.31	338	45.04	1144	12.24	311	
12.00 R 20	ContiRT20	20	176 A5	8.5 - 20	0793010	11.00 / 12.00-20	127D-Z	230-20 reinforced	13.31	338	45.04	1144	12.13	308	
12.00 R 20	ContiRV20	20	176 A5	8.5 - 20	7930100	11.00/12.00-20	127D-Z	230-20 reinforced	13.31	338	45.04	1144	12.24	311	
22"															
300/80 R 22.5	Terminal	-	172 A8	8.25 - 900	-	-	-	-	12.32	313	42.17	1071	12.09	307	
310/80 R 22.	TractorMaster	-	175 A8	8.25 - 900	-	-	-	-	12.36	314	42.83	1088	12.17	309	

Technical Data – Industrial Pneumatics | Cross-Ply

Tire				Rim	Tube and Valve		Flap	Tire Dimensions							
Size	Tread	PR	LI/Speed	Rim	Tube	Valve	Flap	Standard Value (ETRTO)				Actual Value			
								Section Width		Overall Diameter		Section Width (+-1%)		Overall Dia. (+-1%)	
								inch	mm	inch	mm	inch	mm	inch	mm
4"															
4.00 - 4	IC10	6	77 A5	2.50 C-4	4.00-4	38G-90	-	4.57	116	12.52	318	4.21	107	12.28	312
8"															
4.00 - 8	IC10	6	90 A5	3.00 D-8	4.00-8	41,5G-70	85-8	4.76	121	16.61	422	4.49	114	16.46	418
4.00 - 8	IC10	10	97 A5	3.00 D-8	4.00-8	41,5G-70	85-8	4.88	124	16.61	422	4.49	114	16.46	418
15 X 4 1/2 - 8	IC36	12	100 A5	3.00 D-8	15x4 1/2 - 8	43D-60	85-8	5.12	130	15.47	393	4.84	123	14.88	378
5.00 - 8	IC10	8	106 A5	3.00 D-8	5.00-8	41,5G-70	85-8	5.63	143	18.74	476	5.20	132	18.46	469
5.00 - 8	IC40	8	106 A5	3.00 D-8	5.00-8	41,5G-70	85-8	5.63	143	19.13	486	5.35	136	18.70	475
16 X 6 - 8	IC12	16	113 A5	4.33 R-8	16x6-8 / 18x7-8	41.5G70 / 60D	115-8	6.46	164	17.09	434	5.63	143	16.61	422
18 X 7 - 8	IC12	16	125 A5	4.33 R-8	16x6-8 / 18x7-8	41.5G70 / 60D	115-8	7.36	187	18.54	471	6.42	163	18.15	461
18 X 7 - 8	IC40	16	125 A5	4.33 R-8	16x6-8 / 18x7-8	41.5G70 / 60D	115-8	7.36	187	18.90	480	6.77	172	18.54	471
9"															
6.00 - 9	IC10	12	121 A5	4.00 E-9	6.00-9 / 21x8-9	41.5G70 / 60D	100-9	6.81	173	21.69	551	6.22	158	21.22	539
6.00 - 9	IC40	12	121 A5	4.00 E-9	6.00-9 / 21x8-9	41.5G70 / 60D	100-9	6.81	173	22.13	562	6.30	160	21.34	542
21 X 8 - 9	IC12	16	134 A5	9.00 E-9	6.00-9 / 21x8-9	41.5G70 / 60D	150-9	8.50	216	21.50	546	7.64	194	20.43	519
21 X 8 - 9	IC40	14	131 A5	6.00 E-9	6.00-9 / 21x8-9	41.5G70 / 60D	150-9	8.50	216	21.93	557	7.68	195	20.98	533

Tire dimensions(mm)						Inflation Pressure		Tire Load capacity (ETRTO)													
Actual value		Static Radius (+-1%)		Tread depth		bar	PSI	Other vehicles at max. speed										Fork lift trucks max 16 mph 25 km/h			
Overall Diameter (+-1%)		inch	mm	1/32	mm			Stationary	6 mph 10 km/h	16 mph 25 km/h	25 mph 40 km/h	31 mph 50 km/h	Load wheel	Steering wheel							
inch	mm	inch	mm			lbs	kg	lbs	kg	lbs	kg	lbs	kg	lbs	kg	lbs	kg	lbs	kg		
42.09	1069	19.49	495	44	35	10	145	17637	8000	15190	6890	11684	5300	10395	4715	-	-	15190	6890	11684	5300
43.07	1094	19.88	505	48	38	10	145	19312	8760	16623	7540	12787	5800	11376	5160	-	-	16623	7540	12787	5800
44.88	1140	20.39	518	45	36	10	145	23634	10720	20349	9230	15653	7100	13933	6320	-	-	20349	9230	15653	7100
45.00	1143	20.55	522	50	40	10	145	23634	10720	20349	9230	15653	7100	13933	6320	-	-	20349	9230	15653	7100
44.88	1140	20.28	515	45	36	10	145	23634	10720	20349	9230	15653	7100	13933	6320	-	-	20349	9230	15653	7100
41.50	1054	18.78	477	23	18	10	145	-	-	17857	8100	15653	7100	13889	6300	-	-	-	-	-	-
42.13	1070	18.98	482	30	24	10	145	-	-	19775	8970	17108	7760	15212	6900	-	-	-	-	-	-

Actual Value				Inflation Pressure		Tire Load Capacity (ETRTO)													
Static Radius (+-1%)		Tread Depth		bar	PSI	Other Vehicles at Max. Speed										Fork Lift Trucks Max. 16 mph 25 km/h			
inch	mm	1/32	mm			Stationary	6 mph 10 km/h	16 mph 25 km/h	25 mph 40 km/h	31 mph 50 km/h	Load Wheel	Steering Wheel							
inch	mm	1/32	mm	lbs	kg	lbs	kg	lbs	kg	lbs	kg	lbs	kg	lbs	kg	lbs	kg	lbs	kg
5.51	140	7	5.2	8	116	1,367	620	1,179	535	908	412	805	365	761	345	1,179	535	908	412
7.56	192	7	5.5	8	116	1,995	905	1,720	780	1,323	600	1,179	535	1,113	505	1,720	780	1,323	600
7.56	192	7	5.5	10	145	2,425	1,100	2,094	950	1,609	730	1,433	650	1,356	615	2,094	950	1,609	730
6.81	173	7	5.2	10	145	2,668	1,210	2,293	1,040	1,764	800	1,565	710	1,477	670	2,293	1,040	1,764	800
8.43	214	8	6.5	8.25	120	3,164	1,435	2,723	1,235	2,094	950	1,863	845	1,764	800	2,723	1,235	2,094	950
8.78	223	22	17.5	8.25	120	3,164	1,435	2,723	1,235	2,094	950	1,863	845	-	-	2,723	1,235	2,094	950
7.56	192	9	7.3	10	145	3,836	1,740	3,296	1,495	2,535	1,150	2,260	1,025	2,138	970	3,296	1,495	2,535	1,150
8.11	206	9	7.3	10	145	5,490	2,490	4,729	2,145	3,638	1,650	3,241	1,470	3,053	1,385	4,729	2,145	3,638	1,650
8.62	219	21	16.5	10	145	5,490	2,490	4,729	2,145	3,638	1,650	3,241	1,470	-	-	4,729	2,145	3,638	1,650
9.65	245	13	10.5	10	145	4,828	2,190	4,156	1,885	3,197	1,450	2,844	1,290	2,690	1,220	4,156	1,885	3,197	1,450
9.96	253	24	19	10	145	4,828	2,190	4,156	1,885	3,197	1,450	2,844	1,290	-	-	4,156	1,885	3,197	1,450
9.21	234	14	11	10	145	7,055	3,200	6,074	2,755	4,674	2,120	4,156	1,885	3,924	1,780	6,074	2,755	4,674	2,120
9.61	244	25	19.5	9	131	6,493	2,945	5,589	2,535	4,299	1,950	3,825	1,735	-	-	5,589	2,535	4,299	1,950

Technical Data – Industrial Pneumatics | Cross-Ply (cont...)

Tire				Rim	Tube and Valve		Flap	Standard Value (ETRTO)				Tire Dimensions			
Size	Tread	PR	LI/Speed	Rim	Tube	Valve	Flap	Section Width		Overall Diameter		Section Width (+1%)		Overall Dia. (+1%)	
								inch	mm	inch	mm	inch	mm	inch	mm
10"															
6.50-10	IC10	14	128 A5	5.00 F-10	6.50/7.50-10	41.5G70 / 60D	130-10	7.52	191	23.62	600	6.85	174	22.87	581
6.50-10	IC40	14	128 A5	5.00 F-10	6.50/7.50-10	41.5G70 / 60D	130-10	7.52	191	23.62	600	7.13	181	23.31	592
7.50-10	IC10	12	133 A5	5.50 F-10	6.50/7.50-10	41.5G70 / 60D	130-10	8.82	224	25.91	658	8.03	204	24.25	616
23 X 9-10	IC12	14	134 A5	6.50 F-10	23x9-10	60D / 75D	180-10	9.57	243	23.90	607	8.58	218	22.64	575
23 X 9-10	IC12	20	142 A5	6.50 F-10	23x9-10	60D / 75D	180-10	9.57	243	23.90	607	8.58	218	22.64	575
23 X 9-10	IC40	20	142 A5	6.50 F-10	23x9-10	60D / 75D	180-10	9.57	243	23.90	607	8.58	218	23.43	595
12"															
7.00-12	IC10	14	134 A5	5.00 S-12	7.00-12	60D / 75D	130-12	8.15	207	26.97	685	7.48	190	26.26	667
7.00-12	IC10	16	136 A5	5.00 S-12	7.00-12	60D / 75D	130-12	8.15	207	26.97	685	7.48	190	26.26	667
7.00-12	IC40	14	134 A5	5.00 S-12	7.00-12	60D / 75D	130-12	8.15	207	26.97	685	7.72	196	26.34	669
7.00-12	IC40	16	136 A5	5.00 S-12	7.00-12	60D / 75D	130-12	8.15	207	26.97	685	7.72	196	26.34	669
27 X 10-12	IC12	14	143 A5	8.00 G-12	27x10-12	60D / 75D	220-12	10.83	275	27.72	704	9.57	243	26.57	675
27 X 10-12	IC12	20	152 A5	8.00 G-12	27x10-12	60D / 75D	220-12	10.83	275	27.72	704	9.57	243	26.57	675
27 X 10-12	IC30	14	143 A5	8.00 G-12	27x10-12	60D / 75D	220-12	10.83	275	27.72	704	10.04	255	26.42	671
27 X 10-12	IC40	14	143 A5	8.00 G-12	27x10-12	60D / 75D	220-12	10.83	275	27.72	704	9.57	243	26.97	685
27 X 10-12	IC40	20	152 A5	8.00 G-12	27x10-12	60D / 75D	220-12	10.83	275	27.72	704	9.57	243	26.97	685
15"															
7.00-15	IC10	12	138 A5	5.5-15	7.00-15	75 D-74	170-15	8.39	213	29.96	761	7.68	195	28.98	736
7.50-15	IC10	16	146 A5	6.0-15	7.50-15	75D-74 / 95D-74	170-15	9.02	229	30.98	787	8.19	208	29.92	760
7.50-15	IC40	14	144 A5	6.0-15	7.50-15	75D-74 / 95D-74	170-15	9.02	229	31.61	803	8.27	210	30.47	774
8.25-15	IC10	18	153 A5	6.5-15	8.25-15	75D-74 / 105D	170-15 reinforced	9.96	253	33.58	853	8.98	228	32.05	814
8.25-15	IC40	18	153 A5	6.5-15	8.25-15	75D-74 / 105D	170-15 reinforced	9.96	253	33.58	853	9.37	238	32.91	836
28 X 9-15	IC12	14	145 A5	7.5-15	28x9-15	75D-74 / 95D-74	190-15 reinforced	9.17	233	28.39	721	8.31	211	27.60	701
28 X 9-15	IC40	14	146A5	7.0-15	28x9-15	75D-74 / 95D-74	190-15 reinforced	9.17	233	28.94	735	8.78	223	28.35	720
250-15	IC12	18	153 A5	7.0-15	250-15	75D-74 / 95D-74	190-15 reinforced	10.43	265	29.53	750	8.86	225	28.66	728
250-15	IC40	18	153 A5	7.0-15	250-15	75D-74 / 95D-74	190-15 reinforced	10.43	265	30.12	765	9.06	230	29.02	737
300-15	IC12	22	165 A5	8.0-15	300-15	95D-74 / 95D-Z	190-15 reinforced	12.76	324	33.74	857	11.50	292	31.42	798
300-15	IC40	22	165 A5	8.0-15	300-15	95D-74 / 95D-Z	190-15 reinforced	12.72	323	33.74	857	11.69	297	32.24	819
355/65-15	IC12	24	170 A5	9.75-15	300-15 / 355/65-15	95D-74 / 95D-Z	240-15 reinforced	14.65	372	33.90	861	13.35	339	31.57	802
355/65-15	IC40	24	170 A5	9.75-15	300-15 / 355/65-15	95D-74 / 95D-Z	240-15 reinforced	14.69	373	33.90	861	13.15	334	33.07	840
20"															
10.00-20	IC40	18	166 A5	7.5-20	10.00-20F	127D-Z	190-20 reinforced	11.81	300	43.19	1,097	10.94	278	42.32	1,075
12.00-20	IC40	20	176 A5	8.5-20	11.00/12.00-20	127D-Z	230-20 reinforced	13.39	340	46.02	1,169	12.95	329	45.55	1,157

Actual Value				Inflation Pressure		Tire Load Capacity (ETRTO)													
						Other Vehicles at Max. Speed										Fork Lift Trucks Max. 16 mph 25 km/h			
Static Radius (+/-1%)		Tread Depth		bar	PSI	Stationary		6 mph 10 km/h		16 mph 25 km/h		25 mph 40 km/h		31 mph 50 km/h		Load Wheel		Steering Wheel	
inch	mm	1/32	mm			lbs	kg	lbs	kg	lbs	kg	lbs	kg	lbs	kg	lbs	kg	lbs	kg
10.31	262	13	10.6	10	145	5,997	2,720	5,159	2,340	3,968	1,800	3,527	1,600	3,329	1,510	5,159	2,340	3,968	1,800
10.79	274	30	23.5	10	145	5,997	2,720	5,159	2,340	3,968	1,800	3,527	1,600	-	-	5,159	2,340	3,968	1,800
11.02	280	15	12	8	116	6,856	3,110	5,908	2,680	4,542	2,060	4,045	1,835	3,814	1,730	5,908	2,680	4,542	2,060
10.24	260	14	11.1	7	102	7,055	3,200	6,074	2,755	4,674	2,120	4,156	1,885	3,924	1,780	6,074	2,755	4,674	2,120
10.24	260	14	11.1	10	145	8,818	4,000	7,595	3,445	5,842	2,650	5,223	2,369	-	-	7,308	3,315	5,401	2,450
10.55	268	n.a.	n.a.	10	145	8,818	4,000	7,595	3,445	5,842	2,650	5,223	2,369	-	-	7,308	3,315	5,401	2,450
11.89	302	14	11.5	9	131	7,055	3,200	6,074	2,755	4,674	2,120	4,156	1,885	3,924	1,780	6,074	2,755	4,674	2,120
11.89	302	14	11.5	10	145	7,452	3,380	6,415	2,910	4,938	2,240	4,398	1,995	4,145	1,880	6,415	2,910	4,938	2,240
12.32	313	28	22.5	9	131	7,055	3,200	6,074	2,755	4,674	2,120	4,156	1,885	-	-	6,074	2,755	4,674	2,120
12.32	313	28	22.5	10	145	7,452	3,380	6,415	2,910	4,938	2,240	4,398	1,995	-	-	6,415	2,910	4,938	2,240
12.01	305	15	12.2	7	102	9,072	4,115	7,815	3,545	6,008	2,725	5,346	2,425	5,049	2,290	7,815	3,545	6,008	2,725
12.01	305	15	12.2	10	145	11,817	5,360	10,174	4,615	7,826	3,550	6,967	3,160	-	-	10,174	4,615	7,826	3,550
11.73	298	18	14.6	7	102	9,072	4,115	7,815	3,545	6,008	2,725	5,346	2,425	5,049	2,290	7,815	3,545	6,008	2,725
12.56	319	31	24.3	7	102	9,072	4,115	7,815	3,545	6,008	2,725	5,346	2,425	-	-	7,815	3,545	6,008	2,725
12.56	319	31	24.3	10	145	11,817	5,360	10,174	4,615	7,826	3,550	6,967	3,160	-	-	10,174	4,615	7,826	3,550
13.23	336	15	12.3	8.25	120	7,859	3,565	6,768	3,070	5,203	2,360	4,630	2,100	4,365	1,980	6,768	3,070	5,203	2,360
13.74	349	17	13.2	10	145	9,987	4,530	8,598	3,900	6,614	3,000	5,886	2,670	5,556	2,520	8,598	3,900	6,614	3,000
14.29	363	30	23.5	9.25	134	9,326	4,230	8,025	3,640	6,173	2,800	5,490	2,490	-	-	8,025	3,640	6,173	2,800
14.72	374	18	14.3	10	145	12,147	5,510	10,461	4,745	8,047	3,650	7,165	3,250	6,757	3,065	10,461	4,745	8,047	3,650
15.35	390	36	28.5	10	145	12,147	5,510	10,461	4,745	8,047	3,650	7,165	3,250	-	-	10,461	4,745	8,047	3,650
12.56	319	13	10.7	9	131	9,656	4,380	8,311	3,770	6,393	2,900	5,688	2,580	5,368	2,435	8,311	3,770	6,393	2,900
13.15	334	26	20.5	10	145	9,656	4,380	8,598	3,900	6,614	3,000	5,886	2,670	-	-	8,598	3,900	6,614	3,000
13.23	336	18	14	9.5	138	12,147	5,510	10,461	4,745	8,047	3,650	7,165	3,250	6,757	3,065	10,461	4,745	8,047	3,650
13.66	347	27	21.5	9.5	138	12,147	5,510	10,461	4,745	8,047	3,650	7,165	3,250	-	-	10,461	4,745	8,047	3,650
14.06	357	18	14.5	10	145	17,141	7,775	14,760	6,695	11,354	5,150	10,108	4,585	9,535	4,325	14,760	6,695	11,354	5,150
14.25	362	33	26.5	10	145	17,141	7,775	14,760	6,695	11,354	5,150	10,108	4,585	-	-	14,760	6,695	11,354	5,150
14.25	362	22	17.5	10	145	19,974	9,060	17,196	7,800	13,228	6,000	11,773	5,340	11,111	5,040	17,196	7,800	13,228	6,000
15.28	388	36	28.2	10	145	19,974	9,060	17,196	7,800	13,228	6,000	11,773	5,340	-	-	17,196	7,800	13,228	6,000
19.80	503	38	30	10	145	17,637	8,000	15,190	6,890	11,684	5,300	10,406	4,720	-	-	15,190	6,890	11,684	5,300
20.83	529	43	34	10	145	23,634	10,720	20,349	9,230	15,653	7,100	13,933	6,320	-	-	20,349	9,230	15,653	7,100

Don't get under pressure. ContiPressureCheck™.

Air is free. So why let under-inflated tires cost you money putting drivers and loads at risk.

ContiPressureCheck continuously monitors tire pressure to optimize tire life and performance while maximizing MPG and Safety.

Want to know more? Call us today for free cost benefit analysis. ContiPressureCheck: It's just good business.



Don't get under pressure.

ContiPressureCheck™

Continental Pressure Check

Article	Article Description
ContiPressure Check	
17340630000	Kit: TRUCK./BUS with add. Receiver + 6 sensors
17340320000	Kit: 2 Tire sensors
17340520000	Set Handheld Tool
17340190000	Mounting tool (tire sensor)
17340200000	Special-glue 2250
17340040000	Tire sensor container (boot)
17340660000	Kit 5: COACH - (8 Sensors + Add. receiver)
17340640000	New Kit: TRAILER (fully equipped)
Spare Parts	
17340110000	Display
17340220000	Insert - Mounting Tool
17340600000	Set Central control unit Truck/Bus
17340240000	Diagnosis cable (hand held tool)
17340160000	Harness F+G
17340530000	Charger (handheld tool)
17340170000	Sub-harness H
17340030000	Bracket (central control unit)
17340670000	Sub-harness D large
17340090000	Sub-harness D
17340060000	Sub-harness C
17340130000	Pressure Check Indicator
17340080000	Sub-harness A
17340070000	Sub-harness B
17340590000	Repl. Fuse Diag cable
17340120000	Display holder
17340020000	Bracket (additional receiver)
17340180000	Connector Kit A+B+C
17340360000	Fuse Kit F
17340540000	USB cable (handheld tool)
17340550000	Impact protection (add. receiver)
17340210000	Spatula
17340610000	Set Central control unit Trailer
17340560000	Set Additional receiver (sparepart)

Product
InformationSuper Elastic
Resilient

Press on Bands

Industrial
PneumaticsContiPressure
CheckMulti-Purpose
Tires (MPT)

Port Tires

LifeCycle™

Astrum Blue

Information

Continental MPT Tires

MPT 80/81 DOT Rated

- › Designed for mobility with high load on soft ground and mud
- › Excellent traction in snow without the use of chains

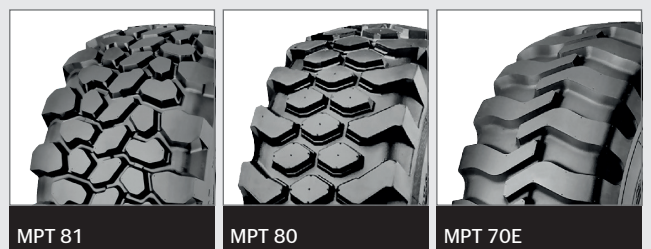


Continental MPT-Tires

Size	Description	Ply Rating	Weight (Lbs)	Article Number
Multi-Purpose Tires (MPT) - Radial				
16" Custom Rim				
315/55R16	MPT 81	8	64.7	0474035
18" Custom Rim (MPT)				
325/70R18	MPT 70 E	8	91.5	0474044
365/70R18		8	107.6	0474050
20" Custom Rim (MPT)				
10.5R20	MPT 80	10	80.9	0574140
		14	80.9	0574142
275/80R20 (10.5R20)	MPT 81	14	84.6	0574005
		12	104.8	0574155
			22	114.8
335/80R20 (12.5R20)	MPT 70 E	16	119.9	0574209
		22	113.4	0574192
14.5R20	MPT 80	18	137.5	0574186
		22	137.5	0574188
365/80R20 (14.5R20)	MPT 81 LR-G	20	154.8	0574195
		MPT 70 E	22	151.3
405/16/70R20	MPT 70 E	16	147.4	0574215
24" Custom Rim (MPT)				
455/70R24	MPT 70 E	14	198.8	0574225

* Ply ratings for MPT 81 and MPT 70E tires are estimates of ply rating equivalences.

Product Overview MPT



MPT tires are tubeless, if not marked otherwise.

Product Information

Super Elastic Resilient

Press on Bands

Industrial Pneumatics

ContiPressure Check

Multi-Purpose Tires (MPT)

Port Tires

LifeCycle™

Astrum Blue

Information

Technical Data – MPT

Tire	PR	LI/Speed	Tread	Rim	TL-Valve	Tire Dimensions (mm) Maximum in Service												Tread Depth		kPa 200
						Standard Values (ETRTO)				Actual Values										
						Section Width		Overall Diameter		Section Width		Overall Diameter		Static Radius		Rolling Circumference		1/32	mm	bar 2,0
inch	mm	inch	mm	inch	mm	inch	mm	inch	mm	inch	mm	inch	mm							
MPT 80																				
10.5 R 20 TL	10	128 J	MPT 80	9 x 20	43 GS 16	11.18	284	38.11	968	10.43	265	37.40	950	17.48	444	112.80	2865	19	15	2183
	14	134 J			43 GS 16	11.18	284	38.11	968	10.43	265	37.40	950	17.48	444	112.80	2865	19	15	2183
12.5 R 20 TL	12	132 J	MPT 80	11 x 20 11-20 SDC	43 GS 16	13.39	340	41.57	1056	12.60	320	40.55	1030	18.90	480	122.83	3120	21	17	2910
	16	139 J	MPT 80		43 GS 16	13.39	340	41.57	1056	12.60	320	40.55	1030	18.90	480	122.83	3120	21	17	2910
	22	147 J	MPT 80		43 GS 16	13.39	340	41.57	1056	12.60	320	40.55	1030	18.90	480	122.83	3120	21	17	2910
14.5 R 20 TL	10	132 J	MPT 80	11 x 20 11-20 SDC	43 GS 16	14.69	373	43.82	1113	13.86	352	42.91	1090	19.80	503	129.33	3285	23	18	3186
	18	143 J			43 GS 16	14.69	373	43.82	1113	13.86	352	42.91	1090	19.80	503	129.33	3285	25	20	3186
	22	152 J			43 GS 16	14.69	373	43.82	1113	13.86	352	42.91	1090	19.80	503	129.33	3285	23	18	3186
MPT 81																				
315/55 R 16 TL	-	120 K (124 F)	MPT 81	10, 10 LB	43 GS 11.5	-	-	-	-	12.09	307	29.53	750	13.70	348	89.06	2262	21	17	1973
				11	43 GS 16	12.95	329	30.00	762	12.48	317	29.53	750	13.70	348	89.06	2262	0	0	1973
275/80 R 20 TL (10.5 R 20)	-	134 K	MPT 81	9,9 SDC W 9	43 GS 16	11.38	289	38.35	974	10.43	265	37.40	950	17.32	440	112.20	2850	19	15	2183
335/80 R 20 TL (12.5 R 20)	-	147 K	MPT 81	W10	43 GS 16	13.94	354	42.36	1076	12.20	310	40.63	1032	18.90	480	122.83	3120	21	17	2910
				11, 11 SDC W 11	43 GS 16	-	-	-	-	12.60	320	40.63	1032	18.90	480	122.83	3120	0	0	2910
365/80 R 20 TL (14.5 R 20)	-	152 K	MPT 81	11 11 SDC 12 SDC	43 GS 16	14.88	378	43.94	1116	14.37	365	42.87	1089	19.76	502	128.94	3275	25	20	3186
MPT 70 E																				
325/70 R 18 TL	-	125 E	MPT 70 E	9	43 GS 16	12.91	328	37.01	940	12.32	313	36.73	933	16.65	423	112.72	2863	28	22.5	2227
				11, 11 SDC	43 GS 16	13.78	350	37.01	940	13.11	333	36.73	933	16.65	423	112.72	2863	0	0	2227
365/70 R 18 TL	-	133 E	MPT 70 E	11 SDC	43 GS 16	15.75	400	39.37	1000	14.37	365	38.15	969	16.85	428	113.98	2895	28	22.5	2756
				12	43 GS 16	16.18	411	39.37	1000	14.76	375	38.15	969	16.85	428	113.98	2895	0	0	2756
335/80 R 20 TL	-	134 E	MPT 70 E	9	43 GS 16	13.54	344	42.36	1076	11.73	298	40.98	1041	18.90	480	122.83	3120	28	22.5	2822
				11	43 GS 16	14.41	366	42.36	1076	12.52	318	40.98	1041	18.90	480	122.83	3120	0	0	2822
365/80 R 20 TL	-	139 E	MPT 70 E	11, 11 SDC	43 GS 16	14.88	378	43.94	1116	14.88	378	43.94	1116	19.69	500	130.00	3302	31	25	3241
				12	43 GS 16	15.31	389	43.94	1116	14.88	378	43.94	1116	19.69	500	130.00	3302	0	0	3241
405/70 R 20 TL	-	141 E	MPT 70 E	12	43 GS 16	17.36	441	44.13	1121	16.77	426	41.81	1062	19.13	486	127.05	3227	31	25	3439
				13, 13 SDC	43 GS 16	17.80	452	44.13	1121	16.77	426	41.81	1062	19.13	486	127.05	3227	0	0	3439
455/70 R 24	-	152 E	MPT 70 E	W 14 L	43 GS 16	-	-	-	-	17.13	435	48.15	1223	21.26	540	142.52	3620	35	28	4156
				W 15 L	43 GS 16	-	-	-	-	17.56	446	48.15	1223	21.26	540	142.52	3620	0	0	4156

Load Capacity (kg) per Tire For Single Tire Fitment (ETRTO)

kPa 200	kPa 250		kPa 300		kPa 350		kPa 375		kPa 400		kPa 425		kPa 450		kPa 500		kPa 525		kPa 600		kPa 650	
	bar 2.0 PSI 29	bar 2.5 PSI 36.25	bar 3 PSI 43.5	bar 3.5 PSI 50.75	bar 3.75 PSI 54.375	bar 4 PSI 58	bar 4.25 PSI 61.625	bar 4.5 PSI 65.25	bar 5 PSI 72.5	bar 5.25 PSI 76.125	bar 6 PSI 87	bar 6.5 PSI 94.25	kg	lbs	kg	lbs	kg	lbs	kg	lbs	kg	lbs
990	2612	1185	3020	1370	3417	1550	3605	1635	3781	1715	3968	1800	-	-	-	-	-	-	-	-	-	-
990	2612	1185	3020	1370	3417	1550	3605	1635	3781	1715	3968	1800	4134	1875	4475	2030	4674	2120	-	-	-	-
1320	3472	1575	3968	1800	4409	2000	-	-	-	-	-	-	-	-	-	-	-	-	-	-	-	-
1320	3472	1575	3968	1800	4409	2000	4674	2120	4938	2240	5148	2335	5357	2430	-	-	-	-	-	-	-	-
1320	3472	1575	3968	1800	4409	2000	4674	2120	4938	2240	5148	2335	5357	2430	5787	2625	5975	2710	6559	2975	6779	3075
1445	3814	1730	4409	2000	-	-	-	-	-	-	-	-	-	-	-	-	-	-	-	-	-	-
1445	3814	1730	4409	2000	5049	2290	5357	2430	5677	2575	5842	2650	6008	2725	-	-	-	-	-	-	-	-
1445	3814	1730	4409	2000	5049	2290	5357	2430	5677	2575	5842	2650	6008	2725	6614	3000	6889	3125	7826	3550	-	-
895	2359	1070	2734	1240	3086	1400	-	-	-	-	-	-	-	-	-	-	-	-	-	-	-	-
895	2359	1070	2734	1240	3086	1400	-	-	-	-	-	-	-	-	-	-	-	-	-	-	-	-
990	2612	1185	3020	1370	3417	1550	3605	1635	3781	1715	3968	1800	4134	1875	4475	2030	4674	2120	-	-	-	-
1320	3472	1575	3968	1800	4409	2000	4674	2120	4938	2240	5148	2335	5357	2430	5787	2625	5975	2710	6559	2975	6779	3075
1320	3472	1575	3968	1800	4409	2000	4674	2120	4938	2240	5148	2335	5357	2430	5787	2625	5975	2710	6559	2975	6779	3075
1445	3814	1730	4409	2000	5049	2290	5357	2430	5677	2575	5842	2650	6008	2725	6614	3000	6889	3125	7826	3550	-	-
1010	2646	1200	3042	1380	3439	1560	3638	1650	-	-	-	-	-	-	-	-	-	-	-	-	-	-
1010	2646	1200	3042	1380	3439	1560	3638	1650	-	-	-	-	-	-	-	-	-	-	-	-	-	-
1250	3285	1490	3792	1720	4299	1950	4542	2060	-	-	-	-	-	-	-	-	-	-	-	-	-	-
1250	3285	1490	3792	1720	4299	1950	4542	2060	-	-	-	-	-	-	-	-	-	-	-	-	-	-
1280	3373	1530	3902	1770	4420	2005	4674	2120	-	-	-	-	-	-	-	-	-	-	-	-	-	-
1280	3373	1530	3902	1770	4420	2005	4674	2120	-	-	-	-	-	-	-	-	-	-	-	-	-	-
1470	3902	1770	4475	2030	5071	2300	5357	2430	-	-	-	-	-	-	-	-	-	-	-	-	-	-
1470	3902	1770	4475	2030	5071	2300	5357	2430	-	-	-	-	-	-	-	-	-	-	-	-	-	-
1560	4101	1860	4740	2150	4938	2240	5677	2575	-	-	-	-	-	-	-	-	-	-	-	-	-	-
1560	4101	1860	4740	2150	4938	2240	5677	2575	-	-	-	-	-	-	-	-	-	-	-	-	-	-
1885	5192	2355	6261	2840	7275	3300	7826	3550	-	-	-	-	-	-	-	-	-	-	-	-	-	-
1885	5192	2355	6261	2840	7275	3300	7826	3550	-	-	-	-	-	-	-	-	-	-	-	-	-	-



Continental Port Tires

Safety or efficiency.
Don't compromise.

Up to four V.ply outer layers

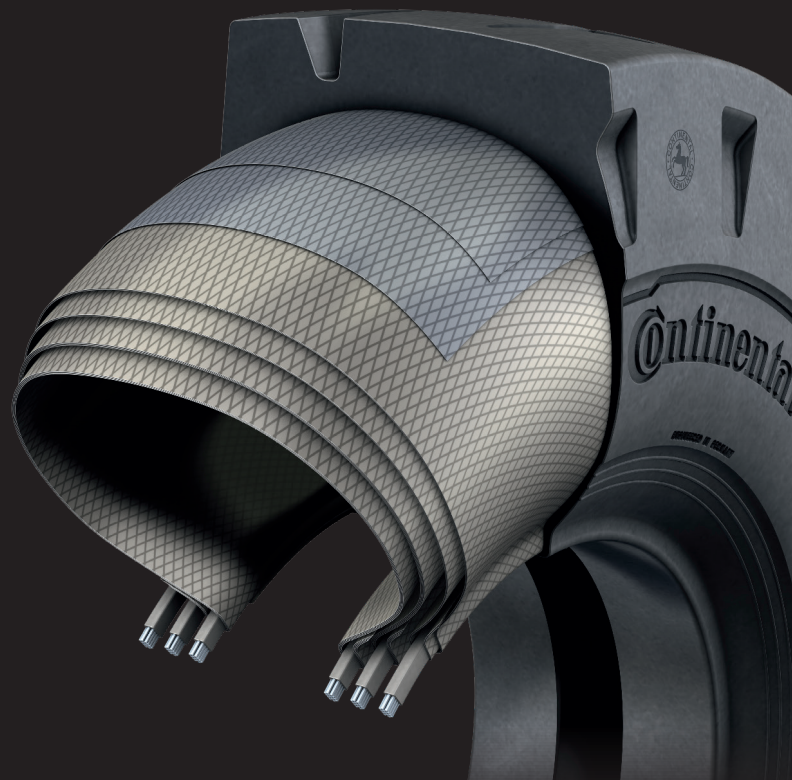
- › Increased structural strength in profile area
- › Provides an excellent connection between the outer rubber sheath and the inner polymer-carcase

Up to 20 layers V.ply

- › Vply layers are arranged in a specially designed angle to create a unique carcass design and function
- › Allows low internal friction which reduces rolling resistance and fuel consumption

Reinforced side walls

- › Reduces side wall deflection and creates high damping
- › Excellent stability

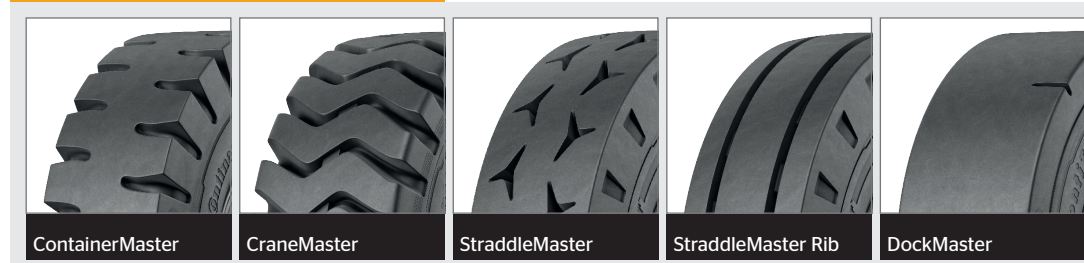


Continental Port Tires

Size	Rim Type	Ply	Code	Profile	Weight (Lbs)	Article Number
EM tires for industrial vehicles Cross-Ply / Material Handling						
24" Custom Rim						
14.00-24	TL	28	E4	ContainerMaster	395.2	1215137
				CraneMaster	318.11	1215142
			E3	DockMaster	427.4	1215166
12.00-24 (Please order Tube & Flap)	TT	20	E4	ContainerMaster	274.0	1215135
Tube Airfix				S 12.00-24 F 140D-Z AIRFIX	10.7	0582034
Flap				B 220-24 M AIRFIX	6.0	0590007
14.00-24 (Please order Tube & Flap)	TL	28	E4	ContainerMaster	381.6	1215136
				E3	Cranemaster	306.8
			Tube Airfix	S13.00/14.00-24 F 140D-64 AIRF	14.1	0582037
Flap	B 220-24 M AIRFIX	6.0	0590007			
25" Custom Rim						
16.00-25	TL	32	E4	ContainerMaster	587.92	1215138
			E3	CraneMaster	526.2	1215143
			E4	StraddleMaster Rib	595.7	1215156
			E4	StraddleMaster	595.7	1215151
18.00-25	TL	40	E3	ContainerMaster	876.83	1215139
				E4	CraneMaster	645.27
			E4	DockMaster	949.57	1215141
21.00-25	TL	40	E3	CraneMaster	897.67	1215145
				StraddleMaster	915.2	1215159
33" Custom Rim						
18.00-33	TL	40	E4	ContainerMaster	1104.24	1215140
			E3	StraddleMaster	1102.31	1215154
35" Custom Rim						
21.00-35	TL	40	E3	CraneMaster	1191.11	1215149

TT = Tube Type
 TL = Tubeless

Product Overview - OTR



TL = Tubeless / TT = Type-Type

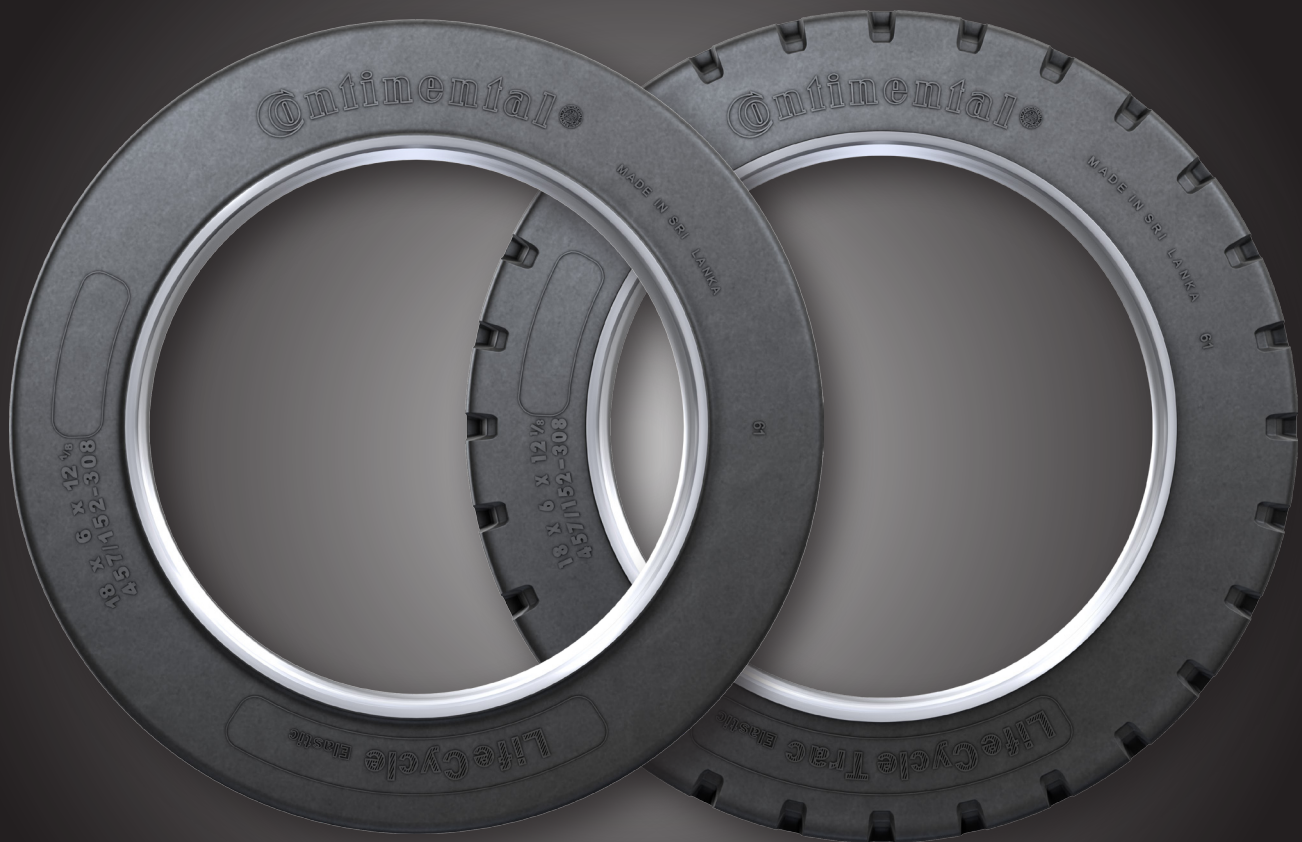
Product Information
 Super Elastic Resilient
 Press on Bands
 Industrial Pneumatics
 ContiPressure Check
 Multi-Purpose Tires (MPT)
 Port Tires
 LifeCycle™
 Astrum Blue
 Information

Technical Data – Port Tires

Tire									
Size	Tread	PR	LI/Speed	Tread Rate	Rim	TT / TL	Tube	Flap	Valve
24' Custom Rim									
12.00-24	ContainerMaster	20	178	E4	24x8.50V	TT	12.00-24TB	11.00/12.00R25	TR78A
14.00-24	ContainerMaster	28	193	E4	24 x 10.00/1.5	TL	Tubeless	Tubeless	Tubeless
	ContainerMaster	28	193	E4	24 x 10.00/1.5	TT	14.00-24.25TB	13.00/14.00-24.25	TR179A
	CraneMaster	28	188	E3	24 x 10.00/1.5	TL	Tubeless	Tubeless	Tubeless
25" Custom Rim									
16.00-25	ContainerMaster	32	196	E4	25x11.25/2.0	TL	Tubeless	Tubeless	Tubeless
16.00-25	CraneMaster	32	196	E3	25x11.25/2.0	TL	Tubeless	Tubeless	Tubeless
16.00-25	StraddleMaster Rib	32	200	E4	25x11.25/2.0	TL	Tubeless	Tubeless	Tubeless
16.00-25	StaddleMaster	32	200	E4	25x11.25/2.0	TL	Tubeless	Tubeless	Tubeless
18.00-25	ContainerMaster	40	207	E4	25x13.00/2.5	TL	Tubeless	Tubeless	Tubeless
18.00-25	CraneMaster	40	207	E3	25x13.00/2.5	TL	Tubeless	Tubeless	Tubeless
18.00-25	DockMaster	40	207	E4	25x13.00/2.5	TL	Tubeless	Tubeless	Tubeless
21.00-25	CraneMaster	40	213	E3	25x15.00/3.0	TL	Tubeless	Tubeless	Tubeless
33" Custom Rim									
18.00-33	ContainerMaster	40	214	E4	33x13.00/2.5	TL	Tubeless	Tubeless	Tubeless
35" Custom Rim									
21.00-35	CraneMaster	40	219	E3	35x15.00/3.0	TL	Tubeless	Tubeless	Tubeless

Tire Dimensions (mm) Maximum in Service																			
Outside Diameter		SW Width		Tread Width		Edge Diameter		Static Radius		Static Load Width		Tread Depth		Dual Spacing		Ref. Load		Rated Pressure	
inch	mm	inch	mm	inch	mm	inch	mm	inch	mm	inch	mm	1/32	mm	inch	m	lbs	kg	PSI	bar
50.75	1,289	13.07	332	10.98	279	49.41	1,255	23.56	599	-	-	45	35.5	-	-	16,535	7,500	145	10
55.31	1,405	15.55	395	12.28	312	54.02	1,372	25.00	635	17.05	433	59	47	17.72	450	25,353	11,500	145	10
55.31	1,405	15.55	395	12.28	312	54.02	1,372	25	635	17.05	433	59	47	17.72	450	25,353	11,500	145	10
53.39	1,356	15.00	381	12.95	329	51.46	1,307	-	-	-	-	37	29	17.72	450	22,046	10,000	145	10
60.94	1,548	17.95	456	15.35	390	59.72	1,517	27.28	693	19.17	487	70	55.5	20.39	518	27,558	12,500	145	10
58.46	1,485	17.32	440	-	-	-	-	26.02	661	-	-	45	35.5	20.39	518	27,558	12,500	145	10
60.63	1,540	18.19	462	14.96	380	-	-	-	-	-	-	68	54	-	-	33,069	15,000	145	10
60.63	1,540	18.19	462	14.96	380	-	-	-	-	-	-	68	54	-	-	33,069	15,000	145	10
66.69	1,694	20.28	515	17.28	439	-	-	29.84	758	-	-	81	64.5	23.54	598	38,581	17,500	145	10
64.57	1,640	20.20	513	17.09	434	-	-	28.39	721	-	-	47	37.5	23.54	598	38,581	17,500	145	10
66.06	1,678	20.35	517	-	-	-	-	30.95	786	-	-	74	59	23.54	598	38,581	17,500	145	10
69.49	1,765	23.74	603	20.12	511	66.14	1,680	31.18	792	25.51	648	54	43	26.89	683	46,297	21,000	145	10
74.02	1,880	20.67	525	17.44	443	72.83	1,850	34.25	870	-	-	82	65	23.54	598	46,738	21,200	145	10
79.25	2,013	22.64	575	-	-	-	-	-	-	-	-	52	41	27.60	701	53,572	24,300	145	10

Saving now goes green.

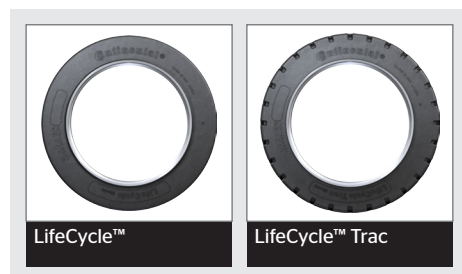


Continental LifeCycle™

The Continental LifeCycle™ excels in all areas. Its efficient method of production helps reduce demand for raw materials and preserve the environment, whilst offering unbeatable value for money - yet without compromising the outstanding quality you have come to expect from Continental tires.

LifeCycle™

Size	Description	Type	Weight (lbs.)	Article Number
LifeCycle™ - 6-1/2 - 12.125"				
6-1/2" Custom Rim				
EL 10 x 5 x 6-1/2	LifeCycle	STB	15.4	1300260
8" Custom Rim				
EL 13-1/2 x 5-1/2 x 8	LifeCycle Trac	STB	27.6	1300266
	LifeCycle	STB	27.8	1300287
EL 14 x 4-1/2 x 8	LifeCycle	STB	24.6	1300257
	LifeCycle Trac	STB	24.7	1300267
10.5" Custom Rim				
EL 16 x 5 x 10-1/2	LifeCycle	STB	31.9	1300258
	LifeCycle Trac	STB	31.5	1300268
EL 16 x 6 x 10-1/2	LifeCycle	STB	38.4	1300292
	LifeCycle Trac	STB	38.6	1300269
11.25" Custom Rim				
EL 15 x 5 x 11-1/4	LifeCycle	STB	26.2	1300255
	LifeCycle Trac	STB	26.2	1300270
EL 16-1/4 x 5 x 11-1/4	LifeCycle	STB	38.4	1300288
	LifeCycle Trac	STB	38.4	1300271
EL 16-1/4 x 6 x 11-1/4	LifeCycle	STB	31.5	1300261
	LifeCycle Trac	STB	38.4	1300272
EL 16-1/4 x 7 x 11-1/4	LifeCycle	STB	43.9	1300289
	LifeCycle Trac	STB	43.9	1300273
12.125" Custom Rim				
EL 18 x 5 x 12-1/8	LifeCycle	STB	37.2	1300290
	LifeCycle Trac	STB	37.3	1300274
EL 18 x 6 x 12-1/8	LifeCycle	STB	45.0	1300259
	LifeCycle Trac	STB	45.4	1300275
EL 18 x 7 x 12-1/8	LifeCycle	STB	54.2	1300291
	LifeCycle Trac	STB	54.2	1300276



Product Information

Super Elastic Resilient

Press on Bands

Industrial Pneumatics

ContiPressure Check

Multi-Purpose Tires (MPT)

Port Tires

LifeCycle™

Astrum Blue

Information

Size	Description	Type	Weight (lbs.)	Article Number
LifeCycle™ - 12-1/4" - 22"				
12.125" Custom Rim				
EL 18 x 8 x 12-1/8	LifeCycle Trac	STB	64.8	1300277
	LifeCycle Trac	STB	68.8	1300278
15" Custom Rim				
EL 21 x 7 x 15	LifeCycle	STB	64.4	1300253
	LifeCycle Trac	STB	66.1	1300280
EL 21 x 8 x 15	LifeCycle	STB	73.6	1300263
	LifeCycle Trac	STB	73.6	1300281
16" Custom Rim				
EL 22 x 8 x 16	LifeCycle	STB	82.9	1300254
	LifeCycle Trac	STB	83.8	1300282
EL 22 x 9 x 16	LifeCycle	STB	95.9	1300262
	LifeCycle Trac	STB	90.0	1300283
EL 22 x 12 x 16	LifeCycle Trac	STB	125.7	1300285
22" Custom Rim				
EL 28 x 12 x 22	LifeCycle Trac	STB	165.1	1300286

Wheel Type



Technical Data – LifeCycle™

Size Designation		Dimensions						Other Vehicles at		
		Actual Value						max. 6 km/h	max. 6 km/h	Max. 10
		Overall Diameter [inch]	Overall Diameter [mm +/- 1%]	Overall Width [inch]	Overall Width [mm +/- 1%]	Tread Width [inch]	Tread Width [mm +/- 1%]	lbs	kg	lbs
Metrical	Imperial									
8" Custom Rim										
10X5X6 1/2	254/127-165	9.92	252	5.00	127	3.74	95	2,227	1,010	1,830
13 1/2X5 1/2X8	343/140-203	13.46	342	5.51	140	4.17	106	3,318	1,505	2,723
13 1/2X5 1/2X8	343/140-203	13.46	342	5.51	140	4.17	106	3,318	1,505	2,723
14X4 1/2X8	356/114-203	13.98	355	4.49	114	3.31	84	2,579	1,170	2,116
14X4 1/2X8	356/114-203	13.98	355	4.49	114	3.31	84	2,579	1,170	2,116
10-1/2" Custom Rim										
16X5X10 1/2	406/127-267	15.91	404	5.00	127	3.66	93	3,329	1,510	2,734
16X5X10 1/2	406/127-267	15.91	404	5.00	127	3.66	93	3,329	1,510	2,734
16X6X10 1/2	406/152-267	15.91	404	5.98	152	4.65	118	4,222	1,915	3,461
16X6X10 1/2	406/152-267	15.91	404	5.98	152	4.65	118	4,222	1,915	3,461
11-1/4" Custom Rim										
15X5X11 1/4	381/127-286	14.84	377	5.00	127	3.78	96	3,064	1,390	2,524
15X5X11 1/4	381/127-286	14.84	377	5.00	127	3.78	96	3,064	1,390	2,524
16 1/4X5X11 1/4	413/127-286	16.14	410	5.00	127	3.94	100	3,362	1,525	2,756
16 1/4X5X11 1/4	413/127-286	16.14	410	5.00	127	3.94	100	3,362	1,525	2,756
16 1/4X6X11 1/4	413/152-286	16.14	410	5.98	152	4.61	117	4,233	1,920	3,472
16 1/4X6X11 1/4	413/152-286	16.14	410	5.98	152	4.61	117	4,233	1,920	3,472
16 1/4X7X11 1/4	413/178-286	16.14	410	7.01	178	5.43	138	5,104	2,315	4,189
16 1/4X7X11 1/4	413/178-286	16.14	410	7.01	178	5.43	138	5,104	2,315	4,189
12-1/8" Custom Rim										
18X5X12 1/8	457/127-308	17.91	455	4.96	126	3.86	98	3,627	1,645	2,976
18X5X12 1/8	457/127-308	17.91	455	4.96	126	3.86	98	3,627	1,645	2,976
18X6X12 1/8	457/152-308	17.87	454	5.98	152	4.53	115	4,619	2,095	3,792
18X6X12 1/8	457/152-308	17.87	454	5.98	152	4.53	115	4,619	2,095	3,792
18X7X12 1/8	457/178-308	17.87	454	7.01	178	5.39	137	5,622	2,550	4,619
18X7X12 1/8	457/178-308	17.87	454	7.01	178	5.39	137	5,622	2,550	4,619
18X8X12 1/8	457/203-308	17.87	454	7.99	203	6.54	166	6,625	3,005	5,445
18X9X12 1/8	457/229-308	17.87	454	9.02	229	7.13	181	7,628	3,460	6,261
15" Custom Rim										
21X7X15	533/178-381	20.87	530	7.01	178	5.67	144	6,327	2,870	5,192
21X7X15	533/178-381	20.87	530	7.01	178	5.67	144	6,327	2,870	5,192
21X8X15	533/203-381	20.87	530	7.99	203	6.18	157	7,463	3,385	6,129
21X8X15	533/203-381	20.87	530	7.99	203	6.18	157	7,463	3,385	6,129

Load capacity [kg] to ETRTO, DIN 15160										
Maximum Speed			Fork Lift Trucks							
km/h	Max. 16 km/h		Max. 10 km/h				Max. 16 km/h			
			Load Wheel		Steer Wheel		Load Wheel		Steer Wheel	
kg	lbs	kg	lbs	kg	lbs	kg	lbs	kg	lbs	kg
830	1,676	760	2,227	1,010	1,830	830	1,995	905	1,676	760
1,235	2,491	1,130	3,318	1,505	2,723	1,235	2,965	1,345	2,491	1,130
1,235	2,491	1,130	3,318	1,505	2,723	1,235	2,965	1,345	2,491	1,130
960	1,929	875	2,579	1,170	2,116	960	2,304	1,045	1,929	875
960	1,929	875	2,579	1,170	2,116	960	2,304	1,045	1,929	875
1,240	2,491	1,130	3,329	1,510	2,734	1,240	2,965	1,345	2,491	1,130
1,240	2,491	1,130	3,329	1,510	2,734	1,240	2,965	1,345	2,491	1,130
1,570	3,164	1,435	4,222	1,915	3,461	1,570	3,770	1,710	3,164	1,435
1,570	3,164	1,435	4,222	1,915	3,461	1,570	3,770	1,710	3,164	1,435
1,145	2,304	1,045	3,064	1,390	2,524	1,145	2,734	1,240	2,304	1,045
1,145	2,304	1,045	3,064	1,390	2,524	1,145	2,734	1,240	2,304	1,045
1,250	2,524	1,145	3,362	1,525	2,756	1,250	2,998	1,360	2,524	1,145
1,250	2,524	1,145	3,362	1,525	2,756	1,250	2,998	1,360	2,524	1,145
1,575	3,175	1,440	4,233	1,920	3,472	1,575	3,781	1,715	3,175	1,440
1,575	3,175	1,440	4,233	1,920	3,472	1,575	3,781	1,715	3,175	1,440
1,900	3,825	1,735	5,104	2,315	4,189	1,900	4,553	2,065	3,825	1,735
1,900	3,825	1,735	5,104	2,315	4,189	1,900	4,553	2,065	3,825	1,735
1,350	2,712	1,230	3,627	1,645	2,976	1,350	3,230	1,465	2,712	1,230
1,350	2,712	1,230	3,627	1,645	2,976	1,350	3,230	1,465	2,712	1,230
1,720	3,472	1,575	4,619	2,095	3,792	1,720	4,123	1,870	3,472	1,575
1,720	3,472	1,575	4,619	2,095	3,792	1,720	4,123	1,870	3,472	1,575
2,095	4,222	1,915	5,622	2,550	4,619	2,095	5,027	2,280	4,222	1,915
2,095	4,222	1,915	5,622	2,550	4,619	2,095	5,027	2,280	4,222	1,915
2,470	4,971	2,255	6,625	3,005	5,445	2,470	5,919	2,685	4,971	2,255
2,840	5,721	2,595	7,628	3,460	6,261	2,840	6,812	3,090	5,721	2,595
2,355	4,740	2,150	6,327	2,870	5,192	2,355	5,644	2,560	4,740	2,150
2,355	4,740	2,150	6,327	2,870	5,192	2,355	5,644	2,560	4,740	2,150
2,780	5,589	2,535	7,463	3,385	6,129	2,780	6,658	3,020	5,589	2,535
2,780	5,589	2,535	7,463	3,385	6,129	2,780	6,658	3,020	5,589	2,535

Technical Data – LifeCycle™

Size Designation		Dimensions						Other Vehicles at		
		Actual Value						max. 6 km/h	max. 6 km/h	Max. 10
		Metrical	Imperial	Overall Diameter [inch]	Overall Diameter [mm +/- 1%]	Overall Width [inch]	Overall Width [mm +/- 1%]	Tread Width [inch]	Tread Width [mm +/- 1%]	lbs
16" Custom Rim										
22X8X16	559/203-406	21,65	550	7,99	203	6,10	155	7727	3505	6191
22X8X16	559/203-406	21,65	550	7,99	203	6,10	155	7727	3505	6349
22X9X16	559/229-406	21,85	555	15,98	406	7,28	185	8896	4035	7308
22X9X16	559/229-406	21,81	554	9,02	229	6,97	177	8896	4035	7308
22X12X16	559/305-406	21,85	555	12,01	305	9,53	242	12412	5630	10196
22" Custom Rim										
28X12X22	711/305-559	27,72	704	12,01	305	9,45	240	14859	6740	12214

Load capacity [kg] to ETRTO, DIN 15160										
Maximum Speed			Fork Lift Trucks							
km/h	Max. 16 km/h		Max. 10 km/h				Max. 16 km/h			
			Load Wheel		Steer Wheel		Load Wheel		Steer Wheel	
kg	lbs	kg	lbs	kg	lbs	kg	lbs	kg	lbs	kg
2808	5787	2625	7727	3505	6191	2808	6900	3130	5787	2625
2880	5787	2625	7727	3505	6349	2880	6900	3130	5787	2625
3315	6669	3025	8896	4035	7308	3315	7948	3605	6669	3025
3315	6669	3025	8896	4035	7308	3315	7948	3605	6669	3025
4625	9315	4225	12412	5630	10196	4625	11089	5030	9315	4225
5540	11133	5050	14859	6740	12214	5540	13272	6020	11133	5050

ASTRUM *blue*



AN ENVIRONMENTALLY-FRIENDLY SOLUTION FOR YOUR SOLID TIRE NEEDS

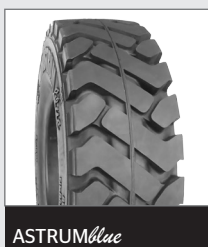
Astrum Blue solid tires provide the reliability of a new forklift tire with the cost savings of a green product. Recycled solid tire cores are remolded with abrasion resistant tread rubber and robust sidewalls to create a new super elastic solid tire! It is a viable solution for both your economic and environmental needs.

Astrum Blue solid tires offer all the benefits of a solid industrial tire in superelastic construction. Excellent for tough applications with a high risk of impact and cut damage.

Astrum*blue*

Size	Rim	Rim Type	Description	Weight (Lbs)	Article Number
Astrum Blue - 8"-12"					
8" Custom Rim					
125/75-8 (15x4 1/2-8)	3.00 D-8	S	Astrum	20.4	1335346
		SIT	Astrum	20.8	1335347
150/75-8 (16x6-8)	4.33 R-8	S	Astrum	32.3	1335350
		SIT	Astrum	32.9	1335351
5.00-8	3.00 R-8	S	Astrum	39.1	1335392
180/70-8 (18x7-8)	4.33 R-8	S	Astrum	43.4	1335354
		SIT	Astrum	43.7	1335355
9" Custom Rim					
6.00-9	4.00 E-9	S	Astrum	58.7	1335396
200/75-9 (21x8-9)	6.00 E-9	S	Astrum	76.7	1335360
		SIT	Astrum	77.2	1335361
10" Custom Rim					
200/50-10	6.50 F-10	SIT	Astrum	50.9	1335358
6.50-10	5.00 F-10	S	Astrum	77.9	1335400
225/75-10 (23x9-10)	6.50 F-10	SIT	Astrum	104.3	1335369
		S	Astrum	103.4	1335368
12" Custom Rim					
7.00-12	5.00 S-12	S	Astrum	103.4	1335404
250/60-12 (23x10-12)	8.00 G-12	S	Astrum	106.7	1335364
		SIT	Astrum	107.3	1335365
250/75-12 (27x10-12)	8.00 G-12	S	Astrum	154.2	1335376
		SIT	Astrum	154.4	1335377

Wheel Type



ASTRUM*blue*

Product Information

Super Elastic Resilient

Press on Bands

Industrial Pneumatics

ContiPressure Check

Multi-Purpose Tires (MPT)

Port Tires

LifeCycle™

Astrum Blue

Information

Size	Rim	Rim Type	Description	Weight (Lbs)	Article Number
Astrum Blue - 15"-20"					
15" Custom Rim					
7.00-15 (29x8-15)	5.5-15	S	Astrum	135.4	1335409
7.50-15	6.5-15	S	Astrum	157.5	1335412
8.25-15		S	Astrum	212.1	1335416
		SIT	Astrum	207.0	1335417
225/75-15 (28x9-15) (8.15-15)	7.0-15	S	Astrum	125.2	1335380
250/70-15 (250-15)		S	Astrum	150.8	1335372
		SIT	Astrum	151.9	1335373
315/70-15 (300-15)	8.00-15	S	Astrum	245.6	1335384
		SIT	Astrum	250.2	1335385
20" Custom Rim					
10.00-20	7.5-20	S	Astrum	378.1	1335204
10.00-20	8.0-20	S	Astrum	379.3	1335344

Wheel Type



ASTRUMblue

Technical Data – Astrum Blue

Material Number	Material Description	Size Designation		Dimensions				Stationary mm
		Metrical	Imperial	Actual Values				
				Overall Diameter [inch]	Overall Diameter [mm +/- 1%]	Overall Width [inch]	Overall Width [mm +/- 1%]	
8" Custom Rim								
13353880000	4.00-8/3.00 ASTRUM blue S	4.00-8		15.83	402	4.17	106	2,425
13353920000	5.00-8/3.00 ASTRUM blue S	5.00-8		17.87	454	4.84	123	3,627
13353460000	15X4 1/2-8/3.00 ASTRUM blue S	15X4 1/2-8	125/75-8	14.84	377	4.17	106	2,668
13353470000	15X4 1/2-8/3.00 ASTRUM blue C	15X4 1/2-8	125/75-8					
13353500000	16X6-8/4.33 ASTRUM blue S	16X6-8	150/75-8	15.90	404	5.63	143	3,726
13353510000	16X6-8/4.33 ASTRUM blue C	16X6-8	150/75-8					
13353540000	18X7-8/4.33 ASTRUM blue S	18X7-8	180/70-8	17.75	451	5.71	145	5,490
13353550000	18X7-8/4.33 ASTRUM blue C	18X7-8	180/70-8					
9" Custom Rim								
13353960000	6.00-9/4.00 ASTRUM blue S	6.00-9		20.47	520	5.67	144	4,828
13353600000	21X8-9/6.00 ASTRUM blue S	21X8-9	200/75-9	20.59	523	7.17	182	7,055
13353610000	21X8-9/6.00 ASTRUM blue C	21X8-9	200/75-9					
10" Custom Rim								
13354000000	6.50-10/5.00 ASTRUM blue S	6.50-10		22.64	575	6.18	157	5,997
13353580000	200/50-10/6.50 ASTRUM blue C		200/50-10	17.91	455	7.36	187	6,327
13353680000	23X9-10/6.50 ASTRUM blue S	23X9-10	225/75-10	22.63	575	8.19	208	8,818
13353690000	23X9-10/6.50 ASTRUM blue C	23X9-10	225/75-10					
12" Custom Rim								
13354040000	7.00-12/5.00 ASTRUM blue S	7.00-12		25.71	653	6.61	168	7,452
13353640000	23X10-12/8.00 ASTRUM blue S	23X10-12	250/60-12	23.14	588	8.98	228	9,656
13353650000	23X10-12/8.00 ASTRUM blue C	23X10-12	250/60-12					
13353760000	27X10-12/8.00 ASTRUM blue S	27X10-12	250/75-12	26.57	675	8.98	228	9,987
13353770000	27X10-12/8.00 ASTRUM blue C	27X10-12	250/75-12					
15" Custom Rim								
13354090000	7.00-15/5.50 ASTRUM blue S	7.00-15		28.54	725	7.36	187	9,072
13354120000	7.50-15/6.50 ASTRUM blue S	7.50-15		29.76	756	7.48	190	9,987
13353720000	250-15/7.00 ASTRUM blue S		250/70-15	28.34	720	8.66	220	12,147
13353730000	250-15/7.00 ASTRUM blue C		250/70-15					
13353800000	28X9-15/7.00 ASTRUM blue S	28X9-15	225/75-15	27.01	686	8.27	210	9,656
13353840000	300-15/8.00 ASTRUM blue S		315/70-15	32.32	821	9.72	247	14,980
13353850000	300-15/8.00 ASTRUM blue C		315/70-15					
13354160000	8.25-15/6.50 ASTRUM blue S	8.25-15		32.20	818	8.31	211	12,147
13354170000	8.25-15/6.50 ASTRUM blue C	8.25-15						
20" Custom Rim								
13352990000	10.00-20/7.50 ASTRUM blue S	10.00-20	290/95-20	40.15	1,020	10.16	258	16,645
13353440000	10.00-20/8.00 ASTRUM blue S	10.00-20	290/95-20					

Load capacity [kg] to ETRTO, DIN 15160										
Stationary	Other Vehicles at Maximum Speed						Fork Lift Trucks			
	4 mph	max. 6 km/h	6 mph	max. 10 km/h	16 mph	max. 25 km/h	Load Wheel		Steer Wheel	
lbs	lbs	kg	lbs	kg	lbs	kg	lbs	kg	lbs	kg
1,100	2,094	950	1,896	860	1,609	730	2,094	950	1,609	730
1,645	3,120	1,415	2,833	1,285	2,403	1,090	3,120	1,415	2,403	1,090
1,210	2,293	1,040	2,083	945	1,764	800	2,293	1,040	1,764	800
1,690	3,208	1,455	2,910	1,320	2,535	1,150	3,208	1,455	2,535	1,150
2,490	4,729	2,145	4,288	1,945	3,638	1,650	4,729	2,145	3,638	1,650
2,190	4,156	1,885	3,770	1,710	3,197	1,450	4,156	1,885	3,197	1,450
3,200	6,074	2,755	5,523	2,505	4,674	2,120	6,074	2,755	4,674	2,120
2,720	5,159	2,340	4,685	2,125	3,968	1,800	5,159	2,340	3,968	1,800
2,870	5,445	2,470	4,938	2,240	4,189	1,900	5,445	2,470	4,189	1,900
4,000	7,595	3,445	6,889	3,125	5,842	2,650	7,595	3,445	5,842	2,650
3,380	6,437	2,920	5,831	2,645	4,938	2,240	6,437	2,920	4,938	2,240
4,380	8,311	3,770	7,540	3,420	6,393	2,900	8,311	3,770	6,393	2,900
4,530	8,598	3,900	7,804	3,540	6,614	3,000	8,598	3,900	6,614	3,000
4,115	7,815	3,545	7,088	3,215	6,008	2,725	7,815	3,545	6,008	2,725
4,530	8,598	3,900	7,804	3,540	6,614	3,000	8,598	3,900	6,614	3,000
5,510	10,472	4,750	9,480	4,300	8,047	3,650	10,472	4,750	8,047	3,650
4,380	8,311	3,770	7,540	3,420	6,393	2,900	8,311	3,770	6,393	2,900
6,795	12,897	5,850	11,707	5,310	9,921	4,500	12,897	5,850	9,921	4,500
5,510	10,472	4,750	9,480	4,300	8,047	3,650	10,472	4,750	8,047	3,650
7,550	13,228	6,000	12,015	5,450	11,023	5,000	13,228	6,000	11,023	5,000

**CONTINENTAL TIRE THE AMERICAS LLC
DISTRIBUTOR LIMITED ADJUSTMENT POLICY
COMMERCIAL SPECIALTY TIRES**

CONTINENTAL WARRANTS TO ITS CUSTOMERS THAT ALL NEW PRODUCTS SOLD ARE FREE FROM ANY WORKMANSHIP OR MATERIAL DEFECTS. IF ANY TIRE IS DETERMINED TO BE DEFECTIVE BY AN AUTHORIZED REPRESENTATIVE OF CONTINENTAL WITHIN 48 MONTHS OR THE NORMAL USEFUL LIFE OF THE TIRE, CUSTOMER WILL RECEIVE PRO RATA CREDIT FOR REPLACEMENT BASED ON THE CURRENT BUYING PRICE EQUAL TO THE PERCENTAGE OF TREAD DEPTH REMAINING FOR THE SAME OR COMPARABLE REPLACEMENT CONTINENTAL BRAND TIRE AT THE TIME THE CLAIM IS PRESENTED.

THIS POLICY IS MADE FOR THE EXCLUSIVE BENEFIT OF THE ORIGINAL PURCHASER USING THE PRODUCT AND IS NOT ASSIGNABLE. NO CLAIM HEREUNDER WILL BE RECOGNIZED UNLESS SUBMITTED ON CONTINENTAL'S STANDARD CLAIM FORM ALONG WITH THE TIRE TO AN AUTHORIZED CONTINENTAL REPRESENTATIVE.

CONTINENTAL'S OBLIGATIONS UNDER THIS POLICY ARE IN LIEU OF ALL EXPRESSED OR IMPLIED WARRANTIES, INCLUDING BUT NOT LIMITED TO IMPLIED WARRANTIES OR MERCHANTABILITY AND FITNESS FOR A PARTICULAR USE OR PURPOSE AND ALL OTHER OBLIGATIONS ASSUMED BY ANY CONTINENTAL DISTRIBUTOR OR IMPOSED BY LAW.

COMMERCIAL SPECIALTY TIRES

1830 MacMillan Park Drive • Fort Mill, SC 29707
(p) 704-583-3900 (f) 704-587-6560

US Market Manager	Operations Manager	Marketing Sales & SAP Analyst
Matt Futrelle p: 919-601-7891 f: 704-583-8709 matthew.futrelle@conti-na.com	Rob Schroeder p: 704.583.8851 f: 704-587-6560 Rob.Schroeder@conti-na.com	Misty Henderson p: 704-583-8165 f: 704-587-6560 misty.henderson@conti-na.com
North Eastern Region	National Acct. Manager	South Eastern Region
Don Will p: 908-752-7721 f: 704-587-6560 donald02.will@conti-na.com	Jason Stickley p: 803-280-4466 f: 704-587-6560 jason.stickley@conti-na.com	John Estes p: 803-280-5426 f: 704-587-6560 john.estes@conti-na.com
Eastern Region District Sales Manager	Midwest Region	Western Region District Sales Manager
Ray Sanderbeck p: 501-772-4839 f: 704-587-6560 raymond.sanderbeck@conti-na.com	Phil Lannon p: 224-805-1144 f: 847-342-8921 phil.lannon@conti-na.com	Chris Bennett p: 214-585-3413 f: 704-587-6560 chris.bennett@conti-na.com
Rocky Mountain Region	Western Region	Southern CA
Nick Thompson p: 505-414-8499 f: 704-587-6560 nick.thompson@conti-na.com	Mark Madding p: 419-324-5456 f: 559-294-7310 mark.madding@conti-na.com	Maryalice Prescott p: 562-216-0333 f: 704-587-6560 maryalice.prescott@conti-na.com
Mid-Central Region	OE Sales	KAM OE Manager
Ernest Pasley p: 803-412-1956 f: 704-587-6560 ernest.pasley@conti-na.com	Dana Berger p: 703-583-3871 f: 704-587-6560 dana.berger@conti-na.com	Carly Shipley p: 704-247-0145 f: 704-587-6560 carly.shipley@conti-na.com
Marketing Coordinator		
Angel Olliver p: 704-583-8564 f: 704-587-6560 angel.olliver@conti-na.com		

COMMERCIAL SPECIALTY TIRES

6110 Cantay Road • Mississauga, Ontario L5R-3W5
(p) 905-856-4363 (f) 905-856-9808

Western Canada Sales Manager	Canada Market Manager	Eastern Canada Sales Manager
Craig Bowyer p: 604-318-0281: f: 604-422-0990 craig.bowyer@conti-na.com	Tim Hubbert p: 416-578-4833 f: 519-622-7589 tim.hubbert@conti-na.com	Roch Peladeau p: 514-206-6083 f: 514-453-6652 roch.peladeau@conti-na.com

Product Information

Super Elastic Resilient

Press on Bands

Industrial Pneumatics

ContiPressure Check

Multi-Purpose Tires (MPT)

Port Tires

LifeCycle™

Astrum Blue

Information

Continental Tire the Americas, LLC

1830 MacMillan Park Drive.

Fort Mill, SC 29707

Phone: 877-235-0102

Fax: 704-583-6560

<http://www.continental-specialty.com/specialty>



Scan code or visit

<http://www.continental-specialty.com/specialty>

for the most up to date
product information.

Inside Sales

877-235-0102